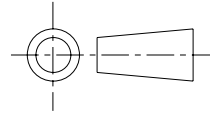


ISS.	DATE	E.C.N.	DESCRIPTION
2	21-Jan-08	01/07/1199	SCALLOP SIZE INCREASED
3	15-May-08	01/07/1199	3° DRAFT ADDED MATERIAL CHANGED TO LEXAN LS2

© 2006 CARCLO  
ALL DIMENSIONS IN mm



### CUSTOMER DRAWING



**CARCLO TECHNICAL PLASTICS (SLOUGH) LTD.**  
111 BUCKINGHAM AVE, SLOUGH  
SL1 4PF, ENGLAND  
TEL: +44 1753 575011 FAX: +44 1753 811359  
e-mail: design@ctpcoil.co.uk

#### GENERAL TOLERANCES (UNLESS STATED)

LINEAR	ANGULAR
X +/- 0.25	X +/- 1°
X.X +/- 0.1	X.X +/- 0.5°
X.XX +/- 0.05	X.XX +/- 0.1°

#### CUSTOMER

#### TITLE

LED OPTIC 4 X 25 DEG

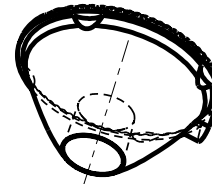
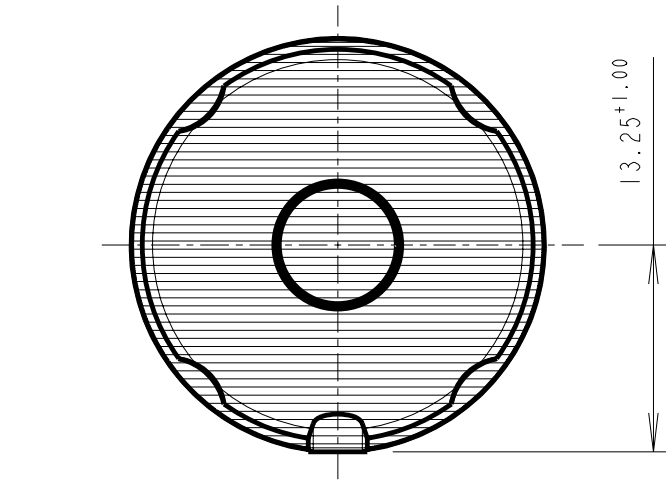
DRAWN **AJD** DATE **19-Feb-04**

CHK'D \_\_\_\_\_ DATE \_\_\_\_\_

APP'D \_\_\_\_\_ DATE \_\_\_\_\_

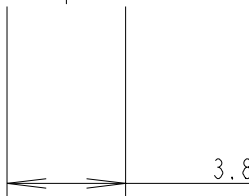
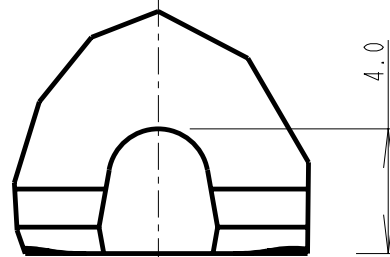
SCALE **2:1** COIL PART No. **10049**

SIZE **A4** COIL DRG. No. **60368** SHEET **2 OF 2**

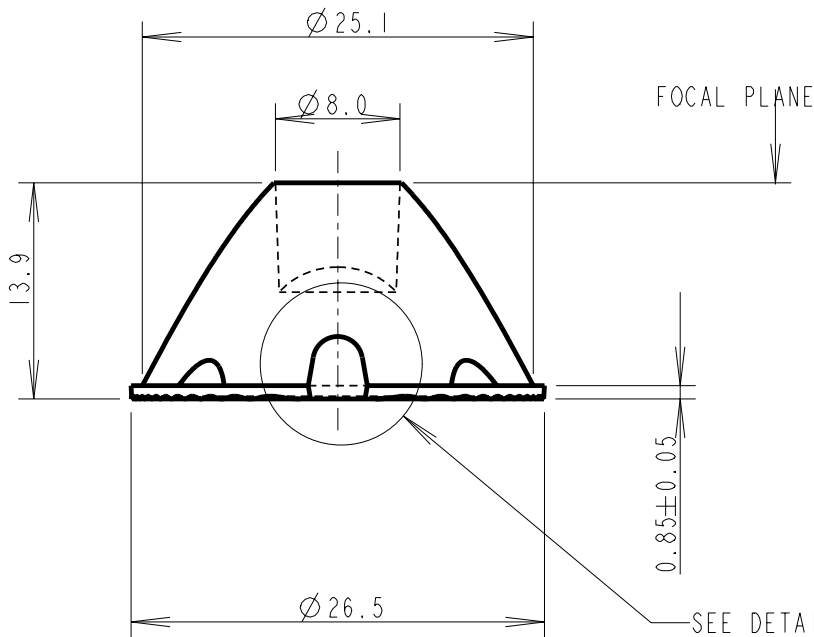


SCALE 1:1  
GENERAL VIEW

DETAIL A  
SCALE 4:1



MATERIAL: LEXAN LS2



SEE DETAIL A