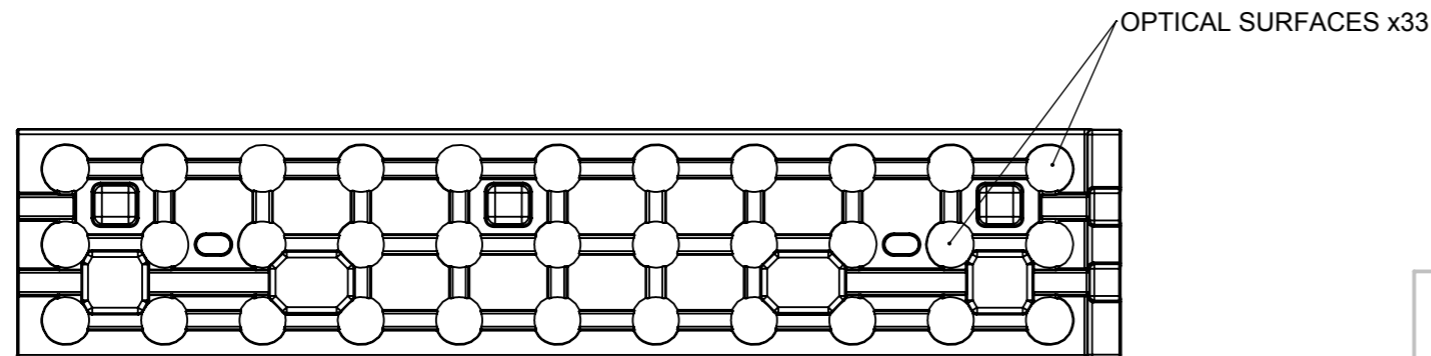
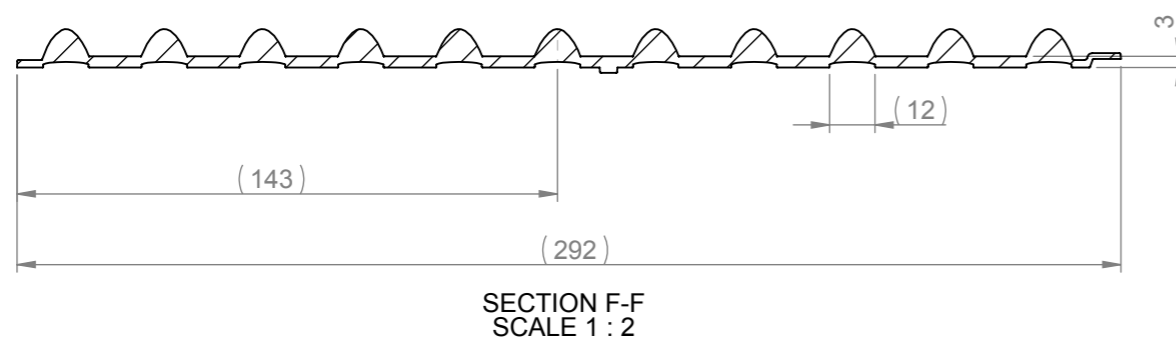
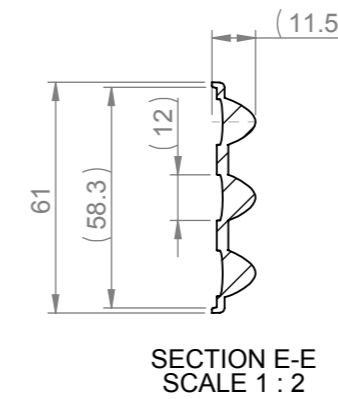
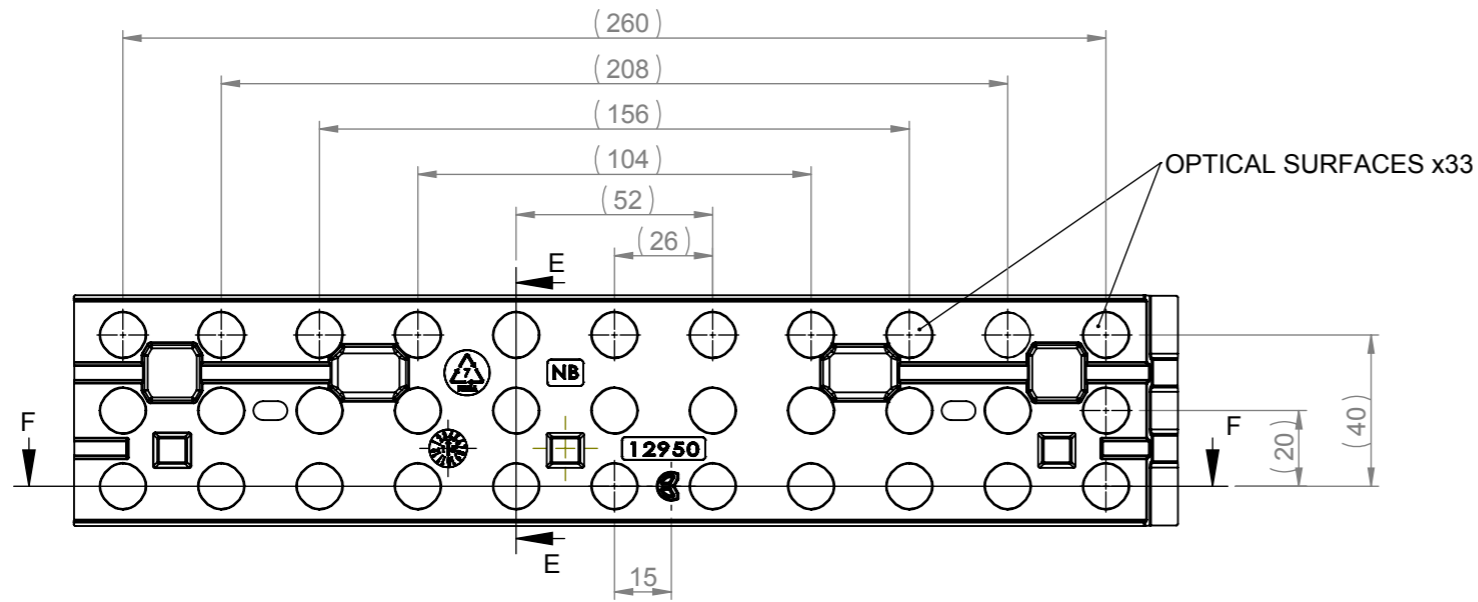


# CUSTOMER DRAWING

REV.	D.C.N No	DESCRIPTION	DATE
D1		INITIAL CONCEPT DESIGN. P. SUTTON	30/07/2015
1	1434	PRODUCTION RELEASE. PJS	10/09/2015
2	ECN1526	ADDITIONAL FUSEBOXES. P.SUTTON	07/02/2017



**NOTES:**

- 1 - MATERIAL: PMMA
- 2 - FINISH:  
OPTICAL SURFACES ARE OPTICALLY POLISHED TO SPI-A1
- 3 - OVERALL PART THICKNESS = SEE 3D FILE
- 4 - GENERAL DRAFT 2°
- 5 - GENERAL FILLET 0.25MM
- 6 - DIMENSIONS IN BRACKETS ARE FOR INFORMATION ONLY AND NOT FOR INSPECTION

SHEET 2 OF 2

<p>Unit 6-7 Faraday Road Rabans Lane Industrial Area, Aylesbury, HP19 8RY, UK. Tel: +44(0) 01753 575 011 sales@carclo-optics.com www.carclo-optics.com</p>		Title		MID POWER ARRAY NARROW BEAM ASYMMETRIC FLANGE	
THIRD ANGLE PROJECTION		TOLERANCE ACCORDING TO NORM: DIN 16742 Tol Group TG6		CARCLO Optics CONFIDENTIAL: UNAUTHORISED COPYING, DISCUSSION & DISTRIBUTION PROHIBITED	
Drawn by		B.Bercof		Customer	
Scale		1:2		DIMENSION IN mm	
Format Size		A3		CAD File	
Part N°		12950		RFQ N°	
		000297			