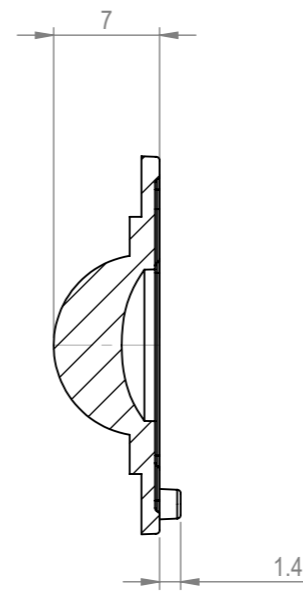
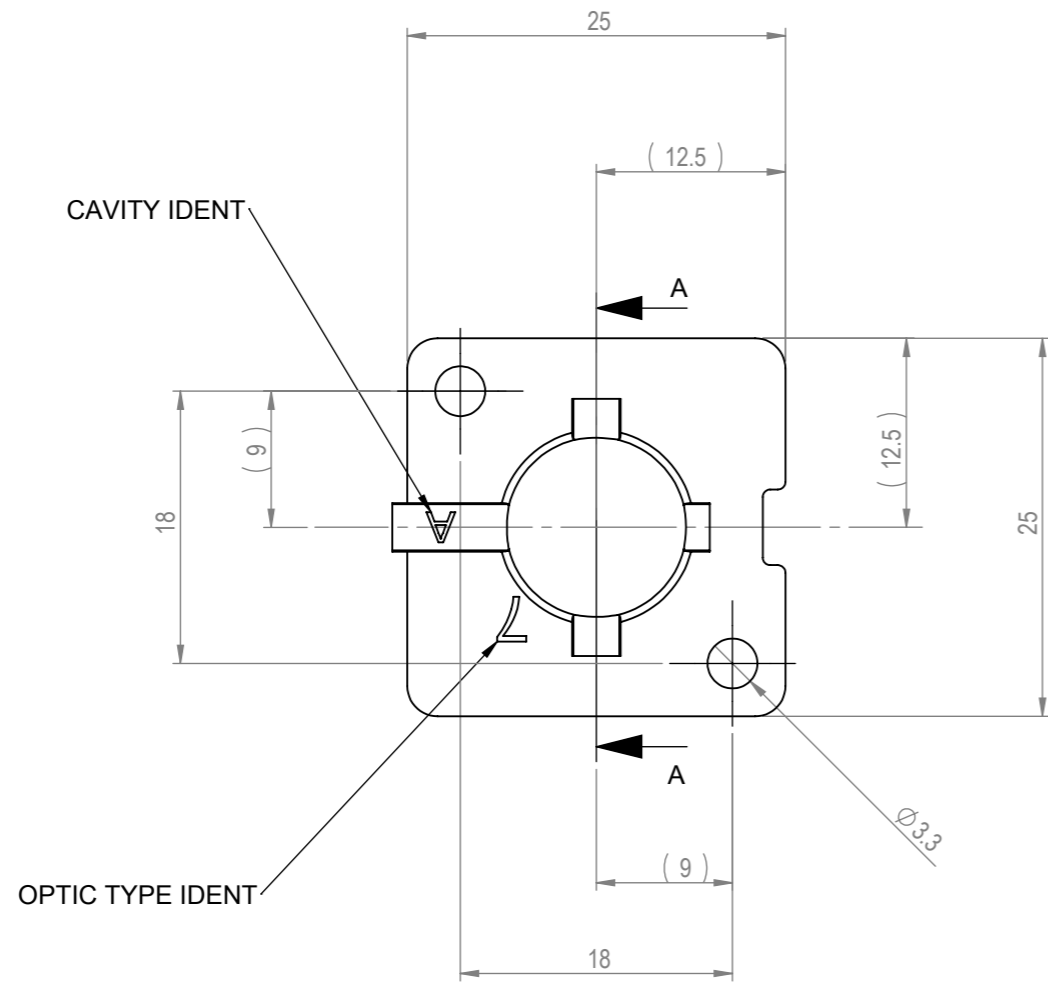
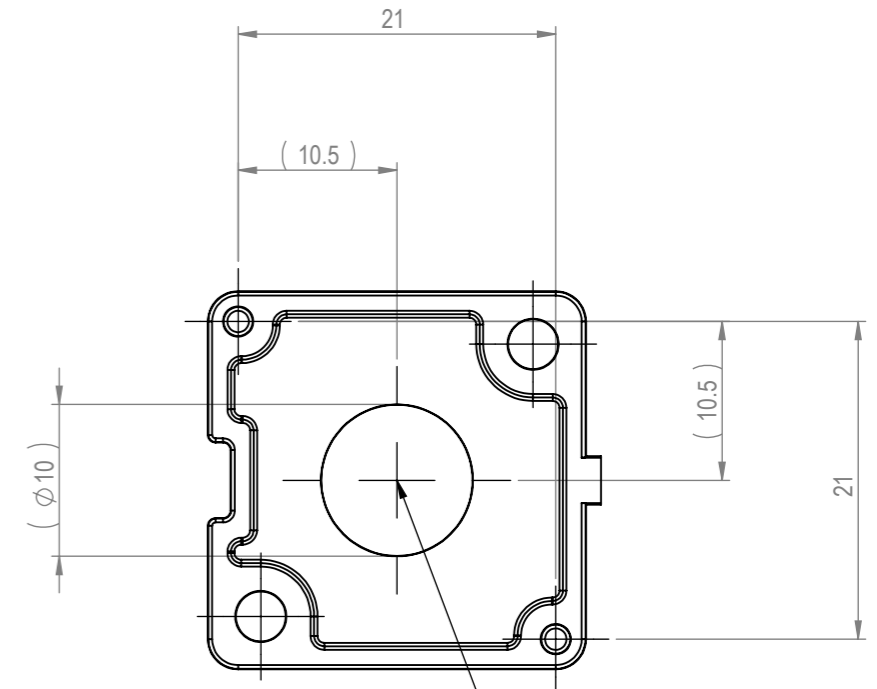


# CUSTOMER DRAWING

REVISIONS					
REV.	D.C.N NUMBER	DESCRIPTION	DATE	CHECKED BY DATE	APPROVED BY DATE
D1		FIRST ISSUE	26/02/2014	-	-
1	1390	FIRST PRODUCTION PART	11/12/2014	P.S 11/12/2014	B.B 11/12/2014
2	1442	OPTIC TYPE & CAVITY IDENTS ADDED. PJS	16/09/2015		



SECTION A-A



LED LOCATION

NOTES:

- 1 - MATERIAL: PMMA
- 2 - FINISH: OPTICAL SURFACES ARE OPTICALLY POLISHED TO SPI-A1 COMMERCIAL POLISH SP1-A3 FOR ALL NON OPTICAL SURFACES.
- 3 - OVERALL PART THICKNESS = SEE 3D FILE
- 4 - GENERAL DRAFT 2°
- 5 - GENERAL FILLET 0.25MM
- 6 - DIMENSIONS IN BRACKETS ARE FOR INFORMATION ONLY AND NOT FOR INSPECTION

SHEET 2 OF 2

		Title		MINI HUBBLE 7 WIDE BEAM SINGLE OPTIC					
		103 Buckingham Avenue SL1 4PF, UK. Tel: +44(0) 01753 575 011 Fax: +44(0) 01753 811 359 sales@carclo-optics.com www.carclo-optics.com		Drawn by	BB	Customer	CARCLO	Scale	AS SPEC
	GENERAL TOLERANCES UNLESS OTHERWISE STATED		CARCLO Optics		DIMENSION IN mm		Format Size		A3
	0	±0.25	0	±1°	CONFIDENTIAL: UNAUTHORISED COPYING, DISCUSSION & DISTRIBUTION PROHIBITED	CAD File	12815-70300_Rev-2		
0.0	±0.1	0.0	±0.5°	Part N°		12815	Drw N°	70300	
0.00	±0.05	0.00	±0.1°						