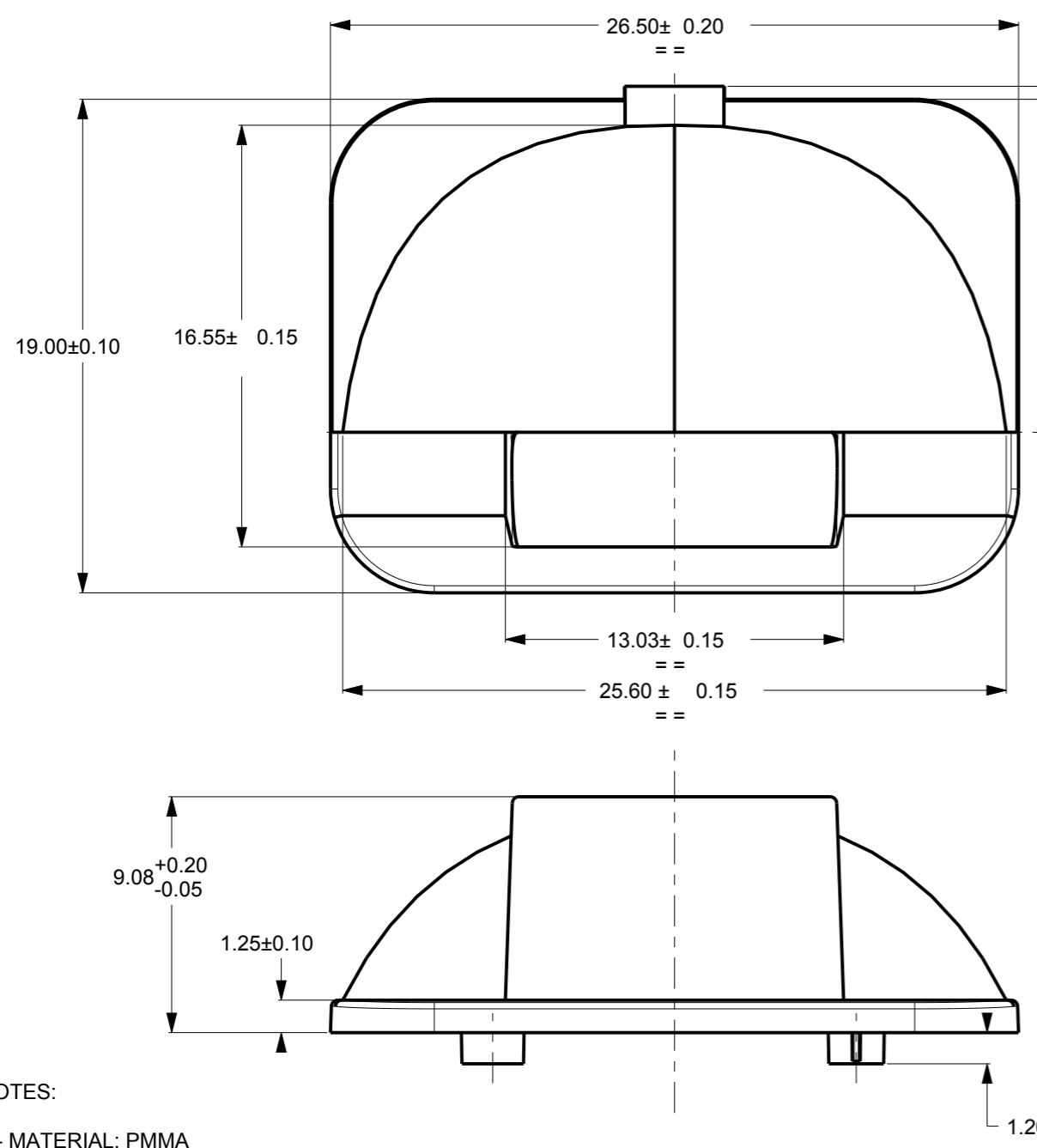
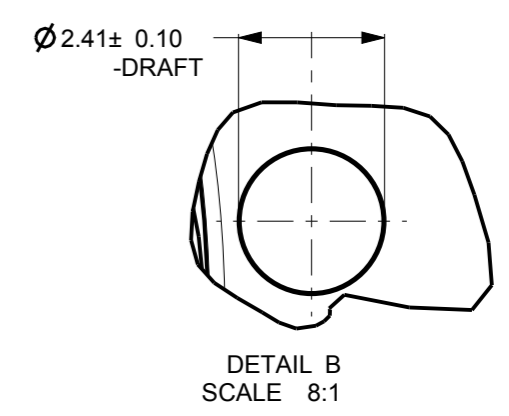
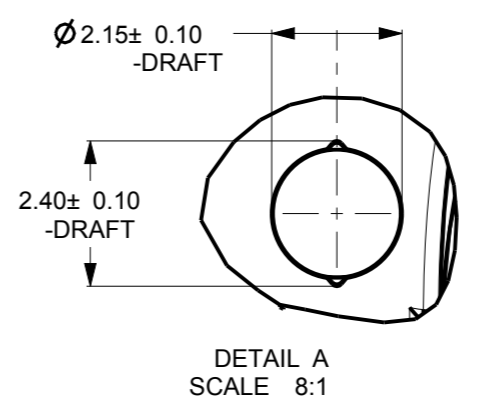
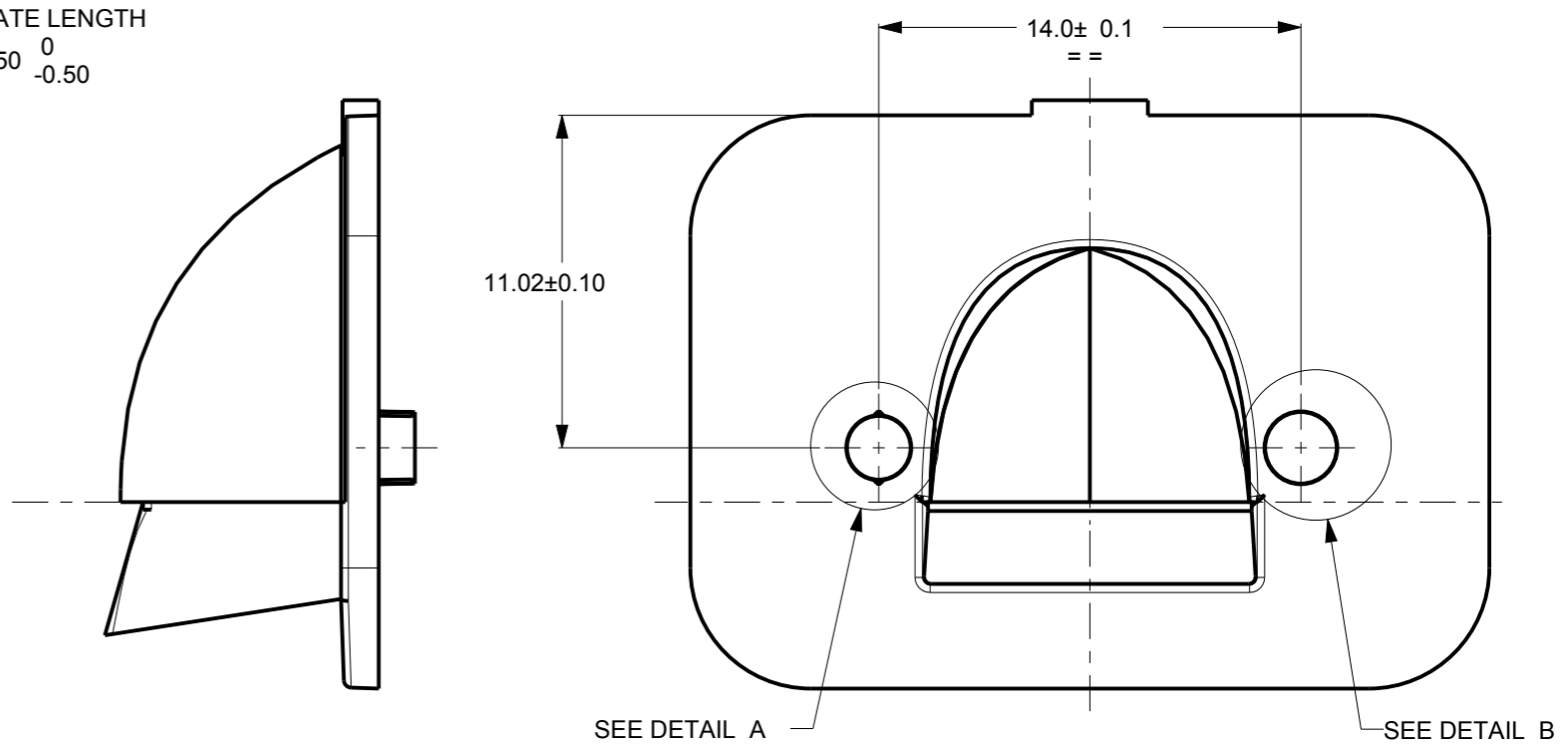


REV.	DATE	D.C.N. NUMBER	DESCRIPTION	CHECKED BY DATE	APPROVED BY DATE
1	12/06/12		FIRST ISSUE	MH 12/06/12	PW 12/06/12
2	17/09/12	08/12/1343	UPDATED TOLERANCES	MH 17/09/12	PW 17/09/12
2A	06/11/12	11/12/1353	OPTIC NAME UPDATED	MH 06/11/12	PW 06/11/12

CUSTOMER DRAWING SHEET 2 ONLY



GATE LENGTH
0.50
0
-0.50



- NOTES:
- 1 - MATERIAL: PMMA
 - 2 - COLOUR CLEAR
 - 3 - GENERAL DRAFT 1°
 - 4 - SIMPLIFIED GEOMETRY SHOWN.
NOT SUITABLE FOR OPTICAL RAYTRACING

<p>SCALE 4:1 technical plastics 103 BUCKINGHAM AVE, SLOUGH, BERKSHIRE, SL1 4PF, UK Tel: +44 1753 610800 Fax: +44 1753 811359 design@carclo-optics.com www.carclo-optics.com</p>	Title		HUBBLE 1 OPTIC			
	Customer		CARCLO			
Drawn by	FP	Material	SEE NOTE		Scale	AS SPEC.
THIRD ANGLE PROJECTION	GENERAL TOLERANCES UNLESS OTHERWISE STATED		DIMENSIONS IN mm		Format Size	
	LINEAR	ANGULAR	CAD File		A3	
	0 ± 0.25	0 ± 1°	89-12586-70084-FF-OPTIC			
	0.0 ± 0.1	0.0 ± 0.5°	Drw. N°		70084	
	0.00 ± 0.05	0.00 ± 0.1°	Part N°		12586	
			<p>CONFIDENTIAL: UNAUTHORISED COPYING, DISCUSSION & DISTRIBUTION PROHIBITED</p>			