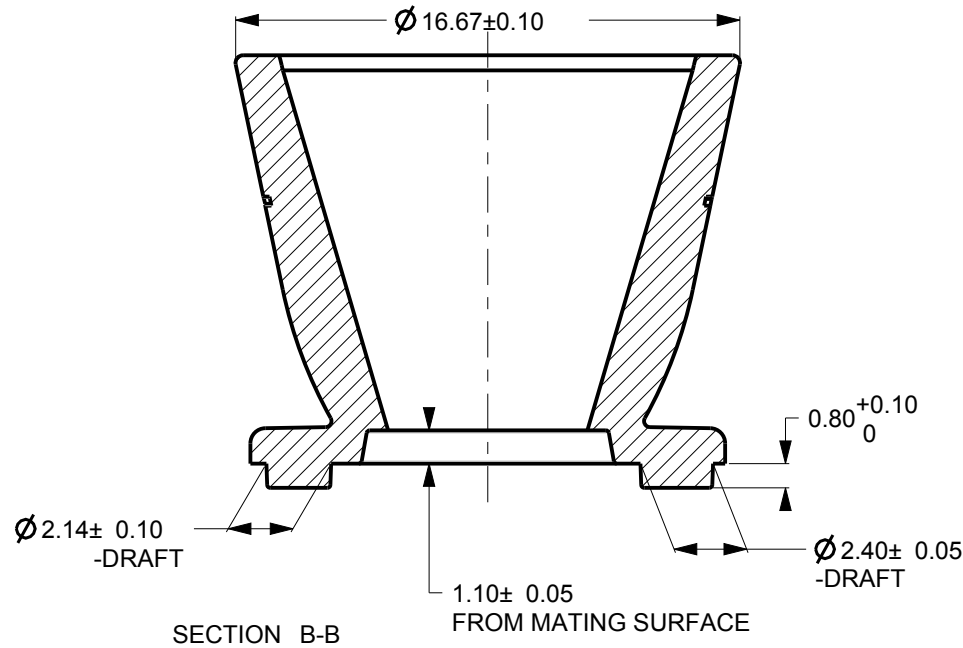
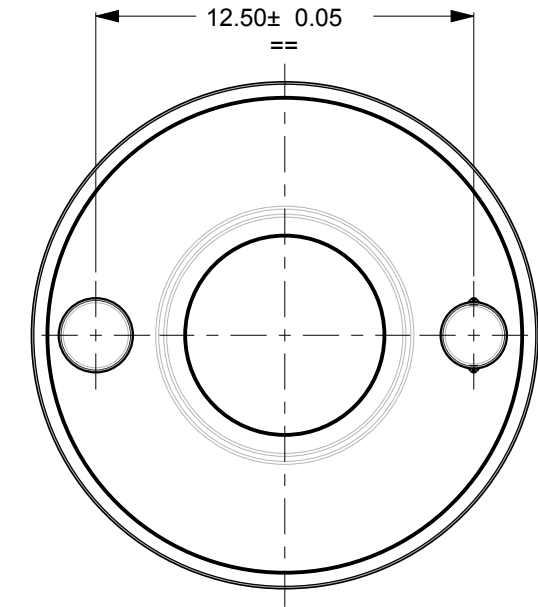
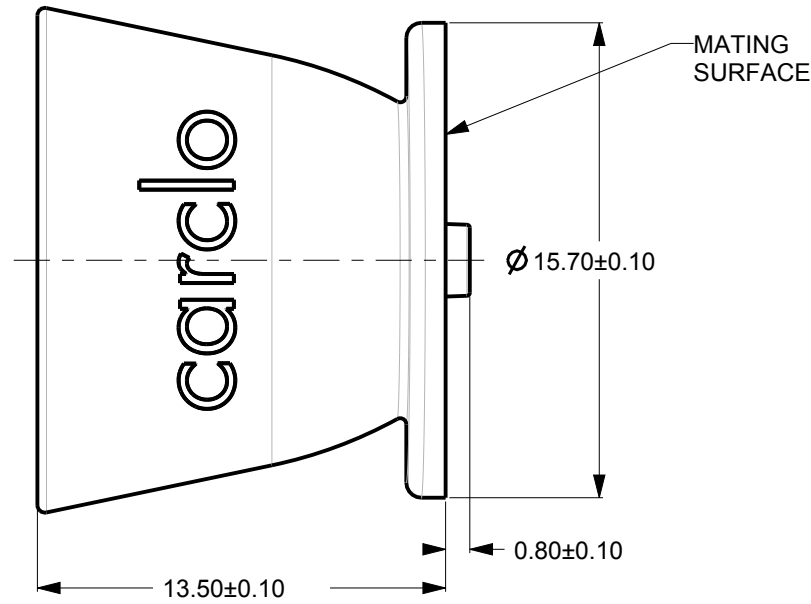
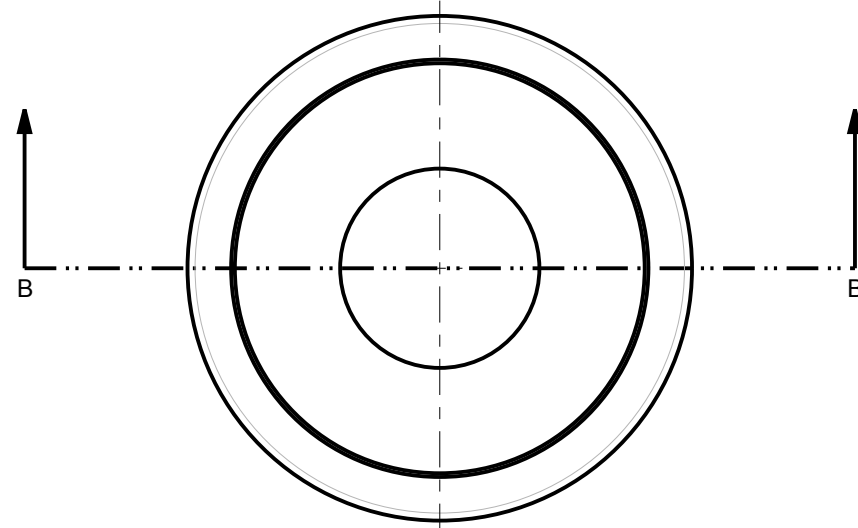




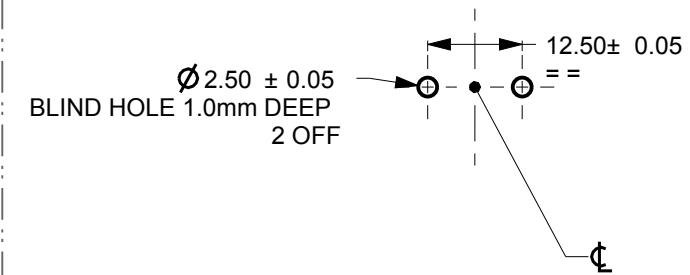
SCALE 1:1

CUSTOMER DRAWING SHEET 2 ONLY

REV.	DATE	D.C.N. NUMBER	DESCRIPTION	CHECKED BY DATE	APPROVED BY DATE
1	13/01/12		FIRST ISSUE	MH 13/01/12	MB 13/01/12
2	21/06/12	06/12/1337	CHANGED SURFACE TEXTURE FINISH FROM VDI 30-33 TO VDI 21-24	MH 25/06/12	MB 25/06/12
2A	15/08/12	07/12/1342	ADDED SUBSTRATE TABLE AND TIDIED UP DRAWING	MH 17/08/12	PW 17/08/12



PCB SAMPLE LAYOUT
STANDARD THICKNESS 1.5mm
DESIGNED FOR 1.6mm
TO INCLUDE COATING




NOTES:

- 1 - MATERIAL: POLYCARBONATE
- 2 - FINISH: COMMERCIAL POLISH FOR ALL NON OPTICAL SURFACES
- 3 - OVERALL PART THICKNESS = 1.4mm
- 4 - COLOUR = CARCLO GREY / ALUMINIUM COATED
- 5 - GENERAL DRAFT 1°
- 6 - SIMPLIFIED GEOMETRY SHOWN. NOT SUITABLE FOR OPTICAL RAYTRACE

SCALE 4:1

SCALE 1:1

Sheet 2 of 2

<div>carclo</div> <div>technical plastics</div> <div>103 BUCKINGHAM AVE, SLOUGH, BERKSHIRE, SL1 4PF, UK Tel: +44 1753 610800 Fax: +44 1753 811359 design@carclo-optics.com www.carclo-optics.com</div>		Title		ARCHIMEDES MEDIUM BEAM HIGHBAY REFLECTOR - GLUE							
		Customer		CARCLO							
		Drawn by		FP		Material		SEE NOTE		Scale	AS SPEC.
<div>THIRD ANGLE PROJECTION</div> <div></div>		<div>GENERAL TOLERANCES UNLESS OTHERWISE STATED</div> <div>LINEAR ANGULAR</div> <div><div><div>0 ± 0.25</div><div>0.0 ± 0.1</div><div>0.0 ± 0.05</div></div><div><div>0 ± 1 °</div><div>0.0 ± 0.5 °</div><div>0.0 ± 0.1 °</div></div></div>		<div>CARCLO technical plastics</div> <div>CONFIDENTIAL: UNAUTHORISED COPYING, DISCUSSION & DISTRIBUTION PROHIBITED</div>		DIMENSIONS IN mm		Format Size		A3	
						CAD File	72-12530-70029-REFL-60-GLUE				
						Drw. N°	70029	Part N°	12530		