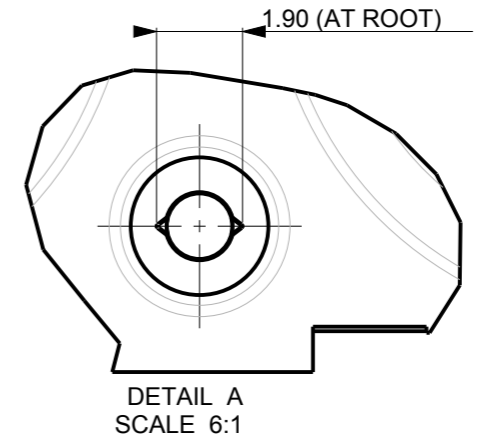
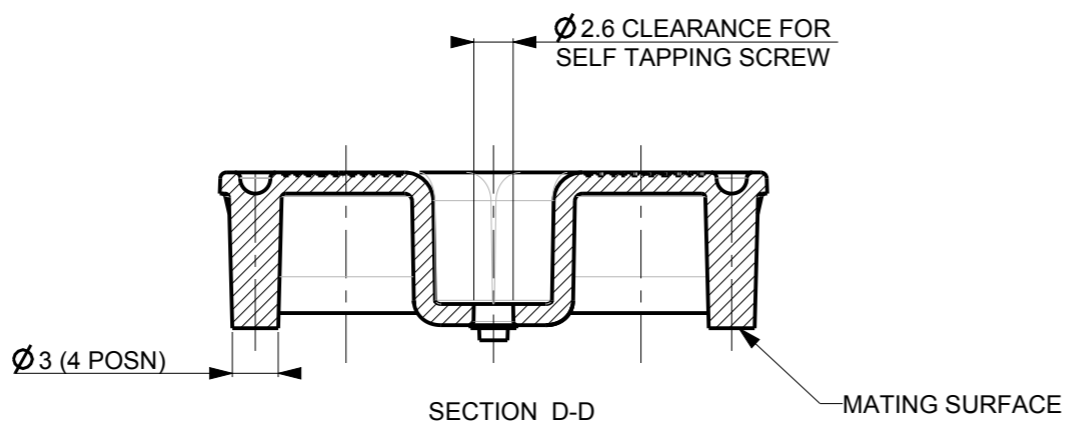
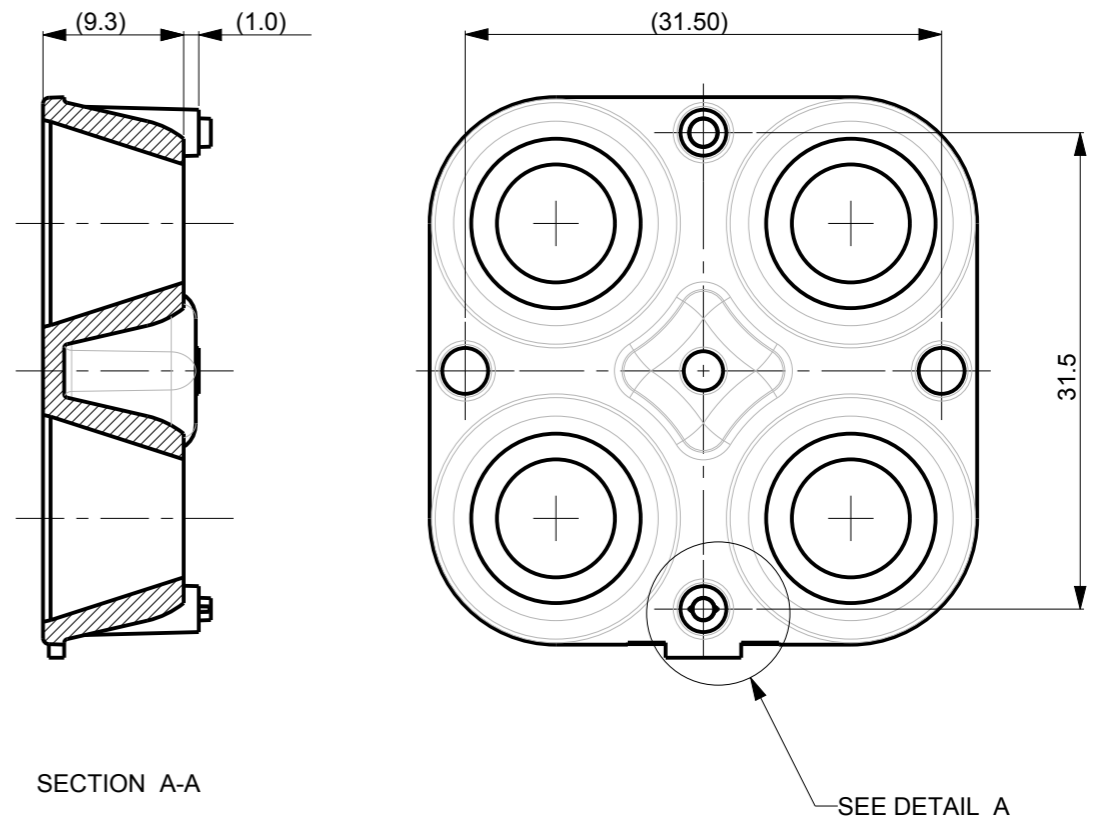
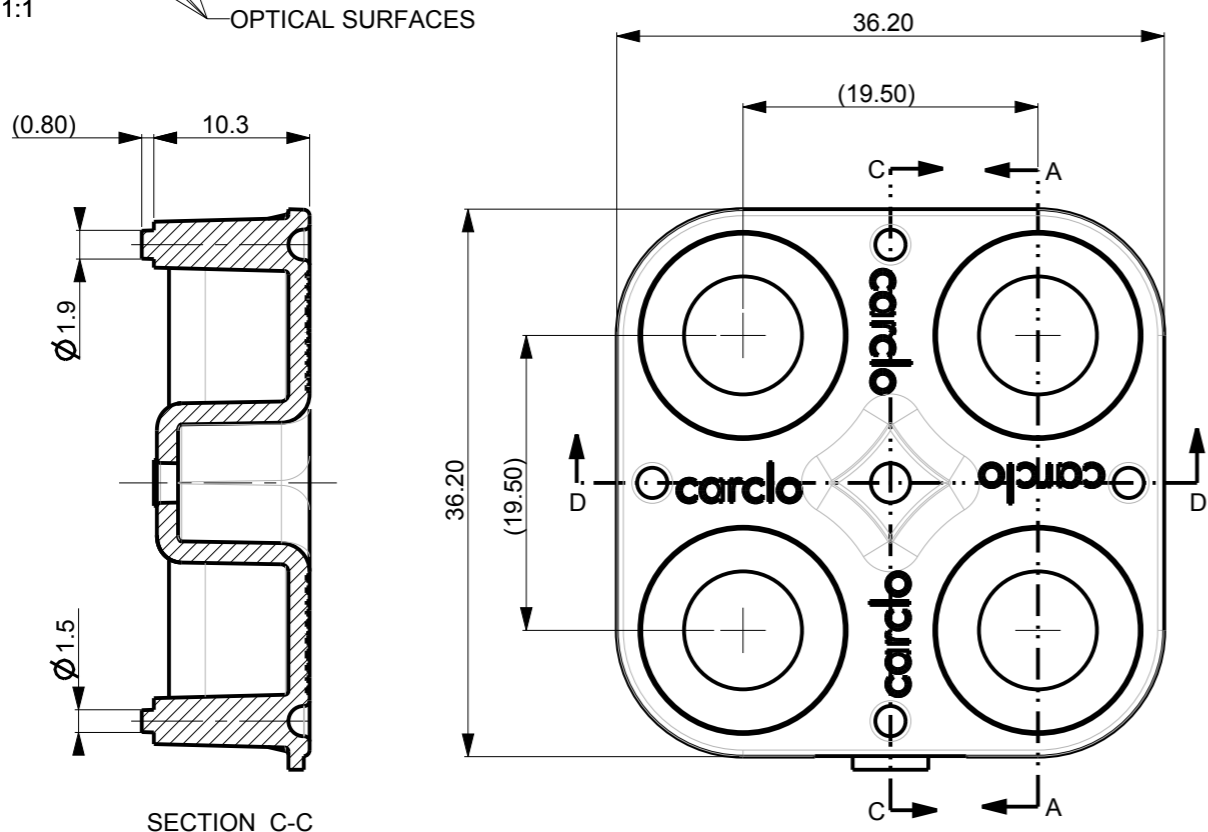
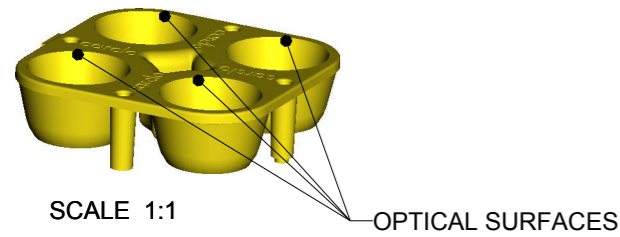


| REV. | DATE | D.C.N. NUMBER | DESCRIPTION |
|------|----------|---------------|---|
| 1 | 13/01/12 | | FIRST ISSUE |
| 1A | 14/07/12 | 07/12/1341 | ADDED SUBSTRATE TABLE AND TIDIED UP DRAWING |
| 1B | 28/10/15 | 1450 / 1458 | TOLERANCES TO DIN16742:TG5. REDIMENSIONED. ALT MATERIAL ADDED. P.SUTTON |



- NOTES:
- 1 - MATERIAL: POLYCARBONATE
 - 2 - FINISH: COMMERCIAL POLISH FOR ALL NON OPTICAL SURFACES
 - 3 - COLOUR = CARCLO GREY / ALUMINIUM COATED
 - 4 - GENERAL DRAFT 1°
 - 5 - SIMPLIFIED GEOMETRY SHOWN. NOT SUITABLE FOR OPTICAL RAYTRACE
 - 6 - DIMENSIONS IN BRACKETS ARE AUXILIARY DIMENSIONS AND NOT FOR INSPECTION PURPOSES.

CUSTOMER DRAWING Sheet 2 of 2

| | | | |
|---|--|---|--|
| 103 BUCKINGHAM AVE, SLOUGH, BERKSHIRE, SL1 4PF, UK Tel: +44 1753 610800 Fax: +44 1753 811359 design@carclo-optics.com www.carclo-optics.com | | Title ARCHIMEDES WIDE BEAM HIGHBAY REFLECTOR ARRAY WITH SCREW | |
| Customer CARCLO | | Drawn by FP | |
| Material SEE NOTE | | Scale AS SPEC. | |
| THIRD ANGLE PROJECTION | | DIMENSIONS IN mm Format Size A3 | |
| GENERAL TOLERANCES UNLESS OTHERWISE STATED DIN 16742:TG5 | | CAD File 12526_70025_REV-1B_ARCH_REFL_80 Drw. N° 70025 | |
| CARCLO Optics Ltd CONFIDENTIAL: UNAUTHORISED COPYING, DISCUSSION & DISTRIBUTION PROHIBITED | | Part N° 12526 | |