

ISS.	DATE	E.C.N.	DESCRIPTION
1	5-Mar-09		FIRST ISSUE
2	1-Apr-09	04/09/1243	Reverse draft added


 technical plastics
CARCLO TECHNICAL PLASTICS (SLOUGH) LTD.
 111 BUCKINGHAM AVE, SLOUGH
 SL1 4PF, ENGLAND
 TEL: +44 1753 575011 FAX: +44 1753 811359
 email: design@coil.co.uk

GENERAL TOLERANCES (UNLESS STATED)

LINEAR	ANGULAR
X +/- 0.25	X +/- 1°
X.X +/- 0.1	X.X +/- 0.5°
X.XX +/- 0.05	X.XX +/- 0.1°

CUSTOMER
CARCLO

TITLE
**HOLDER FOR BUBBLE OPTIC
SEOUL P4 LED**

DRAWN **MKI** DATE **5-Mar-09**

CHK'D DATE

APP'D DATE

SCALE **5:1** COIL PART No. **SEE TABLE**

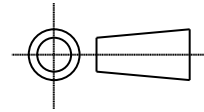
SIZE **A3** COIL DRG. No. **60516** SHEET **1 OF 2**

PART No.	DESCRIPTION
10384	BLACK POLYCARBONATE
10385	WHITE POLYCARBONATE
10386	CLEAR POLYCARBONATE

- NOTES:-
1. MATERIAL: SEE TABLE
 2. FINISH: GOOD POLISH ALL OVER EXCEPT BASE
 3. GEN DRAFT ANGLE 2 DEG.
 4. FILLET RADS 0.15mm UNLESS STATED.

ISS.	DATE	E.C.N.	DESCRIPTION
2	1-Apr-09	04/09/1243	Reverse draft added

© 2007 CARCLO
ALL DIMENSIONS IN mm



CUSTOMER DRAWING



CARCLO TECHNICAL PLASTICS (SLOUGH)
111 BUCKINGHAM AVE, SLOUGH
SL1 4PF, ENGLAND
TEL: +44 1753 575011 FAX: +44 1753 811359
e-mail: design@carclo-optics.com

GENERAL TOLERANCES (UNLESS STATED)

LINEAR	ANGULAR
X +/- 0.25	X +/- 1°
X.X +/- 0.1	X.X +/- 0.5°
X.XX +/- 0.05	X.XX +/- 0.1°

CUSTOMER

CARCLO

TITLE

BUBBLE OPTIC HOLDER
FOR LUXEON K2 LED

DRAWN

MKI

DATE

5-Mar-09

CHK'D

DATE

APP'D

DATE

SCALE

2:1

CARCLO PART No.

SEE TABLE

SIZE

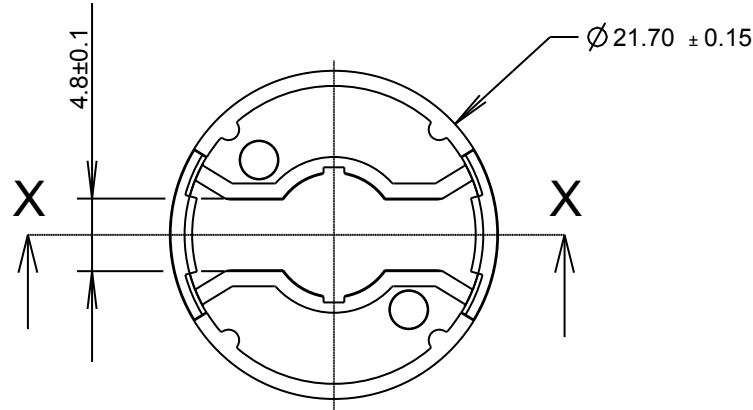
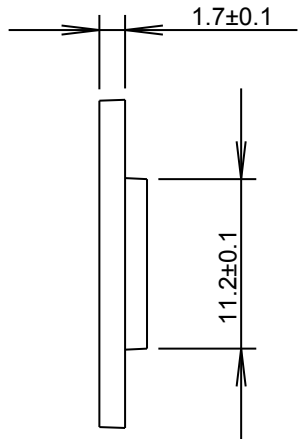
A4

CARCLO DRG. No.

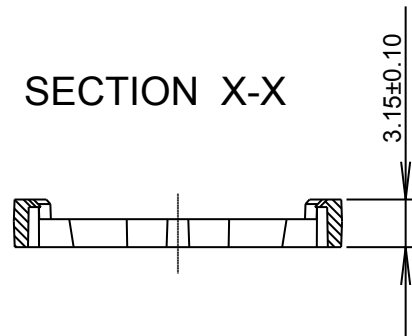
60516

SHEET

2 OF 2



SECTION X-X



3D VIEW
SCALE 1:1

NOTES:-
1. MATERIAL: SEE TABLE

PART No.	DESCRIPTION
10384	BLACK POLYCARBONATE
10385	WHITE POLYCARBONATE
10386	CLEAR POLYCARBONATE