
Carclo-Optics' BJB connection system for COB LEDs

carclo Optics

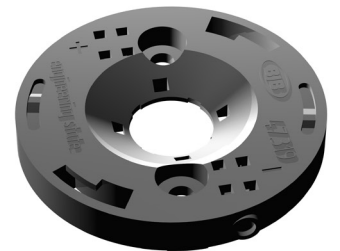
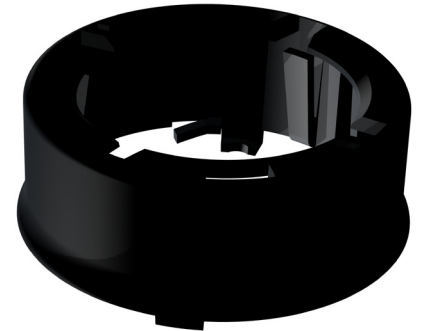
Part Number: 12875

Use with Optics: 10755, 10756, 10757, 10758, 10759

Title: Ø30mm Optics Holder for Ø40mm BJB Bases

Function: This holder has been developed to allow the use of Carclo's standard range of Ø30mm optics with the range of Ø40mm CoB (Chip on Board) bases from BJB.

- A unique Compact, clip together optic assembly.
- Overall footprint:- 40mm diameter, Height 19mm (including BJB connector base)
- Solderless system with push-in electrical connectors
- Variety of optical beam shapes (Narrow, Medium, wide & Elliptical) and optic finishes (clear, frosted & ripple)
- Beam angle range covered:- 18 to 44 deg.





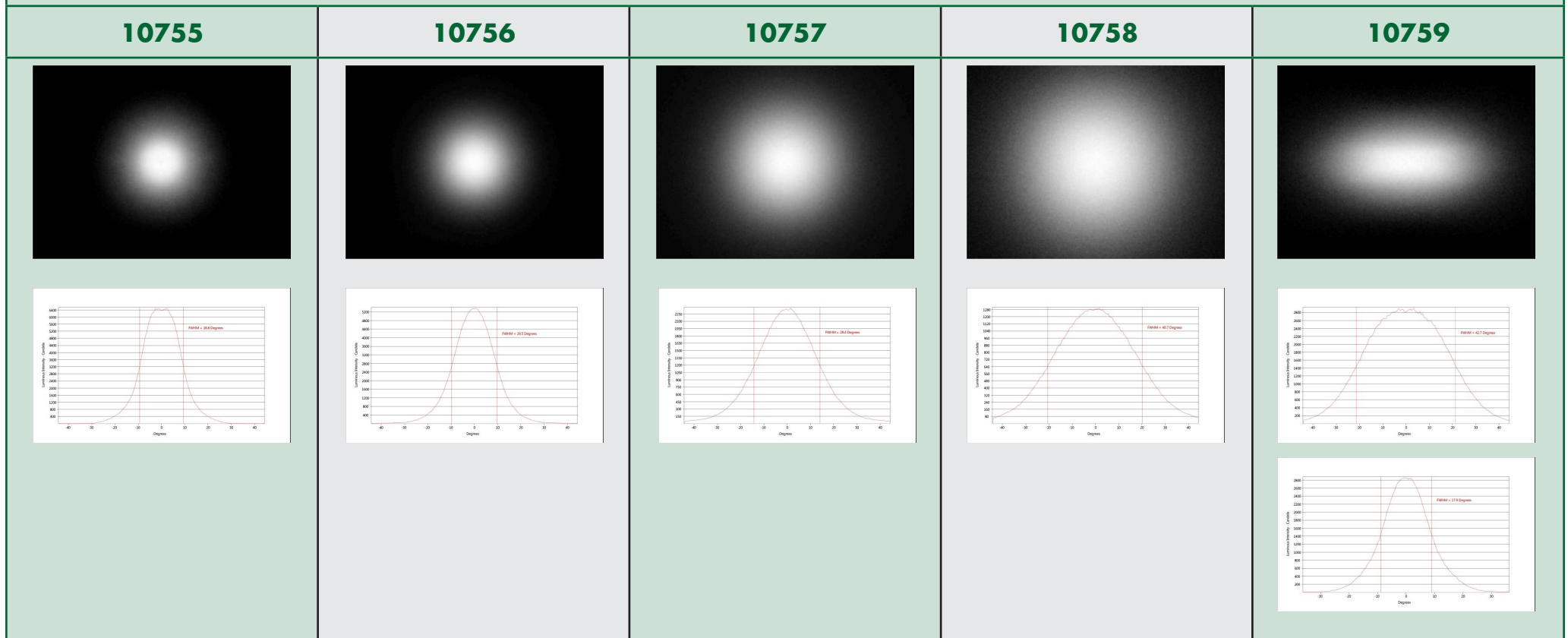
BJB Base Pt No	CITIZEN	CREE	EDISON	LEXTAR	OSRAM	PROLIGHT	TRIDONIC
47.319.6060.50	CL-L020/022		HM05/09	NIMBUS 500/1000		PACB 022	LES 10
47.319.6101.50		CXA 15xx					
47.319.6111.50				NIMBUS 1500	Soleriq S13 & X13		
47.319.6120.50		CXA 13xx					
47.319.6190.50					Soleriq P6		
47.319.6200.50					Soleriq P9		

Handling instructions

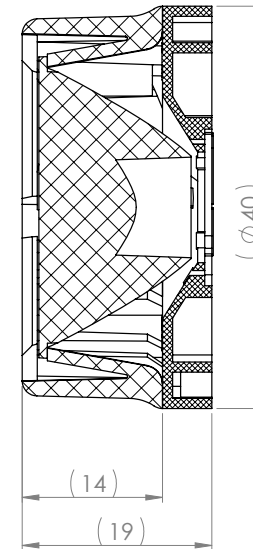
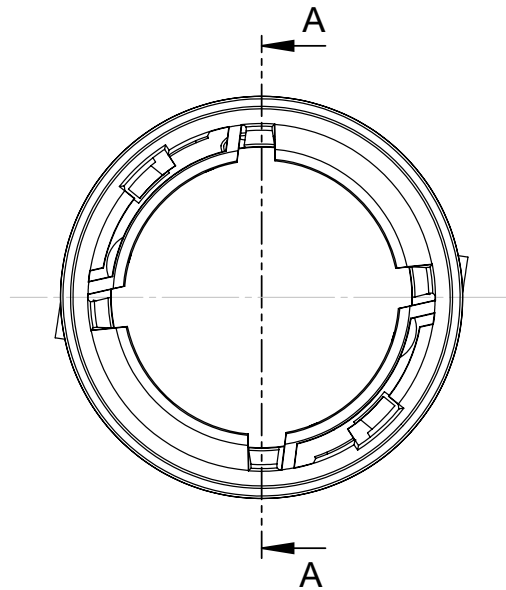
- Do not handle or install lenses without wearing gloves, skin oils may damage the lens or the light transmission.
- Clean lenses with a mild soap and water and dry with a clean soft cloth.
- Do not use any commercial solvents on lenses.
- Mount holders with low Odour epoxies and allow time for them to out gas to stop lenses fogging.



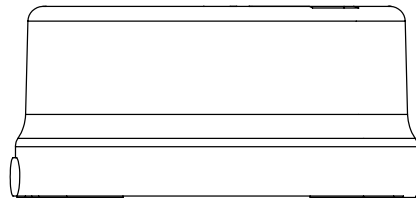
Optical Data • Example results achieved using the Cree XLamp CXA 1310 White



For more information and results using a range of LEDs please refer to www.carclo-optics.com/optics-for-leds



SECTION A-A





carclo
Optics



CUSTOMER DRAWING

SHEET 1 OF 1

		Title		30mm Lens & Holder on BJB 40mm Base	
<small>103 Buckingham Avenue SL1 4PF, UK. Tel: +44(0) 01753 575 011 Fax: +44(0) 01753 811 359 sales@carclo-optics.com www.carclo-optics.com</small>		Drawn by	P.SUTTON	Customer	
<small>THIRD ANGLE PROJECTION</small> 		<small>GENERAL TOLERANCES UNLESS OTHERWISE STATED</small> <small>LINEAR</small> 0 ± 0.25 0.0 ± 0.1 0.00 ± 0.05		<small>CARCLO Optics</small> <small>CONFIDENTIAL: UNAUTHORISED COPYING, DISCUSSION & DISTRIBUTION PROHIBITED</small>	
		DIMENSION IN mm		Format Size	A3
		CAD File	Osram_30mm_Assembly		
		Part N°		Drw N°	