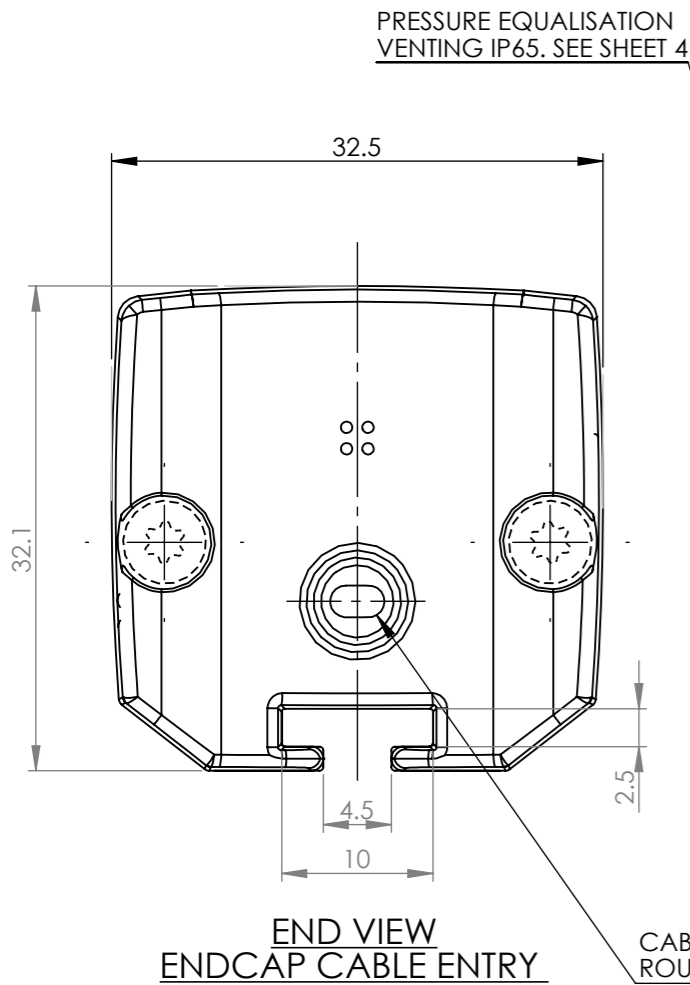
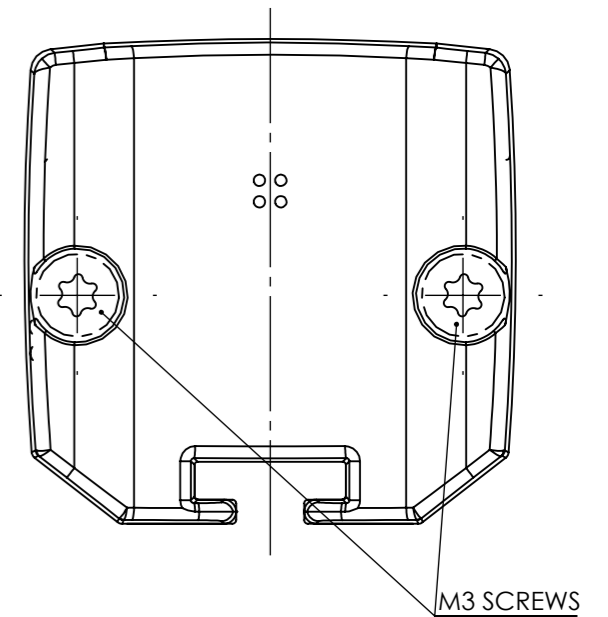
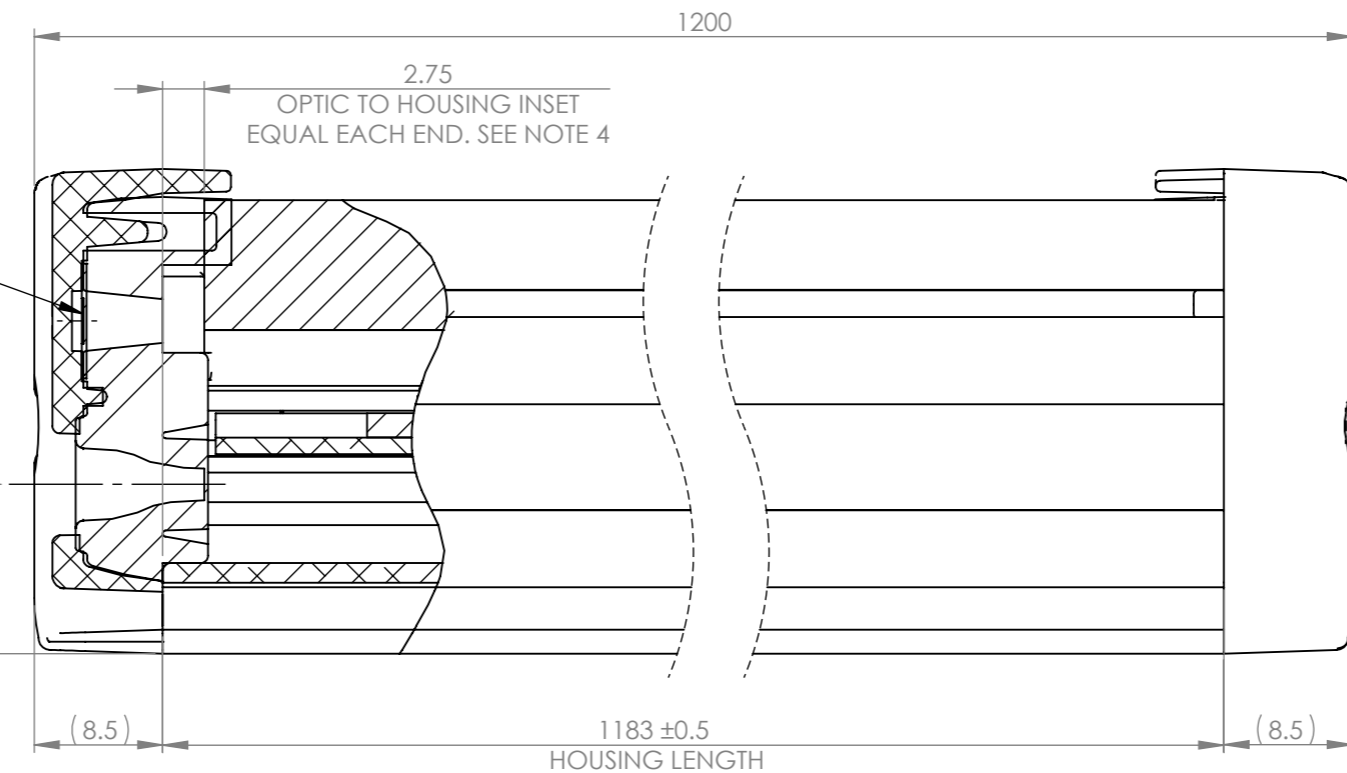
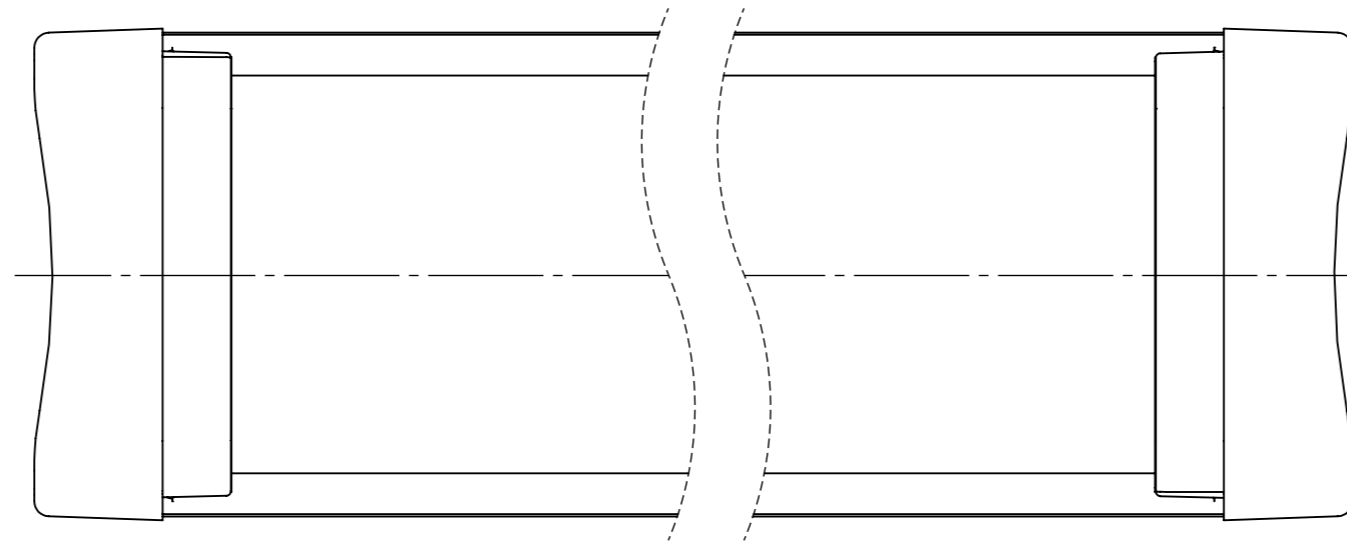


REVISIONS			
REV.	ECN No	DESCRIPTION	DATE
4	1628	SHT.3 INSERTED, ADDING 60217 FLAT COVER. M.WELLS	31/10/2025



CABLE ENTRY WITH PUSHOUT MEMBRANE, SEAL RANGE ROUND: $\varnothing 5.4-5.8\text{mm}$ / OVAL: $5.0-5.8\text{mm} \times 3.3-3.6\text{mm}$



CUSTOMER DRAWING

SHEET 1 OF 4

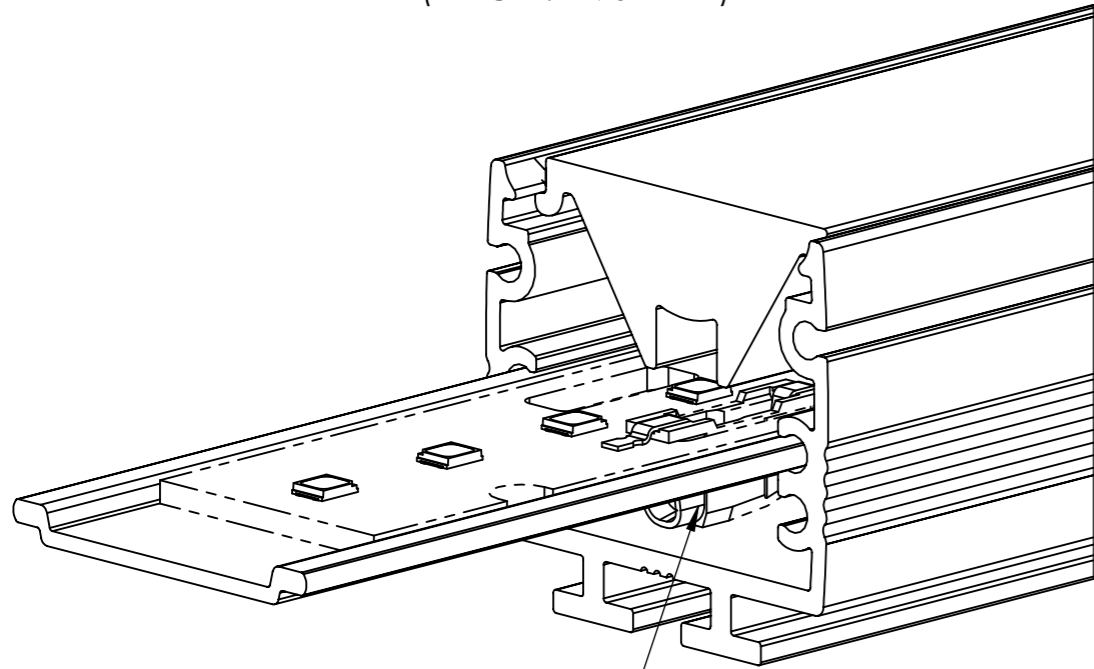
PRODUCT NOTES:

- 1 - MATERIALS: SEE TABLE SHEET 4
- 2 - FOR ALL OTHER DIMENSIONS SEE 3D CAD FILE
- 3 - AUXILIARY DIMENSIONS (X.XX) ARE FOR INFORMATION ONLY
- 4 - ALUMINIUM HOUSING LENGTH (mm) = LENGTH OF LINEAR OPTIC + 5.5mm (2.75mm INSET EACH END)

<p>Unit 6-7 Faraday Road Rabans Lane Industrial Area, Aylesbury, HP19 8RY, UK. Tel: +44(0) 01753 575 011 sales@carclo-optics.com www.carclo-optics.com</p>	Title		26mm TRI-EXTRUDED OPTIC ASSEMBLY			
	Drawn by	M Wells	Customer	CARCLO	Scale	2:1
THIRD ANGLE PROJECTION	GENERAL TOLERANCES UNLESS OTHERWISE STATED		DIMENSION IN mm		Format Size	A3
	CARCLO Optics CONFIDENTIAL: UNAUTHORISED COPYING, DISCUSSION & DISTRIBUTION PROHIBITED		CAD File	60159 Rev4 Tri-Extruded Assy		
	Part N°	60159		Project N°	P00880	

REVISIONS			
REV.	ECN No	DESCRIPTION	DATE
4	1628	SHT.3 INSERTED, ADDING 60217 FLAT COVER. M.WELLS	31/10/2025

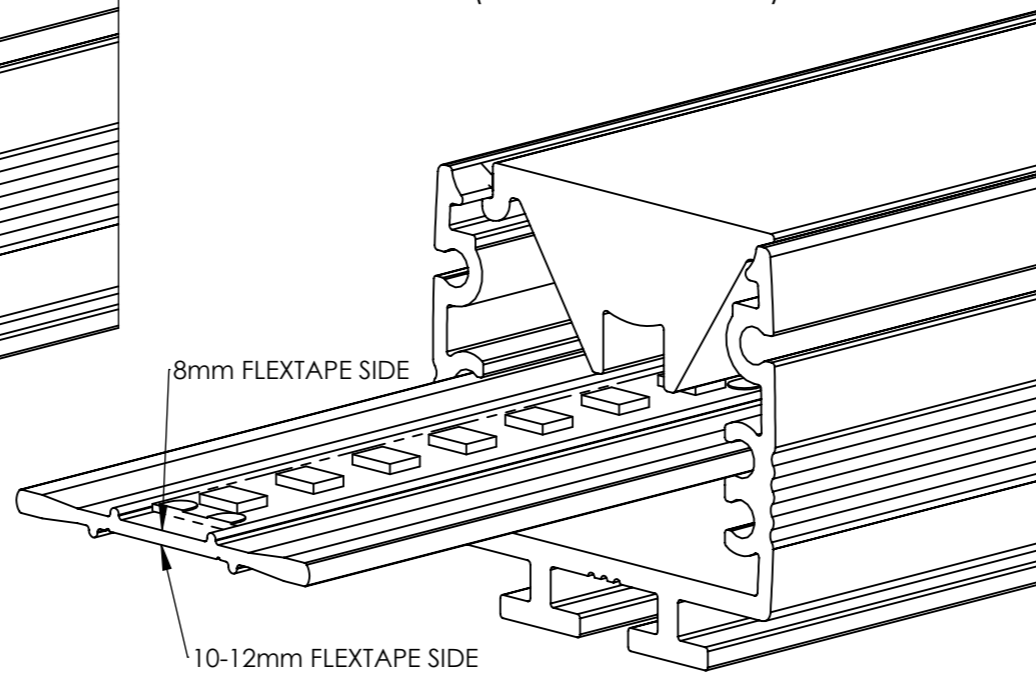
20mm LINEAR LED STRIP PCB
WITH INSERT 60155
 (LENGTH: 1176±1mm)



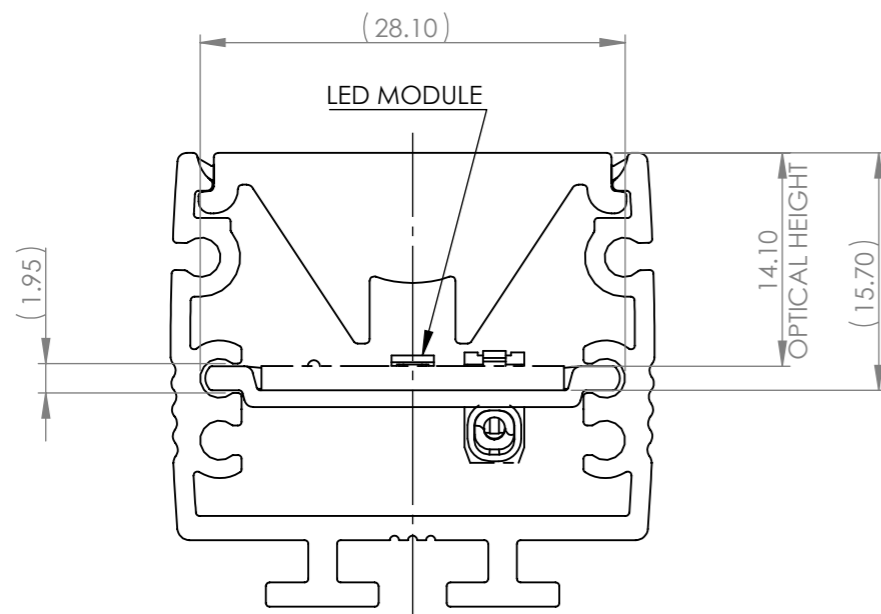
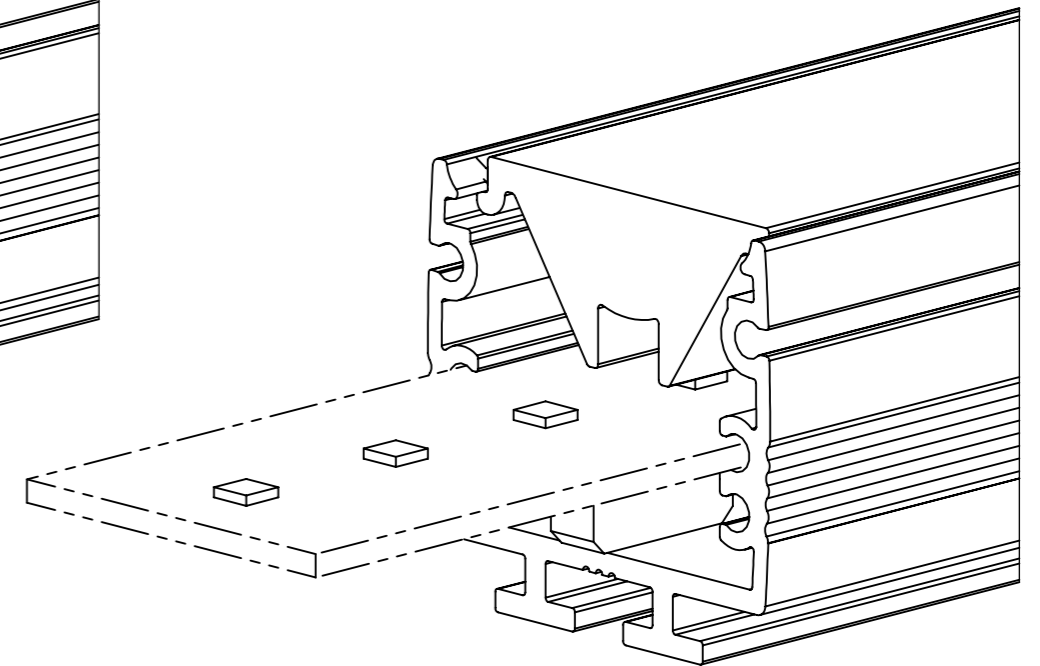
BACK CONNECTOR TYPE

TRI-EXTRUDED OPTIC ASSEMBLY, LED MODULE OPTIONS
 (LED MODULES ARE CUSTOMER SUPPLIED COMPONENTS)

8-12mm FLEXIBLE LED TAPE
WITH INSERT 60219
 (LENGTH: 1176±1mm)



27mm CUSTOM LINEAR LED PCB
 (27 x 1.6mm)



HOUSING END VIEW DETAILING
LED MODULE POSITION

CUSTOMER DRAWING

SHEET 2 OF 4

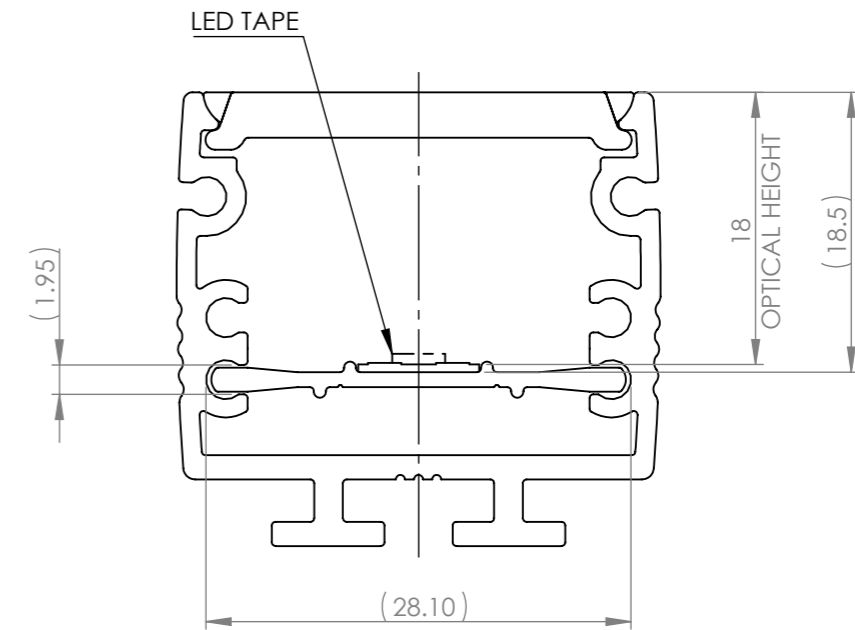
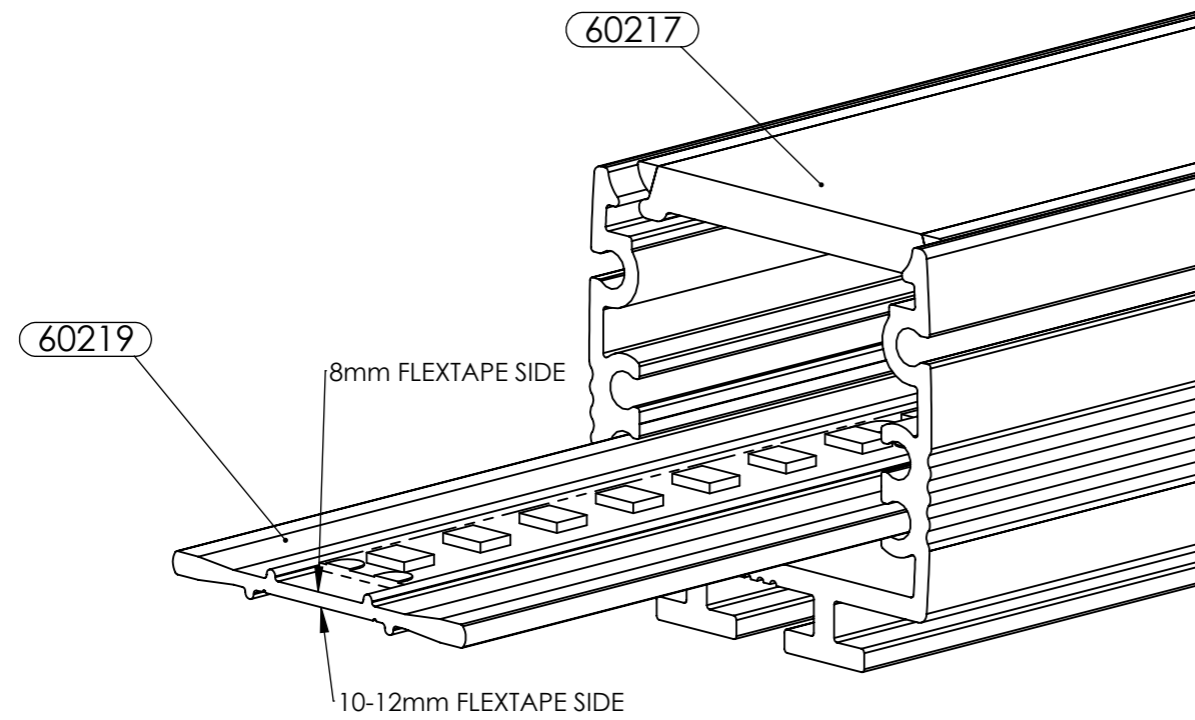
<p>Unit 6-7 Faraday Road Rabans Lane Industrial Area, Aylesbury, HP19 8RY, UK. Tel: +44(0) 01753 575 011 sales@carclo-optics.com www.carclo-optics.com</p>	Title		26mm TRI-EXTRUDED OPTIC ASSEMBLY			
	Drawn by	M Wells	Customer	CARCLO	Scale	2:1
THIRD ANGLE PROJECTION	GENERAL TOLERANCES UNLESS OTHERWISE STATED		DIMENSION IN mm		Format Size	A3
	CARCLO Optics CONFIDENTIAL: UNAUTHORISED COPYING, DISCUSSION & DISTRIBUTION PROHIBITED		CAD File	60159 Rev4 Tri-Extruded Assy		
	Part N°	60159		Project N°	P00880	

REVISIONS			
REV.	ECN No	DESCRIPTION	DATE
4	1628	SHT.3 INSERTED, ADDING 60217 FLAT COVER. M.WELLS	31/10/2025

TRI-EXTRUDED FLAT COVER ASSEMBLY, FLEXIBLE LED TAPE OPTION

(LED MODULES ARE CUSTOMER SUPPLIED COMPONENTS)



8-12mm FLEXIBLE LED TAPE WITH INSERT 60219
(LENGTH: 1176±1mm)



**HOUSING END VIEW DETAILING
LED TAPE POSITION
(FLAT COVER ONLY)**

CUSTOMER DRAWING

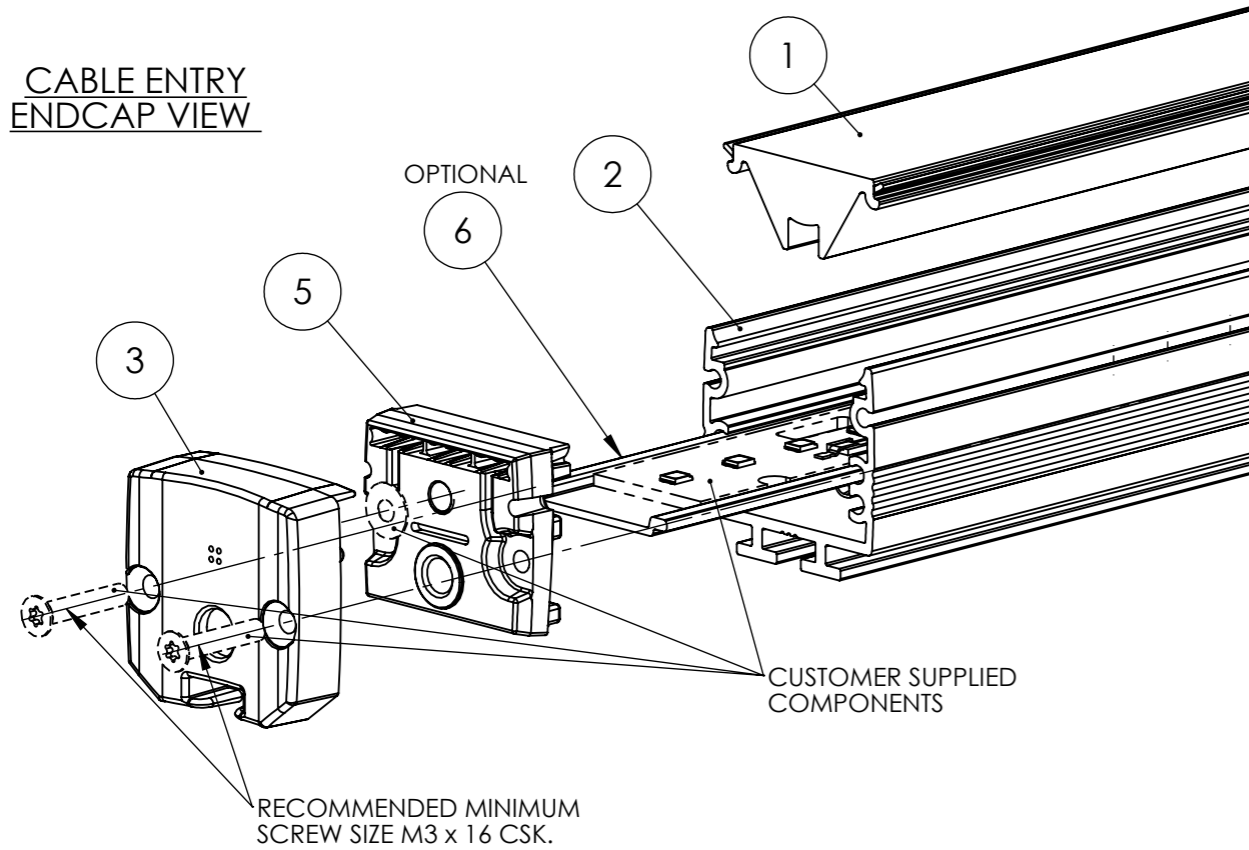
SHEET 3 OF 4

 Unit 6-7 Faraday Road Rabans Lane Industrial Area, Aylesbury, HP19 8RY, UK. Tel: +44(0) 01753 575 011 sales@carclo-optics.com www.carclo-optics.com	Title	26mm TRI-EXTRUDED OPTIC ASSEMBLY				
	Drawn by	M Wells	Customer	CARCLO	Scale	2:1
 THIRD ANGLE PROJECTION	GENERAL TOLERANCES UNLESS OTHERWISE STATED	CARCLO Optics CONFIDENTIAL: UNAUTHORISED COPYING, DISCUSSION & DISTRIBUTION PROHIBITED	DIMENSION IN mm		Format Size	A3
			CAD File	60159 Rev4 Tri-Extruded Assy		
			Part N°	60159	Project N°	P00880

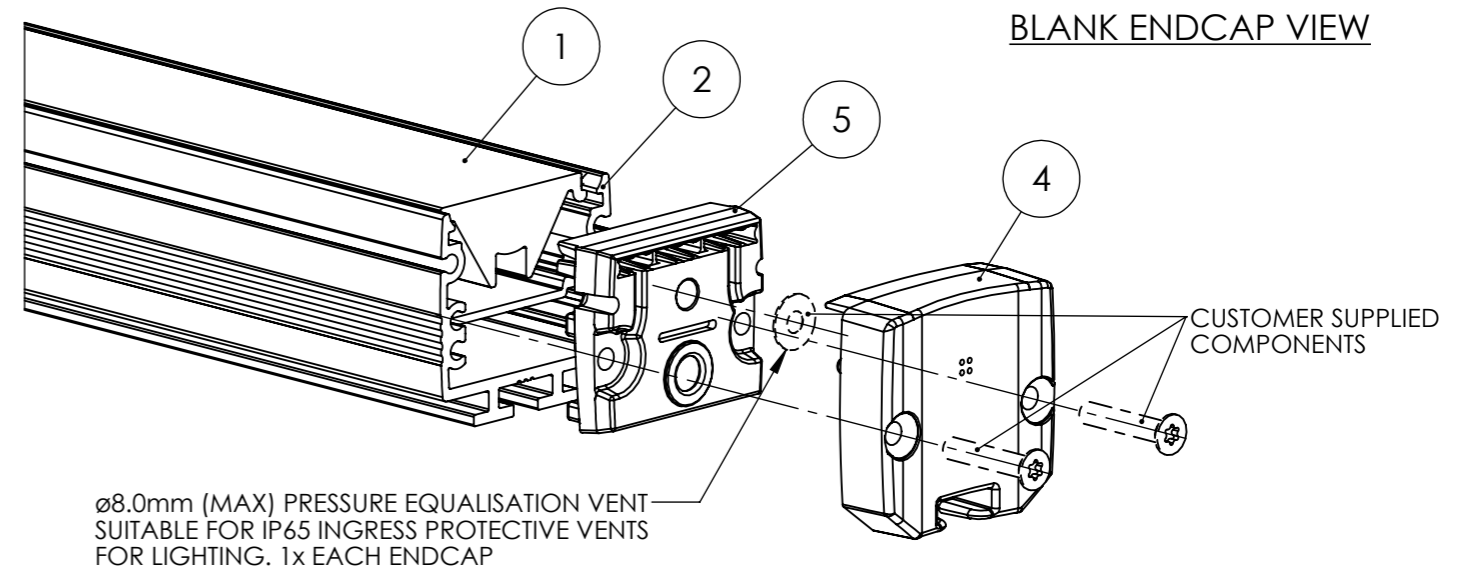
REVISIONS			
REV.	ECN No	DESCRIPTION	DATE
4	1628	WAS SHT.3, ASSEMBLY KITS REMOVED M.WELLS	31/10/2025

TRI-EXTRUDED OPTIC GENERAL ASSEMBLY

**CABLE ENTRY
ENDCAP VIEW**



BLANK ENDCAP VIEW



FOR OPTIC DETAILS SEE SEPARATE DRAWING



ITEM	PART No.	PART DESCRIPTION	QTY PER ASSEMBLY	MATERIAL	COLOUR
1	60152	EXTRUDED OPTIC WALL GRAZER	1	PC	CLEAR
	60153	EXTRUDED OPTIC WALL WASHER		PC	CLEAR
	60165	EXTRUDED OPTIC NARROW BEAM		PMMA	CLEAR
	60166	EXTRUDED OPTIC MEDIUM BEAM		PMMA	CLEAR
	60167	EXTRUDED OPTIC WIDE BEAM		PMMA	CLEAR
	60217	EXTRUDED FLAT COVER OPAL DIFFUSED		PC	OPAL
2	60154	EXTRUDED HOUSING	1	AL 6063	ANODISE CLR
3	60156	ENDCAP CABLE ENTRY	1	PC-ABS	L/GREY RAL7035
4	60157	ENDCAP BLANK	1	PC-ABS	L/GREY RAL7035
5	60158	GASKET SEAL	2	SILICONE RUBBER	NATURAL
				AL 6063	ANODISE CLR
6	60155	EXTRUDED HOUSING INSERT, 20mm LED PCB	1 OPTIONAL	AL 6063	ANODISE CLR
	60219	EXTRUDED HOUSING FLEX TAPE INSERT		AL 6063	ANODISE CLR

GENERAL ASSEMBLY INSTRUCTION:

- 1 - SELECT LED MODULE OPTION TO USE, SEE SHT.2/3. OPTIONAL INSERT MAYBE REQUIRED TO SUPPORT LED STRIPS. LED INSERTS ARE SUPPLIED LONG TO ALLOW CUSTOMER MODIFICATION TO SUIT PCB CONNECTOR/SCREW CLEARANCE AND CABLE ANCHORAGE
- 2A - 20mm LED PCB; INSERT 60155 REQUIRES CUT-OUTS TO CLEAR LED PCB BACK CONNECTORS & MODIFICATIONS TO SUIT ENDCAP SCREW LENGTH (5mm MIN EACH END) & CABLE ANCHOR METHOD USED. BOND PCB TO INSERT.
- 2B - 8-12mm FLEXTAPE; INSERT 60219 REQUIRES MODIFICATIONS TO SUIT ENDCAP SCREW LENGTH (5mm MIN EACH END) & CABLE ANCHOR METHOD USED. ADHERE LED FLEXTAPE TO INSERT USING GUIDE RAILS TO EASE FITTING.
- 3 - PREPARE THREADS IN HOUSING FOR ENDCAP SCREWS (DEPENDANT ON SCREW TYPE USED)
- 4 - WHERE IP65 REQUIRED, FIT ADHESIVE INGRESS PROTECTIVE VENTS INTERNAL TO EACH ENDCAP RECESS.
- 5 - FIT OPTIC FROM TOP OF HOUSING, POSITION TO ENSURE EQUALLY SPACED INSET FROM EACH END OF HOUSING (SEE SHT.1) AND FIRMLY PRESS ALONG OPTIC TO CLIP IN PLACE.
- 6 - FIT GASKET SEAL TO NON-CABLE END OF HOUSING, SEATING EVENLY AND FIT ENDCAP BLANK OVER GASKET. FIT AND TIGHTEN 2x ENDCAP SCREWS 0.4Nm MAX SO ENDCAP FIRMLY SEATED TO HOUSING END.
- 7 - PREPARE LED MODULE SUPPLY CABLE FOR CONNECTION. FIT ENDCAP CABLE ENTRY & GASKET SEAL OVER CABLE END AND MAKE CONNECTIONS TO LED MODULE.
- 8 - SLIDE LED MODULE PLUS OPTIONAL INSERT INTO HOUSING OPEN END, ENSURE CORRECT POSITION.
- 9 - POSITION GASKET SEAL TO CABLE ENTRY END OF HOUSING, SEATING EVENLY AND ENDCAP CABLE ENTRY OVER CABLE AND GASKET. FIT AND TIGHTEN 2x ENDCAP SCREWS 0.4Nm MAX SO ENDCAP FIRMLY SEATED TO HOUSING END.

CUSTOMER DRAWING

SHEET 4 OF 4

 Unit 6-7 Faraday Road Rabans Lane Industrial Area, Aylesbury, HP19 8RY, UK. Tel: +44(0) 01753 575 011 sales@carclo-optics.com www.carclo-optics.com	Title		26mm TRI-EXTRUDED OPTIC ASSEMBLY			
	Drawn by	M Wells	Customer	CARCLO	Scale	1:1
THIRD ANGLE PROJECTION	GENERAL TOLERANCES UNLESS OTHERWISE STATED		DIMENSION IN mm		Format Size	A3
	CARCLO Optics CONFIDENTIAL: UNAUTHORISED COPYING, DISCUSSION & DISTRIBUTION PROHIBITED		CAD File	60159 Rev4 Tri-Extruded Assy		
	Part N°	60159		Project N°	P00880	