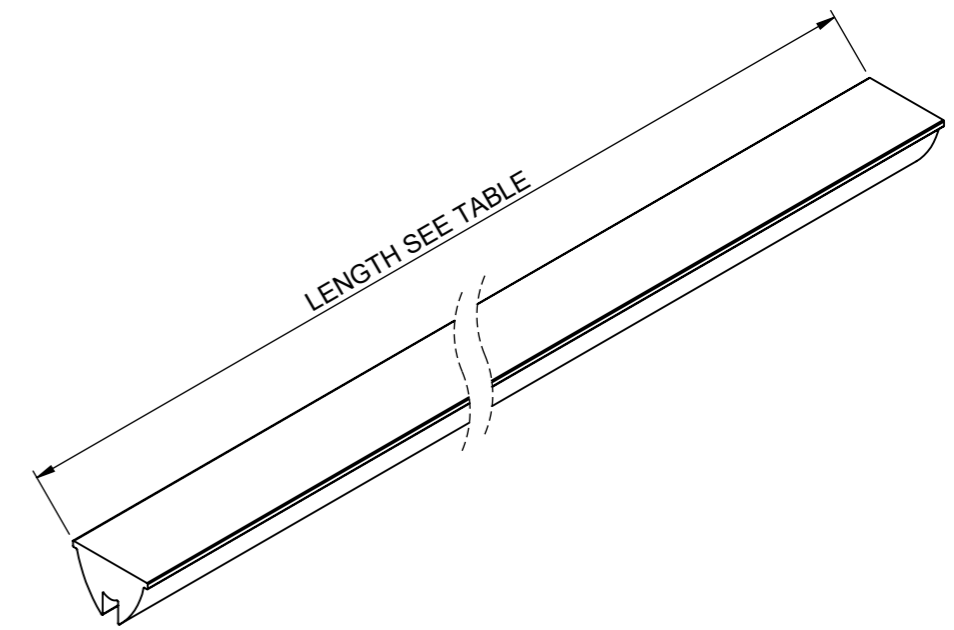
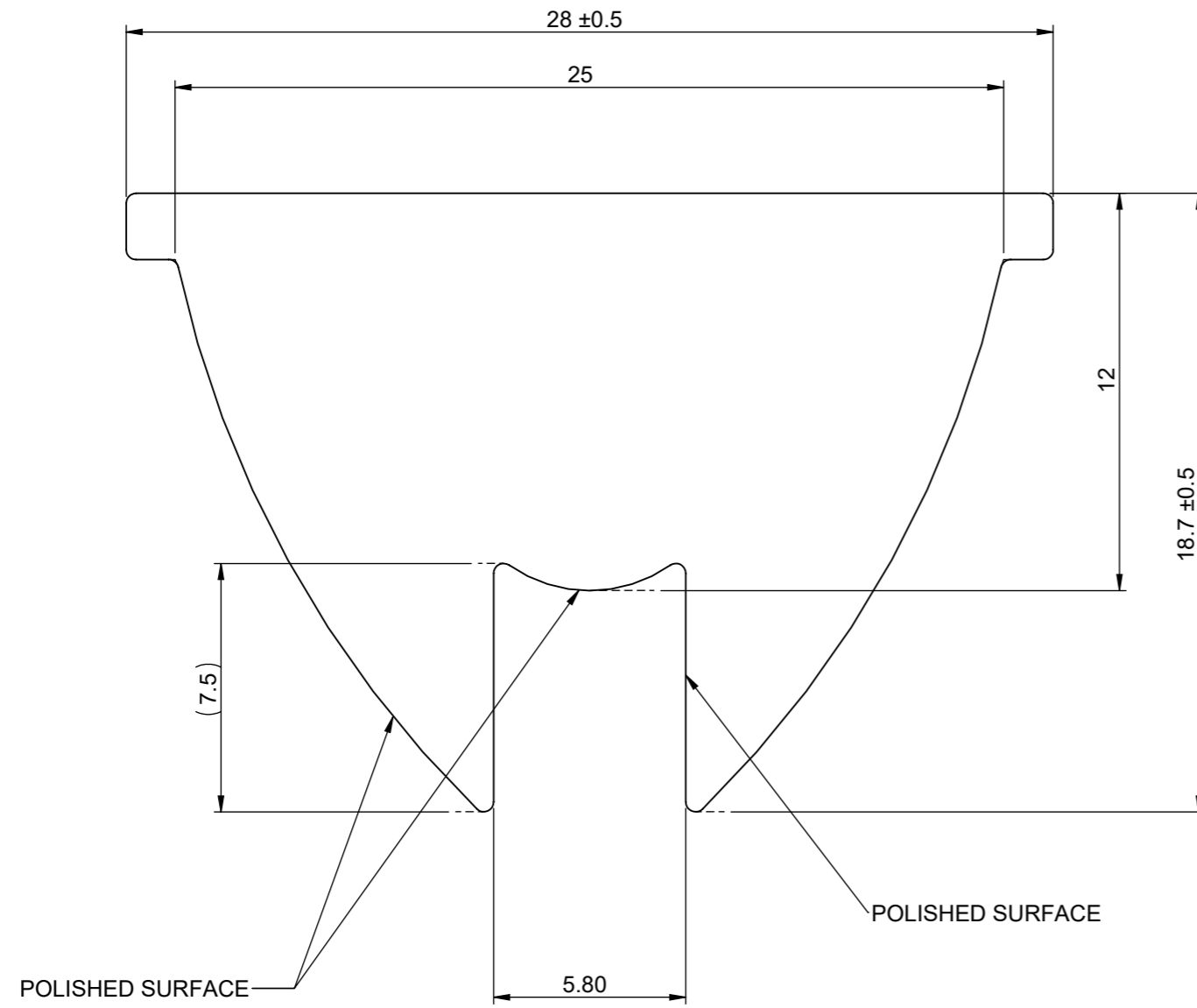


REVISIONS			
REV.	DCN No	DESCRIPTION	DATE
2A	1543	TOLERANCE CLASS ADDED. M WELLS	24/05/2017
2B	1567	TABLE UPDATED TO STANDARD LENGTHS ONLY. M.WELLS	11/04/2018
2C	1627	CUT LENGTH TOLERANCE WAS ±3.0mm M WELLS	04/03/2025



- NOTES:
- 1 - MATERIAL: PMMA
  - 2 - SURFACE FINISH:  
POLISHED SURFACES SPI-A1  
NOT SPECIFIED SURFACES SPI-A3
  - 4 - GENERAL DRAFT  $2^\circ$
  - 5 - REFER TO 3D CAD FOR MISSING DIMENSIONS
  - 6 - APPROX MASS 366.5g/m  $\pm 18$ g
  - 7 - AUXILIARY DIMENSIONS (X.XX) ARE FOR INFORMATION ONLY

PART No	LENGTH	TOLERANCE
12667	600 mm	$\pm 0.5$ mm
12750	300 mm	$\pm 0.3$ mm

## CUSTOMER DRAWING

SHEET 2 OF 2

 Unit 6-7 Faraday Road Rabans Lane Industrial Area, Aylesbury, HP19 8RY, UK. Tel: +44(0) 01753 575 011 sales@carclo-optics.com www.carclo-optics.com	Title		EXTRUDED 28MM OPTIC - 10 DEGREE		
	Drawn by	ADC	Customer	CARCLO	Scale
THIRD ANGLE PROJECTION 	GENERAL TOLERANCES UNLESS OTHERWISE STATED DIN16941 2A/2B	DIMENSION IN mm		Format Size	A3
		CAD File	12667-70162_Rev2C		Part N°
CARCLO Optics CONFIDENTIAL: UNAUTHORISED COPYING, DISCUSSION & DISTRIBUTION PROHIBITED		Project N°	70162		