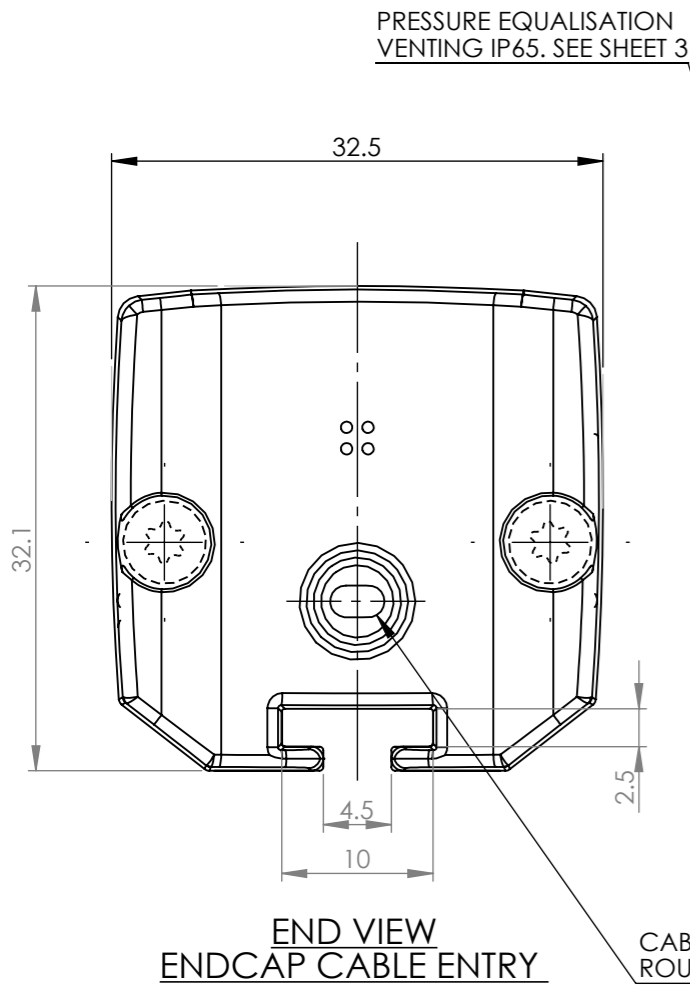
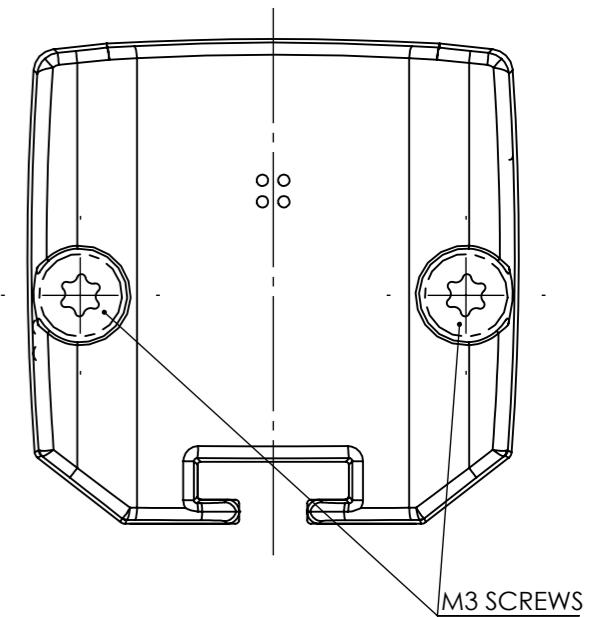
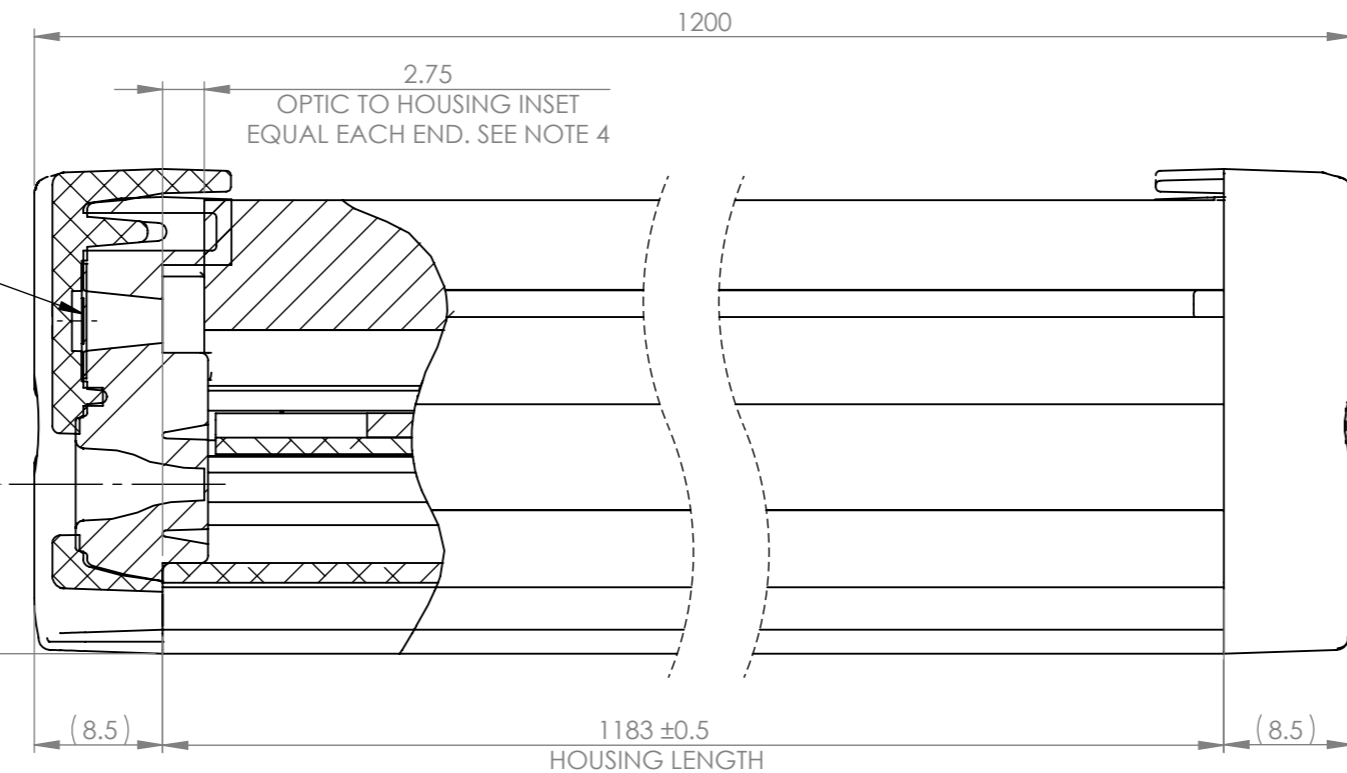
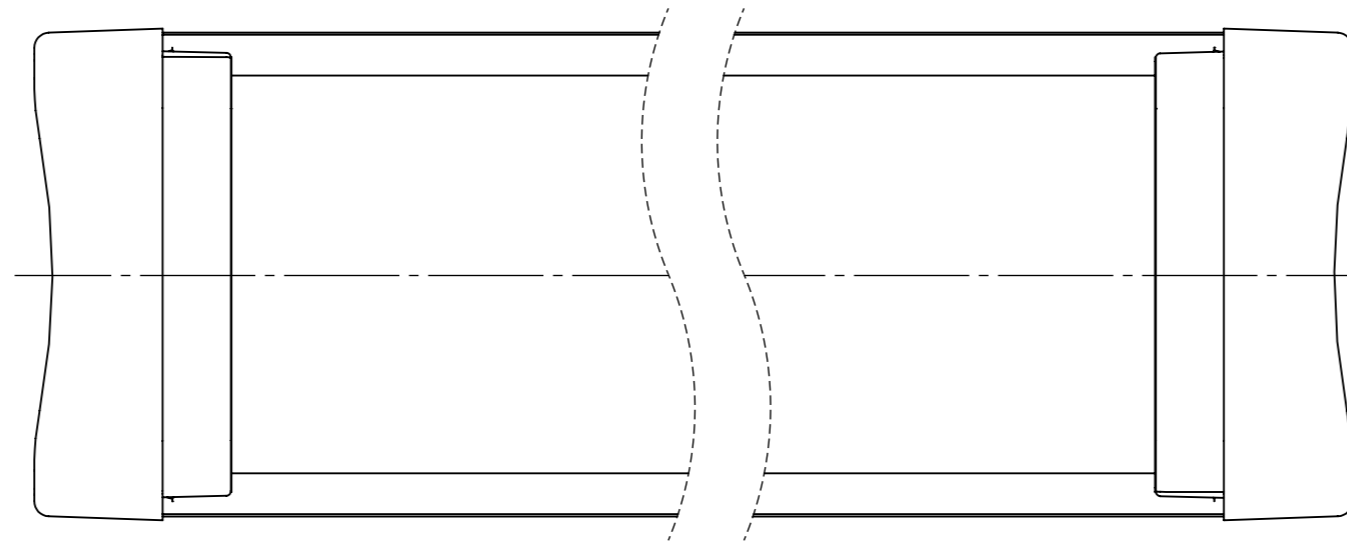
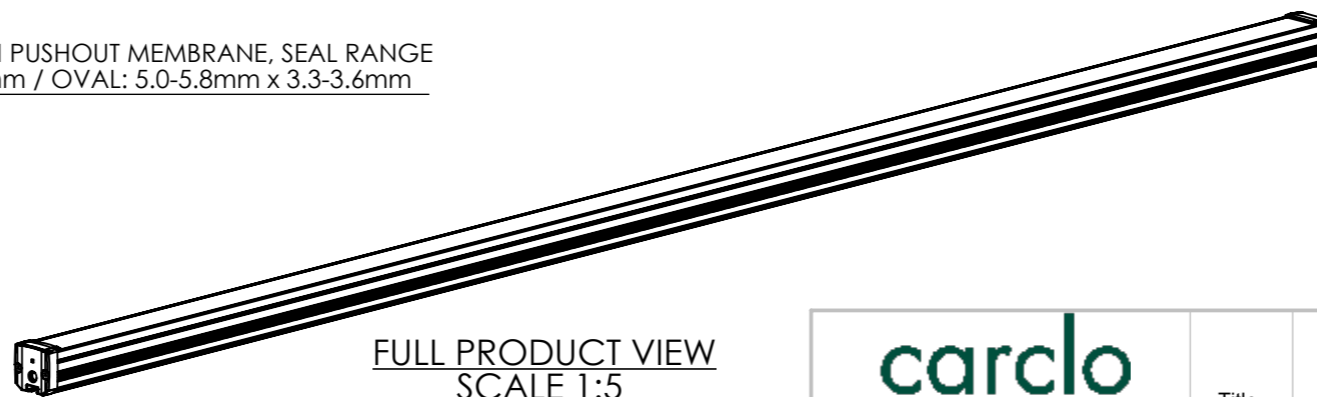


REVISIONS			
REV.	ECN No	DESCRIPTION	DATE
3	1626	VIEWS UPDATED, FLEXTAPE INSERT 60219 ADDED. M.WELLS	30/09/2024



CABLE ENTRY WITH PUSHOUT MEMBRANE, SEAL RANGE ROUND: $\varnothing 5.4-5.8\text{mm}$ / OVAL: $5.0-5.8\text{mm} \times 3.3-3.6\text{mm}$



CUSTOMER DRAWING

SHEET 1 OF 3

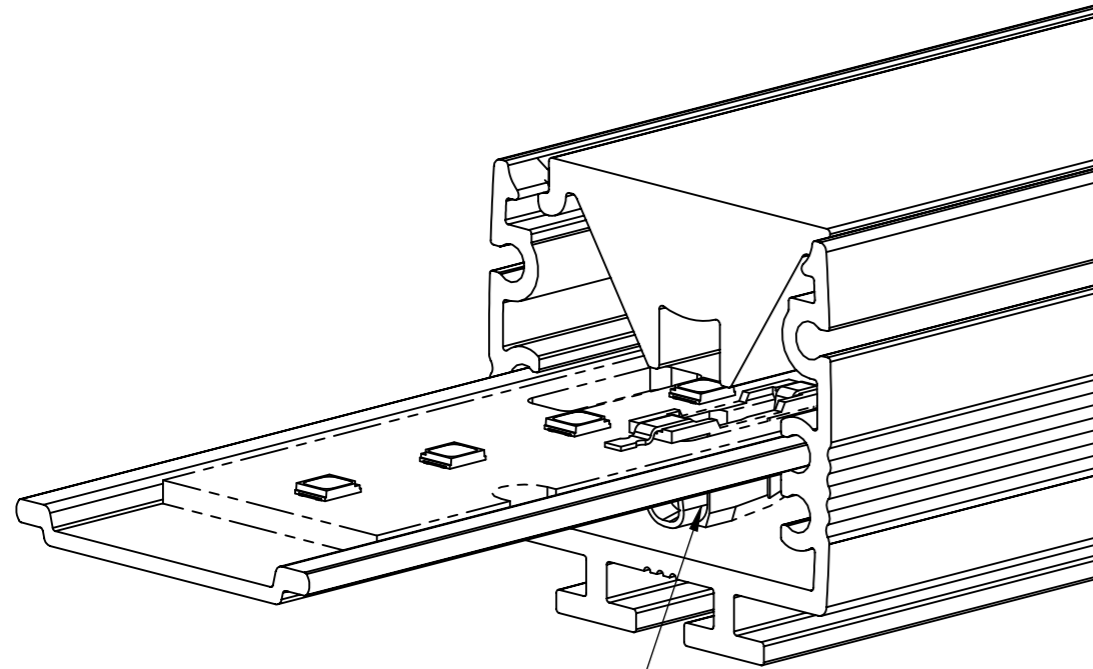
PRODUCT NOTES:

- 1 - MATERIALS: SEE TABLE SHEET 3
- 2 - FOR ALL OTHER DIMENSIONS SEE 3D CAD FILE
- 3 - AUXILIARY DIMENSIONS (X.XX) ARE FOR INFORMATION ONLY
- 4 - ALUMINIUM HOUSING LENGTH (mm) = LENGTH OF LINEAR OPTIC + 5.5mm (2.75mm INSET EACH END)

		Title		26mm TRI-EXTRUDED OPTIC ASSEMBLY	
Unit 6-7 Faraday Road Rabans Lane Industrial Area, Aylesbury, HP19 8RY, UK. Tel: +44(0) 01753 575 011 sales@carclo-optics.com www.carclo-optics.com		Drawn by	M Wells	Customer	CARCLO
		GENERAL TOLERANCES UNLESS OTHERWISE STATED		DIMENSION IN mm Format Size A3	
CARCLO Optics CONFIDENTIAL: UNAUTHORISED COPYING, DISCUSSION & DISTRIBUTION PROHIBITED		CAD File	60159 Rev3 Tri-Extruded Assy		Scale
		Part N°	60159	Project N°	P00880

REVISIONS			
REV.	ECN No	DESCRIPTION	DATE
3	1626	VIEWS UPDATED, FLEXTAPE INSERT 60219 ADDED M.WELLS	30/09/2024

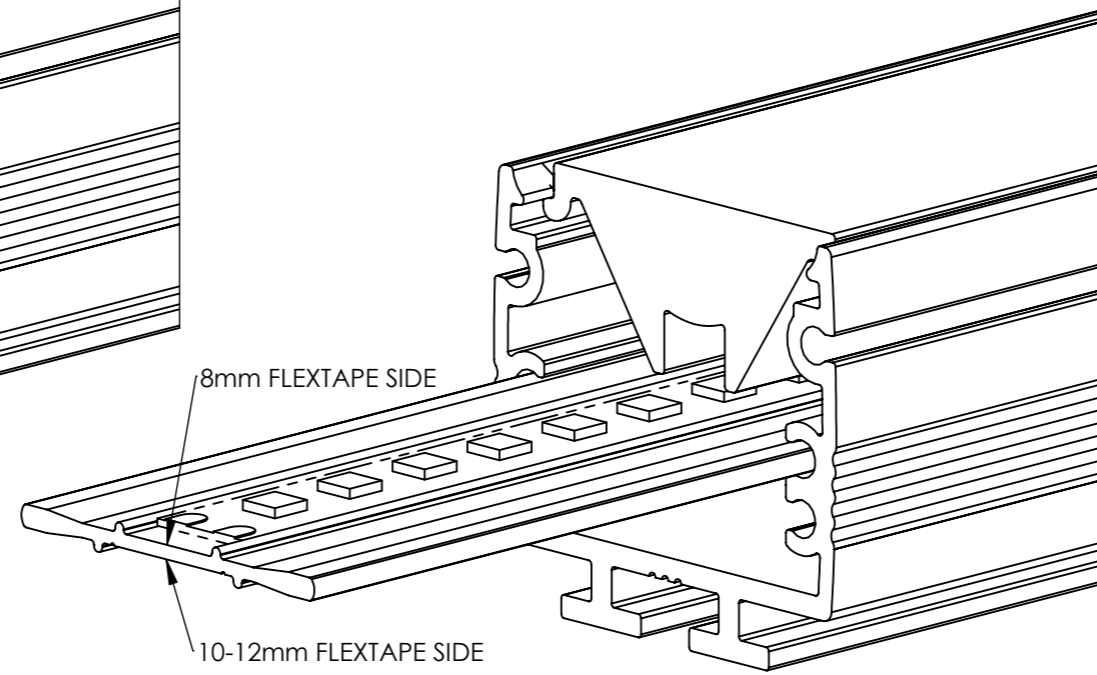
20mm LINEAR LED STRIP PCB WITH INSERT 60155



BACK CONNECTOR TYPE

TRI-EXTRUDED OPTIC ASSEMBLY, LED MODULE OPTIONS
(LED MODULES ARE CUSTOMER SUPPLIED COMPONENTS)

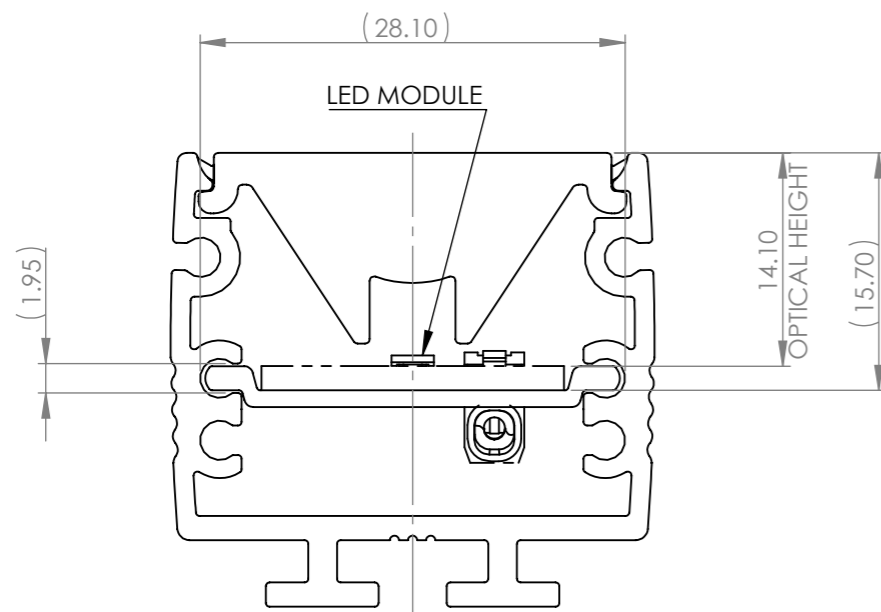
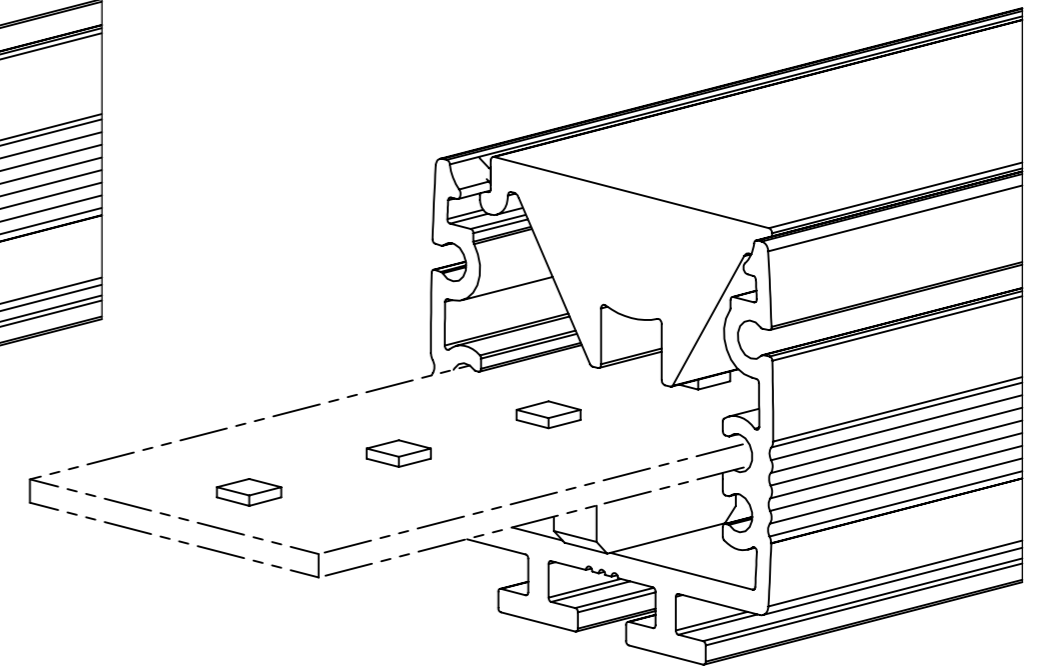
8-12mm FLEXIBLE LED TAPE WITH INSERT 60219



8mm FLEXTAPE SIDE

10-12mm FLEXTAPE SIDE



27mm CUSTOM LINEAR LED PCB (27 x 1.6mm)



HOUSING END VIEW DETAILING LED MODULE POSITION

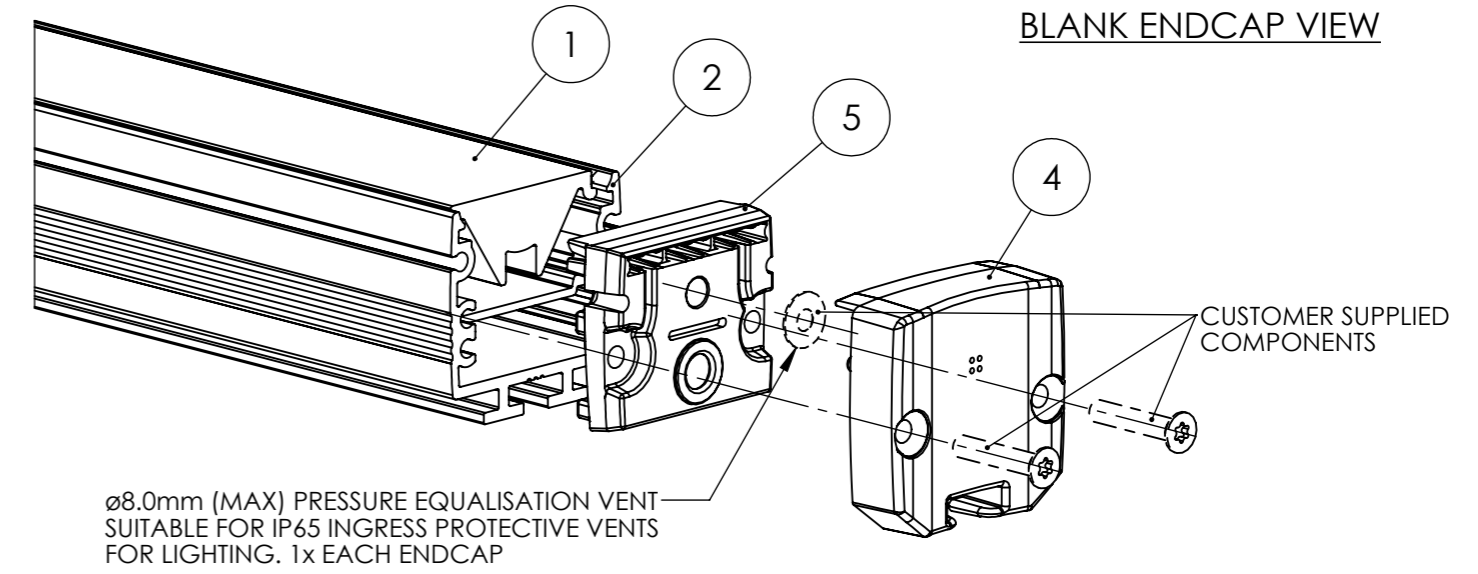
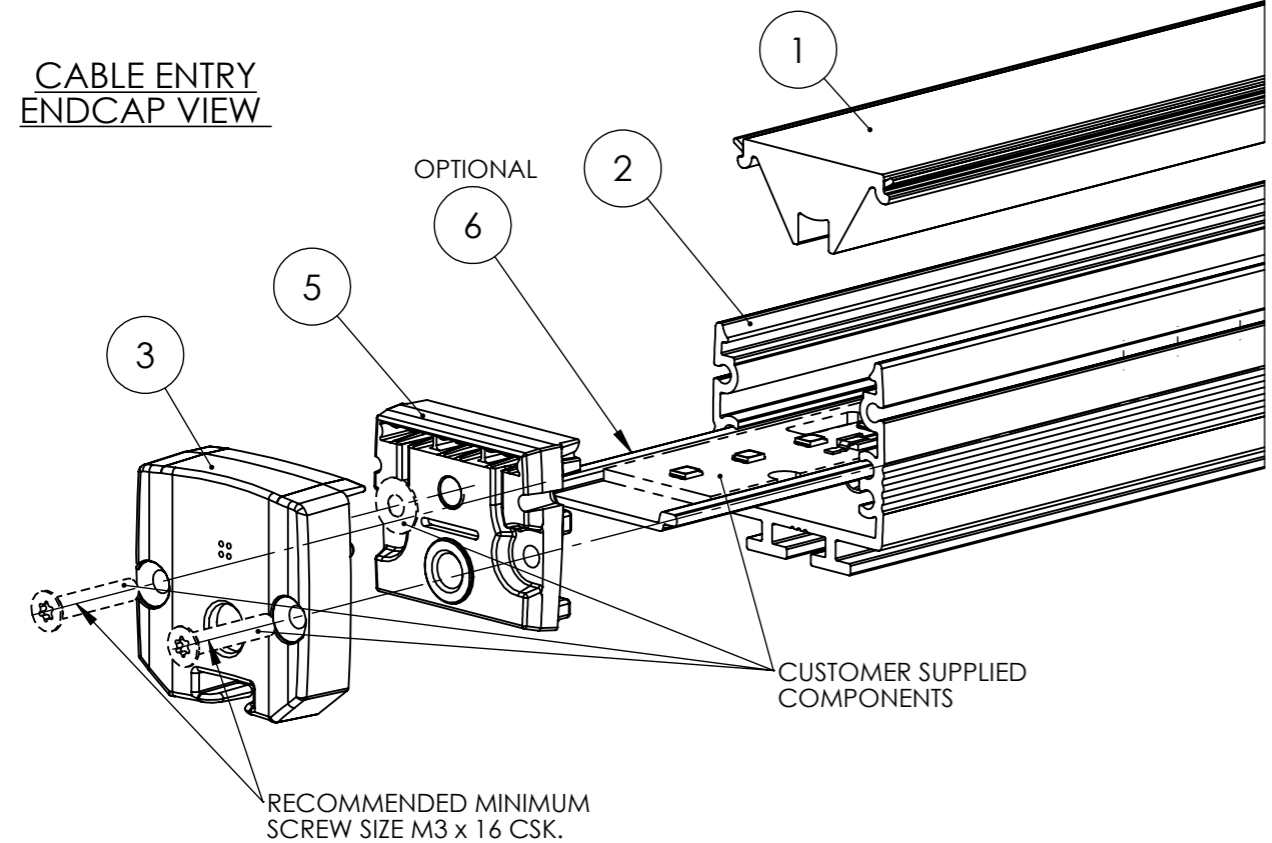
CUSTOMER DRAWING

SHEET 2 OF 3

 Unit 6-7 Faraday Road Rabans Lane Industrial Area, Aylesbury, HP19 8RY, UK. Tel: +44(0) 01753 575 011 sales@carclo-optics.com www.carclo-optics.com		Title		26mm TRI-EXTRUDED OPTIC ASSEMBLY			
THIRD ANGLE PROJECTION 		GENERAL TOLERANCES UNLESS OTHERWISE STATED		CARCLO Optics CONFIDENTIAL: UNAUTHORISED COPYING, DISCUSSION & DISTRIBUTION PROHIBITED		DIMENSION IN mm Format Size A3	
Drawn by M Wells		Customer CARCLO		Scale 2:1		Part N° 60159	
CAD File 60159 Rev3 Tri-Extruded Assy		Project N° P00880					

REVISIONS			
REV.	ECN No	DESCRIPTION	DATE
3	1626	WAS SHT.2, FLEXTAPE INSERT 60219 ADDED M.WELLS	30/09/2024

TRI-EXTRUDED OPTIC GENERAL ASSEMBLY



GENERAL ASSEMBLY INSTRUCTION:

- 1 - SELECT LED MODULE OPTION TO USE, SEE SHT.2. OPTIONAL INSERT MAYBE REQUIRED TO SUPPORT LED STRIPS.
- 2A - 20mm LED PCB; INSERT 60155 REQUIRES CUT-OUTS TO CLEAR LED PCB BACK CONNECTORS & MODIFICATIONS TO SUIT ENDCAP SCREW LENGTH (5mm MIN EACH END) & CABLE ANCHOR METHOD USED. BOND PCB TO INSERT.
- 2B - 8-12mm FLEXTAPE; INSERT 60219 REQUIRES MODIFICATIONS TO SUIT ENDCAP SCREW LENGTH (5mm MIN EACH END) & CABLE ANCHOR METHOD USED. ADHERE LED FLEXTAPE TO INSERT USING GUIDE RAILS TO EASE FITTING.
- 3 - PREPARE THREADS IN HOUSING FOR ENDCAP SCREWS (DEPENDANT ON SCREW TYPE USED)
- 4 - WHERE IP65 REQUIRED, FIT ADHESIVE INGRESS PROTECTIVE VENTS INTERNAL TO EACH ENDCAP RECESS.
- 5 - FIT OPTIC FROM TOP OF HOUSING, POSITION TO ENSURE EQUALLY SPACED INSET FROM EACH END OF HOUSING (SEE SHT.1) AND FIRMLY PRESS ALONG OPTIC TO CLIP IN PLACE.
- 6 - FIT GASKET SEAL TO NON-CABLE END OF HOUSING, SEATING EVENLY AND FIT ENDCAP BLANK OVER GASKET. FIT AND TIGHTEN 2x ENDCAP SCREWS 0.4Nm MAX SO ENDCAP FIRMLY SEATED TO HOUSING END.
- 7 - PREPARE LED MODULE SUPPLY CABLE FOR CONNECTION. FIT ENDCAP CABLE ENTRY & GASKET SEAL OVER CABLE END AND MAKE CONNECTIONS TO LED MODULE.
- 8 - SLIDE LED MODULE PLUS OPTIONAL INSERT INTO HOUSING OPEN END, ENSURE CORRECT POSITION.
- 9 - POSITION GASKET SEAL TO CABLE ENTRY END OF HOUSING, SEATING EVENLY AND ENDCAP CABLE ENTRY OVER CABLE AND GASKET. FIT AND TIGHTEN 2x ENDCAP SCREWS 0.4Nm MAX SO ENDCAP FIRMLY SEATED TO HOUSING END.

FOR OPTIC DETAILS SEE SEPARATE DRAWING

ITEM	ASSEMBLY KITS PACK x 5 PART QTY					PART No.	PART DESCRIPTION	MATERIAL	COLOUR
	60180	60214	60215	60216	60179				
1	-	-	-	-	5	60152	EXTRUDED OPTIC WALL GRAZER	PC	CLEAR
	5	-	-	-	-	60153	EXTRUDED OPTIC WALL WASHER	PC	CLEAR
	-	5	-	-	-	60165	EXTRUDED OPTIC NARROW BEAM	PMMA	CLEAR
	-	-	5	-	-	60166	EXTRUDED OPTIC MEDIUM BEAM	PMMA	CLEAR
	-	-	-	5	-	60167	EXTRUDED OPTIC WIDE BEAM	PMMA	CLEAR
2	5	5	5	5	5	60154	EXTRUDED HOUSING	AL 6063	ANODISE CLR
3	5	5	5	5	5	60156	ENDCAP CABLE ENTRY	PC-ABS	L/GREY RAL7035
4	5	5	5	5	5	60157	ENDCAP BLANK	PC-ABS	L/GREY RAL7035
5	10	10	10	10	10	60158	GASKET SEAL	SILICONE RUBBER	NATURAL
6	OPTIONAL					60155	EXTRUDED HOUSING INSERT, 20mm LED PCB	AL 6063	ANODISE CLR
						60219	EXTRUDED HOUSING FLEX TAPE INSERT	AL 6063	ANODISE CLR

CUSTOMER DRAWING

SHEET 3 OF 3

 Unit 6-7 Faraday Road Rabans Lane Industrial Area, Aylesbury, HP19 8RY, UK. Tel: +44(0) 01753 575 011 sales@carclo-optics.com www.carclo-optics.com	Title		26mm TRI-EXTRUDED OPTIC ASSEMBLY			
	Drawn by	M Wells	Customer	CARCLO	Scale	1:1
THIRD ANGLE PROJECTION	GENERAL TOLERANCES UNLESS OTHERWISE STATED		DIMENSION IN mm		Format Size	A3
CARCLO Optics CONFIDENTIAL: UNAUTHORISED COPYING, DISCUSSION & DISTRIBUTION PROHIBITED		CAD File	60159 Rev3 Tri-Extruded Assy		Part N°	60159
		Project N°	P00880			