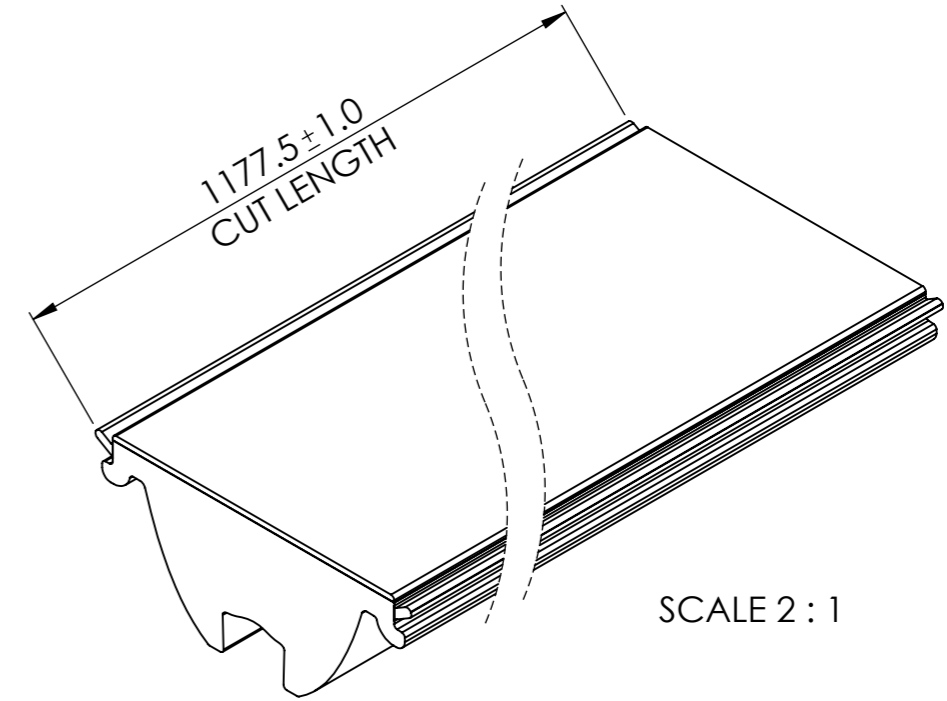
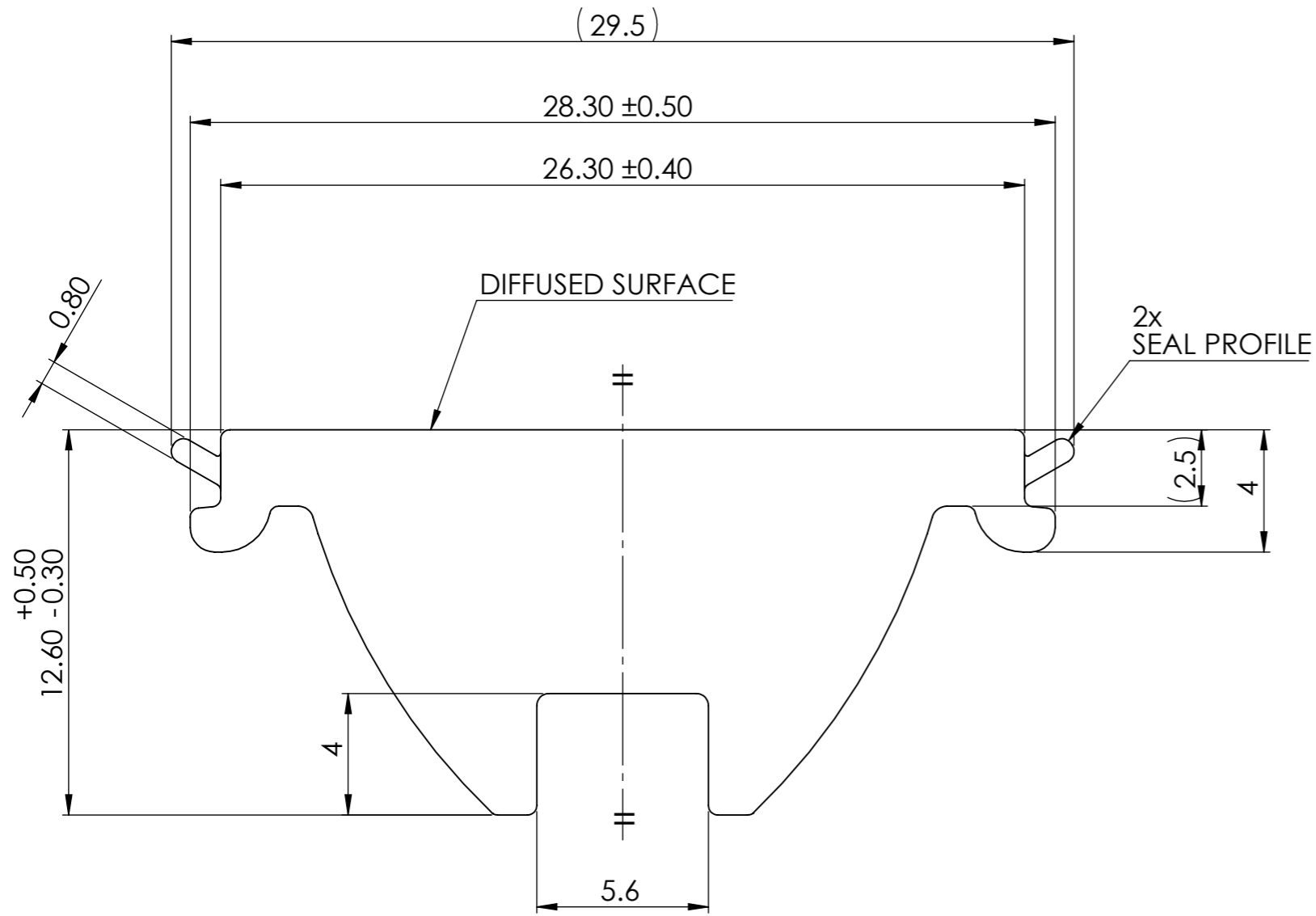


REVISIONS			
REV.	ECN No	DESCRIPTION	DATE
1		RELEASED PRODUCT M.WELLS	18/5/2022
2	1621	PIN LENS REPROFILE M.WELLS	16/02/2023
3	1624	MATERIAL GRADE UPDATED. S.SAFARALIEV	06/12/2023



NOTES:

- 1 - MATERIALS:
OPTIC BODY; PMMA, UV RESISTANT, UL 94 HB
SEAL PROFILE; PMMA, UV RESISTANT
- 2 - FINISH: OPTICAL SURFACES ARE OPTICALLY POLISHED.
- 3 - OVERALL PART SIZE, FORM & POSITION = SEE 2D CAD FILE.
- 4 - APPROX MASS 254.8 GRAMS/1000mm
- 5 - CRITICAL TO QUALITY DIMENSIONS (X.XX) ARE FOR INSPECTION
THEORETICALLY EXACT DIMENSIONS [X.XX] TO ISO 1101
AUXILIARY DIMENSIONS (X.XX) ARE FOR INFORMATION ONLY

CUSTOMER DRAWING

SHEET 2 OF 2

 Unit 6-7 Faraday Road Rabans Lane Industrial Area, Aylesbury, HP19 8RY, UK. Tel: +44(0) 01753 575 011 sales@carclo-optics.com www.carclo-optics.com	Title		TRI- EXTRUDED OPTIC, MEDIUM BEAM - 1200						
	Drawn by	M WELLS	Customer	CARCLO	Scale	5:1			
THIRD ANGLE PROJECTION	GENERAL TOLERANCES UNLESS OTHERWISE STATED DIN16941-2A		CARCLO Optics CONFIDENTIAL: UNAUTHORISED COPYING, DISCUSSION & DISTRIBUTION PROHIBITED		DIMENSION IN mm		Format Size	A3	
CAD File		60166 Rev3 MB0006 Optic			Part N°		60166	Project N°	P00895