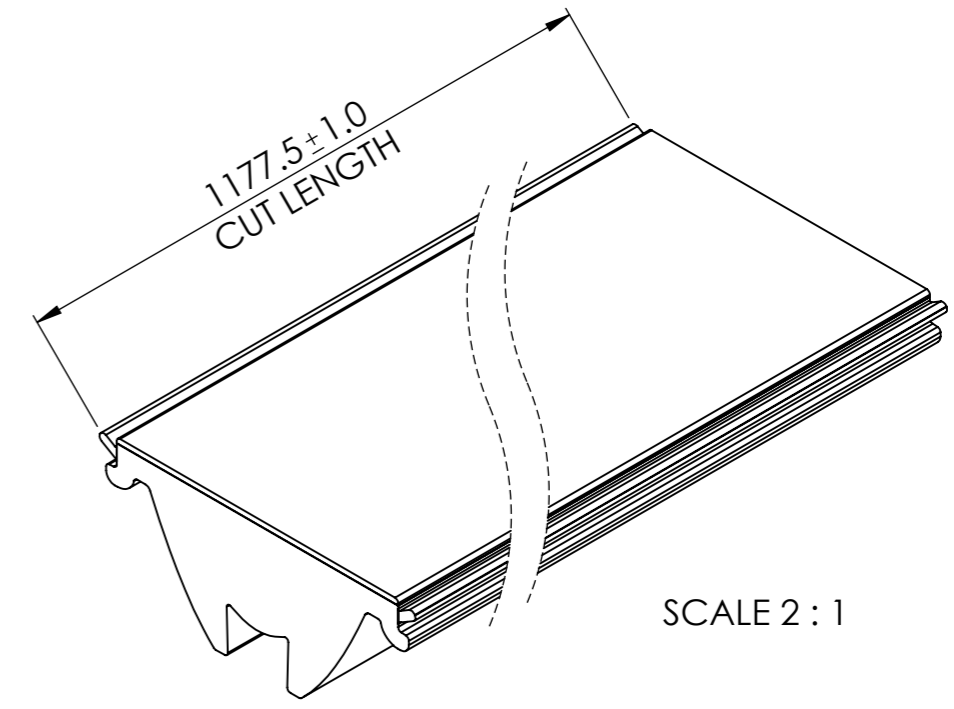
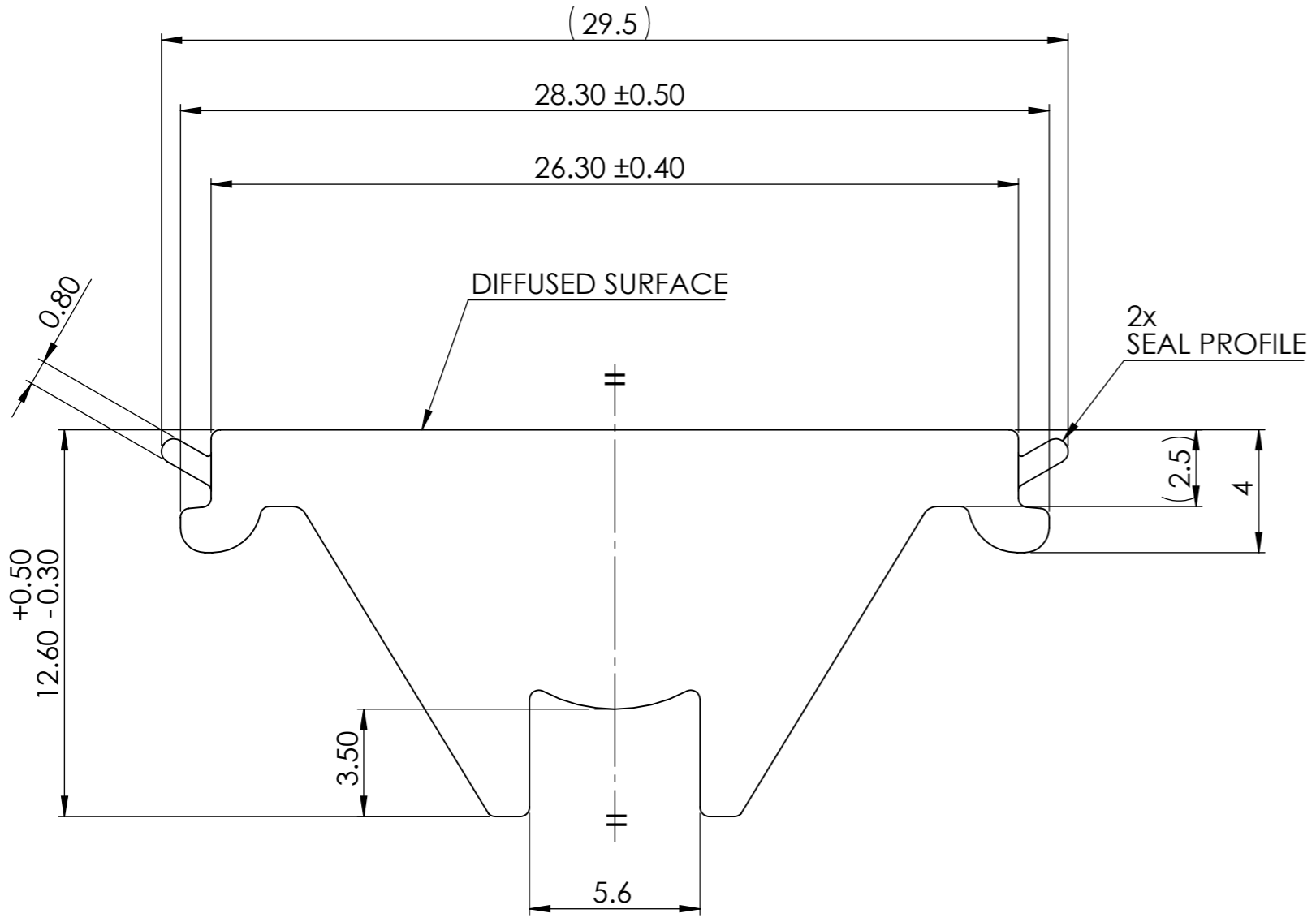


REVISIONS			
REV.	ECN No	DESCRIPTION	DATE
1		RELEASED PRODUCT M.WELLS	18/5/2022
2	1624	MATERIAL GRADE UPDATED. S.SAFARALIEV	06/12/2023



- NOTES:
- 1 - MATERIALS:
OPTIC BODY; PMMA, UV RESISTANT, UL 94 HB
SEAL PROFILE; PMMA, UV RESISTANT
 - 2 - FINISH: OPTICAL SURFACES ARE OPTICALLY POLISHED.
 - 3 - OVERALL PART SIZE, FORM & POSITION = SEE 2D CAD FILE.
 - 4 - APPROX MASS 242.8 GRAMS/1000mm
 - 5 - CRITICAL TO QUALITY DIMENSIONS (X.XX) ARE FOR INSPECTION
THEORETICALLY EXACT DIMENSIONS [X.XX] TO ISO 1101
AUXILIARY DIMENSIONS (X.XX) ARE FOR INFORMATION ONLY

CUSTOMER DRAWING

SHEET 2 OF 2

 Unit 6-7 Faraday Road Rabans Lane Industrial Area, Aylesbury, HP19 8RY, UK. Tel: +44(0) 01753 575 011 sales@carclo-optics.com www.carclo-optics.com	Title		TRI- EXTRUDED OPTIC, NARROW BEAM - 1200		
	Drawn by	M WELLS	Customer	CARCLO	Scale
 GENERAL TOLERANCES UNLESS OTHERWISE STATED DIN16941-2A	DIMENSION IN mm CAD File 60165 Rev2 NB0020 Optic		Format Size A3		Project N° P00895
	Part N° 60165		CONFIDENTIAL: UNAUTHORISED COPYING, DISCUSSION & DISTRIBUTION PROHIBITED		