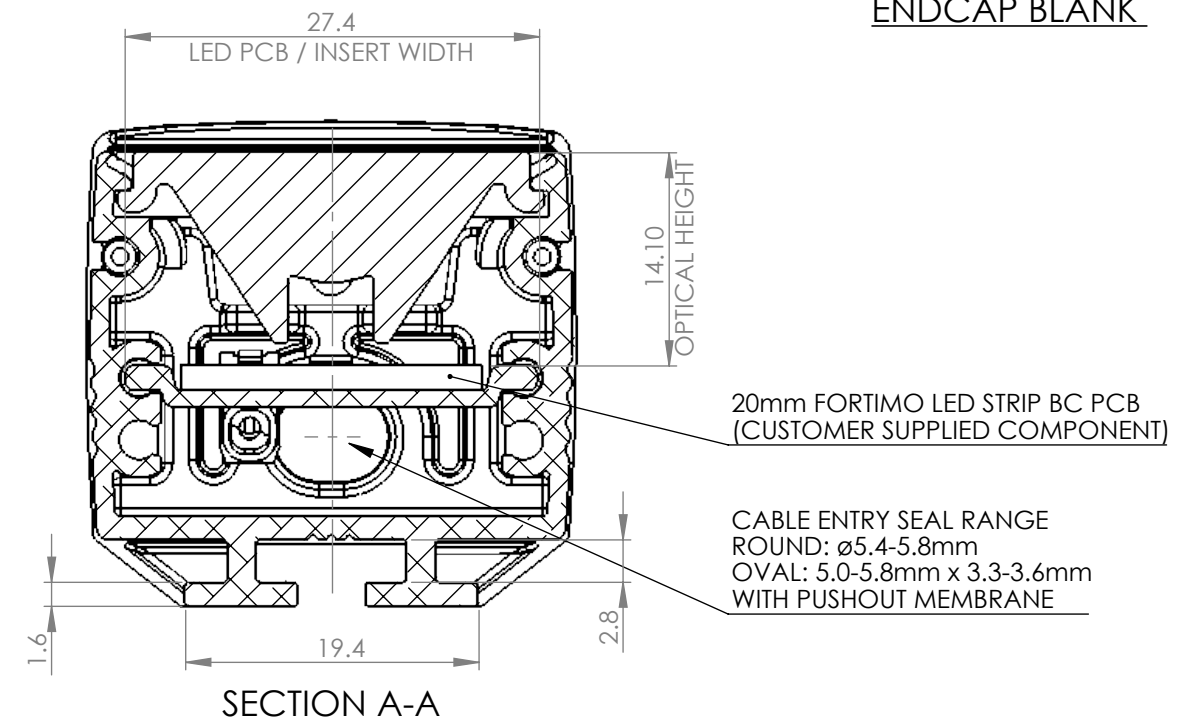
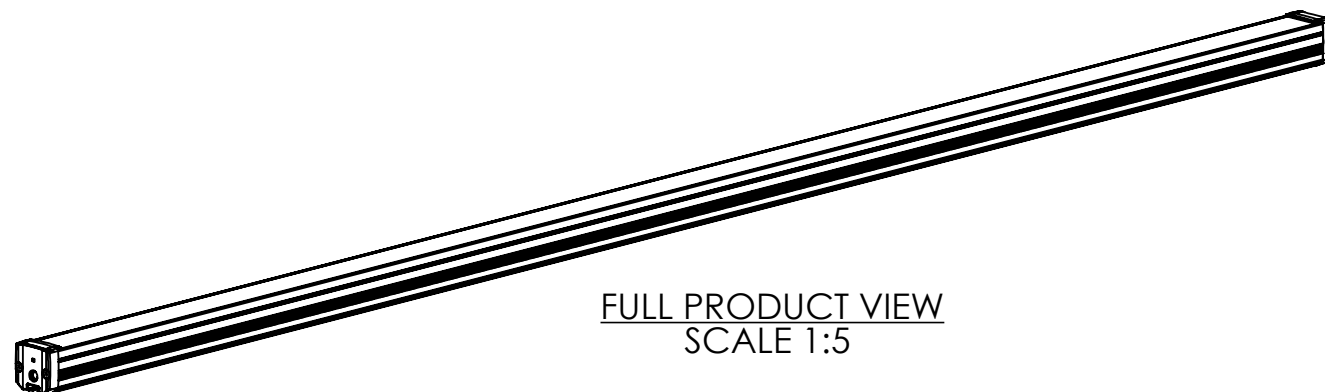
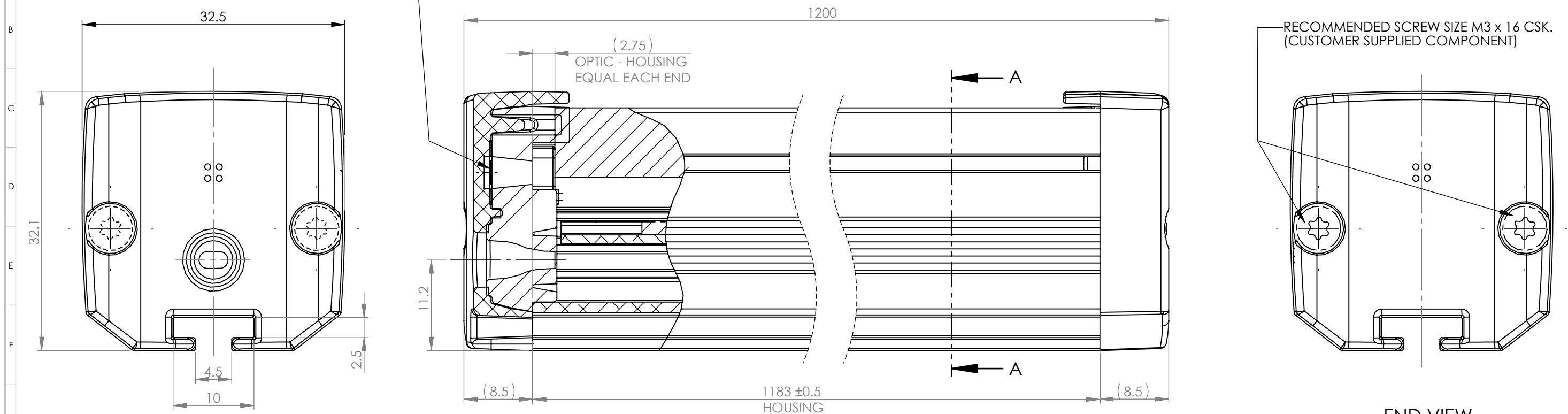


REVISIONS			
REV.	ECN No	DESCRIPTION	DATE
1		PRODUCT RELEASE M.WELLS	05/09/2022
2	1625	OPTICS 60165, 60166, 60167 ADDED, SEE SHEET 2. M.WELLS	19/02/2024





## CUSTOMER DRAWING

SHEET 1 OF 2

PRODUCT NOTES:

- 1 - MATERIALS: SEE TABLE SHEET 2
- 2 - FOR ALL OTHER DIMENSIONS SEE 3D CAD FILE.
- 3 - AUXILIARY DIMENSIONS (X.XX) ARE FOR INFORMATION ONLY

 <p>Unit 6-7 Faraday Road Rabans Lane Industrial Area, Aylesbury, HP19 8RY, UK. Tel: +44(0) 01753 575 011 sales@carclo-optics.com www.carclo-optics.com</p>		Title		26mm TRI-EXTRUDED OPTIC ASSEMBLY									
 <p>THIRD ANGLE PROJECTION</p>		<p>Drawn by</p>		<p>M Wells</p>		<p>Customer</p>		<p>CARCLO</p>		<p>Scale</p>		<p>2:1</p>	
<p>GENERAL TOLERANCES UNLESS OTHERWISE STATED</p>		<p>CARCLO Optics</p> <p>CONFIDENTIAL: UNAUTHORISED COPYING, DISCUSSION &amp; DISTRIBUTION PROHIBITED</p>		<p>DIMENSION IN mm</p>				<p>Format Size</p>		<p>A3</p>			
				<p>CAD File</p>		<p>60159 Rev2 Tri-Extruded Assy</p>							
				<p>Drg No</p>		<p>60159</p>				<p>Project N°</p>		<p>P00880</p>	



OPTION FOR 20mm LED STRIP PCB WITH INSERT

CABLE ENTRY  
ENDCAP VIEW

CUSTOMER SUPPLIED  
COMPONENTS

BLANK ENDCAP VIEW

CUSTOMER SUPPLIED  
COMPONENTS

OPTION FOR 27mm CUSTOM LED PCB

CUSTOMER SUPPLIED  
COMPONENTS

ASSEMBLY KITS					
PACK x 5 PART QTY					
ITEM	60179	60180	60214	60215	60216
1	5	-	-	-	-
	-	5	-	-	-
	-	-	5	-	-
	-	-	-	5	-
	-	-	-	-	5
2	5	5	5	5	5
3	5	5	5	5	5
4	5	5	5	5	5
5	5	5	5	5	5
6	10	10	10	10	10

PART No.	PART DESCRIPTION	MATERIAL	COLOUR
60152	EXTRUDED OPTIC WALL GRAZER	PC	CLEAR
60153	EXTRUDED OPTIC WALL WASHER	PC	CLEAR
60165	EXTRUDED OPTIC NARROW BEAM	PMMA	CLEAR
60166	EXTRUDED OPTIC MEDIUM BEAM	PMMA	CLEAR
60167	EXTRUDED OPTIC WIDE BEAM	PMMA	CLEAR
60154	EXTRUDED HOUSING	AL 6063	ANODISE CLR
60155	EXTRUDED HOUSING INSERT (OPTIONAL)	AL 6063	ANODISE CLR
60156	ENDCAP CABLE ENTRY	PC-ABS	L/GREY RAL7035
60157	ENDCAP BLANK	PC-ABS	L/GREY RAL7035
60158	GASKET SEAL	SILICONE RUBBER	NATURAL

FOR OPTIC DETAILS SEE SEPERATE DRAWING

ASSEMBLY INSTRUCTION:

1 - (20mm LED PCB) INSERT 60155 REQUIRES CUT-OUTS TO CLEAR LED PCB BACK CONNECTORS & MODIFICATIONS TO SUIT ENDCAP SCREW LENGTH & CABLE ANCHOR METHOD USED. BOND PCB TO INSERT.

2 - PREPARE THREADS IN HOUSING FOR ENDCAP SCREWS (DEPENDANT ON SCREW TYPE USED)

3 - WHERE IP65 REQUIRED, FIT ADHESIVE INGRESS PROTECTIVE VENTS FOR LIGHTING INTERNAL TO EACH ENDCAP RECESS.

4 - FIT OPTIC FROM TOP OF HOUSING, POSITION TO ENSURE EQUALLY SPACED FROM ENDS OF HOUSING AND FIRMLY PRESS ALONG OPTIC TO CLIP IN PLACE.

5 - FIT GASKET SEAL TO NON-CABLE END OF HOUSING, SEATING EVENLY AND FIT ENDCAP BLANK OVER GASKET. FIT AND TIGHTEN 2x ENDCAP SCREWS 0.4Nm MAX SO ENDCAP FIRMLY SEATED TO HOUSING END.

6 - SLIDE IN LED PCB FROM OPEN END.

7 - FIT GASKET SEAL OVER CABLE ENTRY END OF HOUSING, SEATING EVENLY AND FIT ENDCAP CABLE ENTRY OVER CABLE AND GASKET. FIT AND TIGHTEN 2x ENDCAP SCREWS 0.4Nm MAX SO ENDCAP FIRMLY SEATED TO HOUSING END.

CUSTOMER DRAWING

carclo  
Optics

Unit 6-7 Faraday Road  
Robans Lane Industrial Area,  
Aylesbury, HP19 8RY, UK.  
Tel: +44(0) 01753 575 011  
sales@carclo-optics.com www.carclo-optics.com

THIRD ANGLE  
PROJECTION

GENERAL TOLERANCES  
UNLESS OTHERWISE  
STATED

CARCLO Optics  
CONFIDENTIAL:  
UNAUTHORISED COPYING,  
DISCUSSION & DISTRIBUTION  
PROHIBITED

DIMENSION IN mm

Format Size

A3

Title

26mm TRI-EXTRUDED OPTIC ASSEMBLY

Drawn by

M Wells

Customer

CARCLO

Scale

1:1

Drg No.

60159

Project N°

P00880