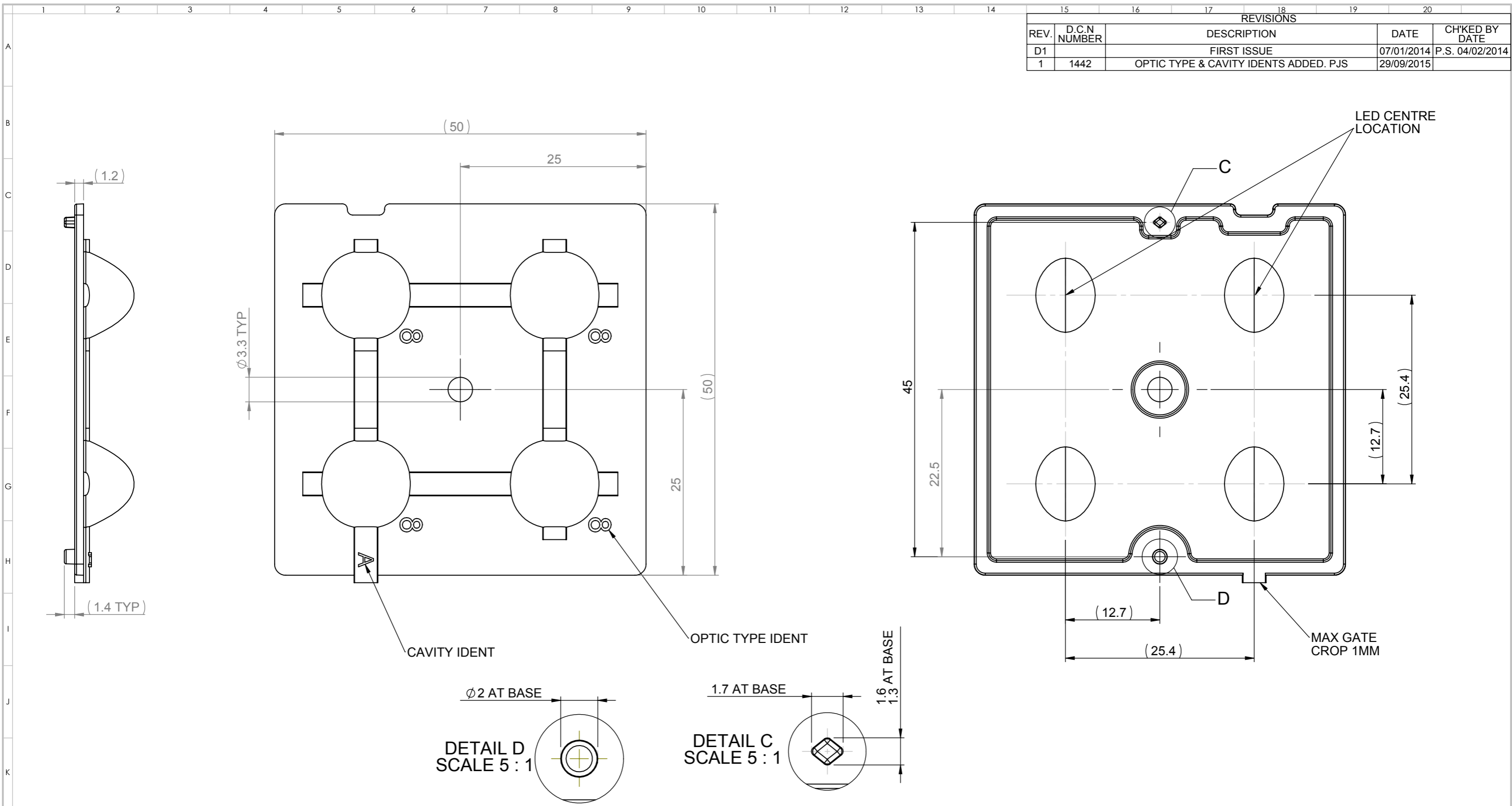


REVISIONS				
REV.	D.C.N NUMBER	DESCRIPTION	DATE	CHK'D BY DATE
D1		FIRST ISSUE	07/01/2014	P.S. 04/02/2014
1	1442	OPTIC TYPE & CAVITY IDENTS ADDED. PJS	29/09/2015	



- NOTES:
- 1 - MATERIAL: PMMA
  - 2 - FINISH: OPTICAL SURFACES ARE OPTICALLY POLISHED COMMERCIAL POLISH FOR ALL NON OPTICAL SURFACES.
  - 3 - GENERAL DRAFT 2°
  - 4 - GENERAL FILLET 0.25MM
  - 5 - DIMENSION IN BRACKETS ARE FOR INFORMATION ONLY AND NOT FOR INSPECTION

# CUSTOMER DRAWING

SHEET 2 OF 2

<p>103 Buckingham Avenue SL1 4PF, UK. Tel: +44(0) 01753 375 011 Fax: +44(0) 01753 811 359 sales@carclo-optics.com www.carclo-optics.com</p>	Title		MINI HUBBLE TYPE 8 - QUAD				
	Drawn by	DG	Customer	CARCLO	Scale	AS SPEC	
<p>THIRD ANGLE PROJECTION</p>	GENERAL TOLERANCES UNLESS OTHERWISE STATED		DIMENSION IN mm		Format Size	A3	
	0	±0.25	0	±1°	CAD File	12818-70303_Rev_1	
0.0	±0.1	0.0	±0.5°	Part N°	12818	Drw N°	70303
0.00	±0.05	0.00	±0.1°	<p>CARCLO Optics CONFIDENTIAL: UNAUTHORISED COPYING, DISCUSSION &amp; DISTRIBUTION PROHIBITED</p>			