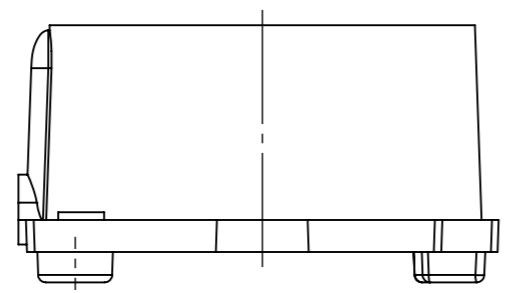
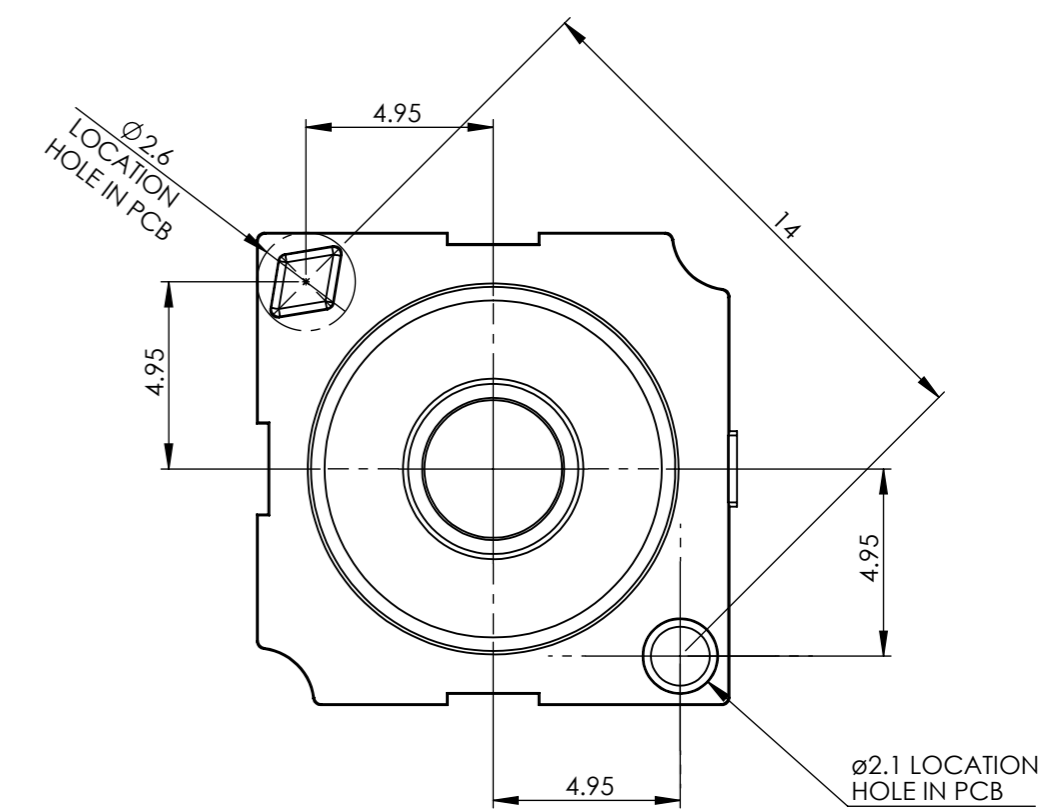
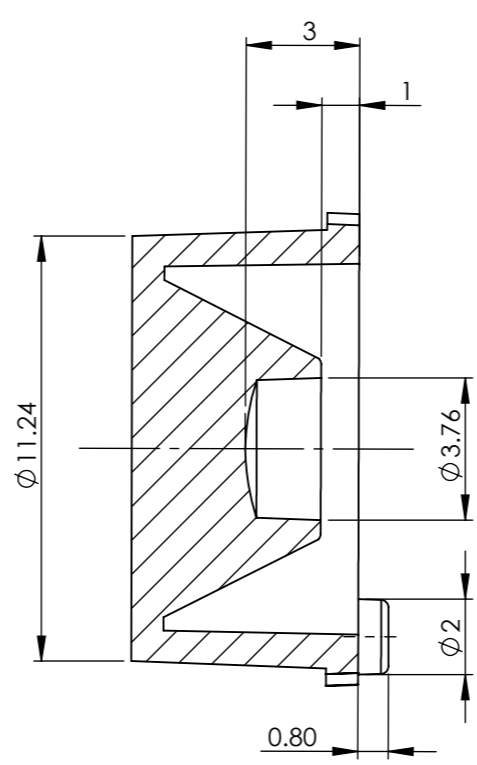
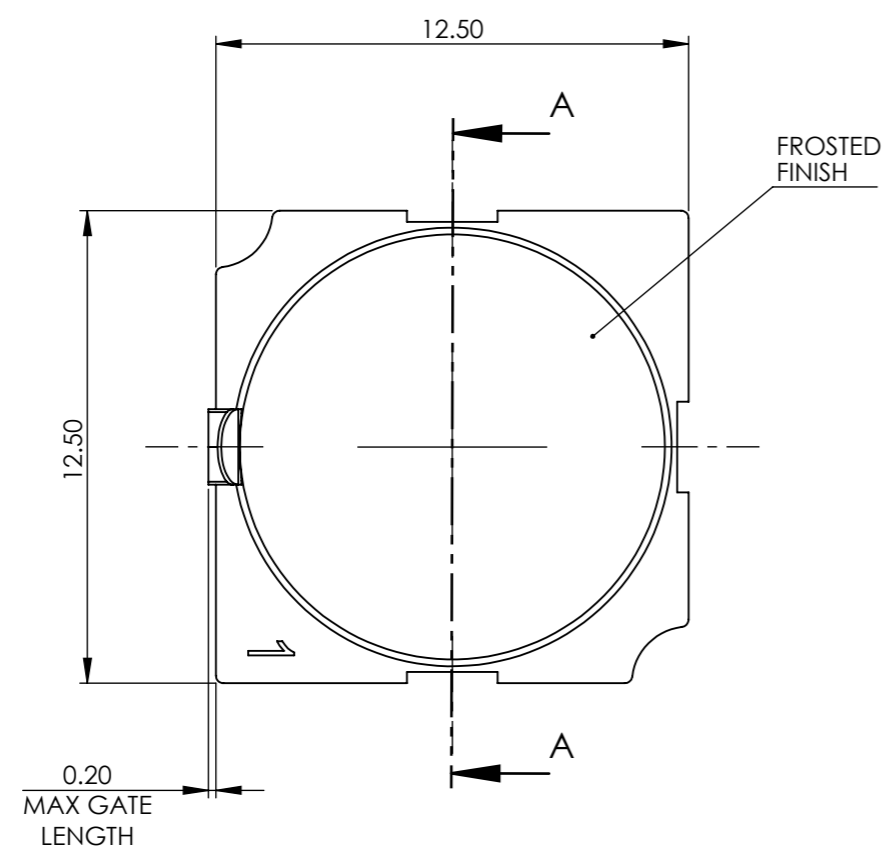
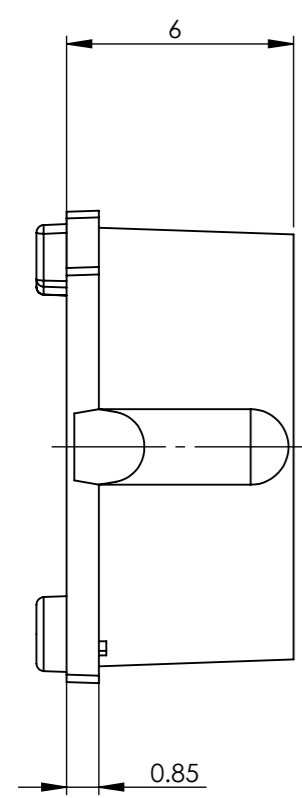
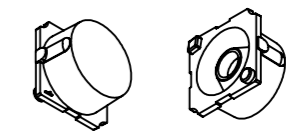


REVISIONS			
REV.	ECN No	DESCRIPTION	DATE
1		PRODUCT RELEASE M.WELLS	21/12/2022



PART VIEWS
SCALE 1:1



- NOTES:
- 1 - MATERIALS: POLYCARBONATE, UV-STABILISED
 - 2 - FINISH: ALL OPTIC SURFACES ARE OPTICALLY POLISHED. FRONT FACE FROSTED
 - 3 - CRITICAL TO QUALITY DIMENSIONS (X.XX) ARE FOR INSPECTION
THEORETICALLY EXACT DIMENSIONS [X.XX] TO ISO 1101
AUXILIARY DIMENSIONS (X.XX) ARE FOR INFORMATION ONLY

CUSTOMER DRAWING

SHEET 2 OF 2

 Unit 6-7 Faraday Road Rabans Lane Industrial Area, Aylesbury, HP19 8RY, UK. Tel: +44(0) 01753 575 011 sales@carclo-optics.com www.carclo-optics.com	Title		10mm OPTIC WIDE BEAM FROSTED, IP66					
	Drawn by	M.WELLS	Customer	CARCLO	Scale	5:1		
THIRD ANGLE PROJECTION	GENERAL TOLERANCES UNLESS OTHERWISE STATED DIN16742: TG5		CARCLO Optics CONFIDENTIAL: UNAUTHORISED COPYING, DISCUSSION & DISTRIBUTION PROHIBITED		DIMENSION IN mm		Format Size	A3
		CAD File	60168 Rev1 WB0035 Optic					
		Part N°	60168			Project N°	P01006	