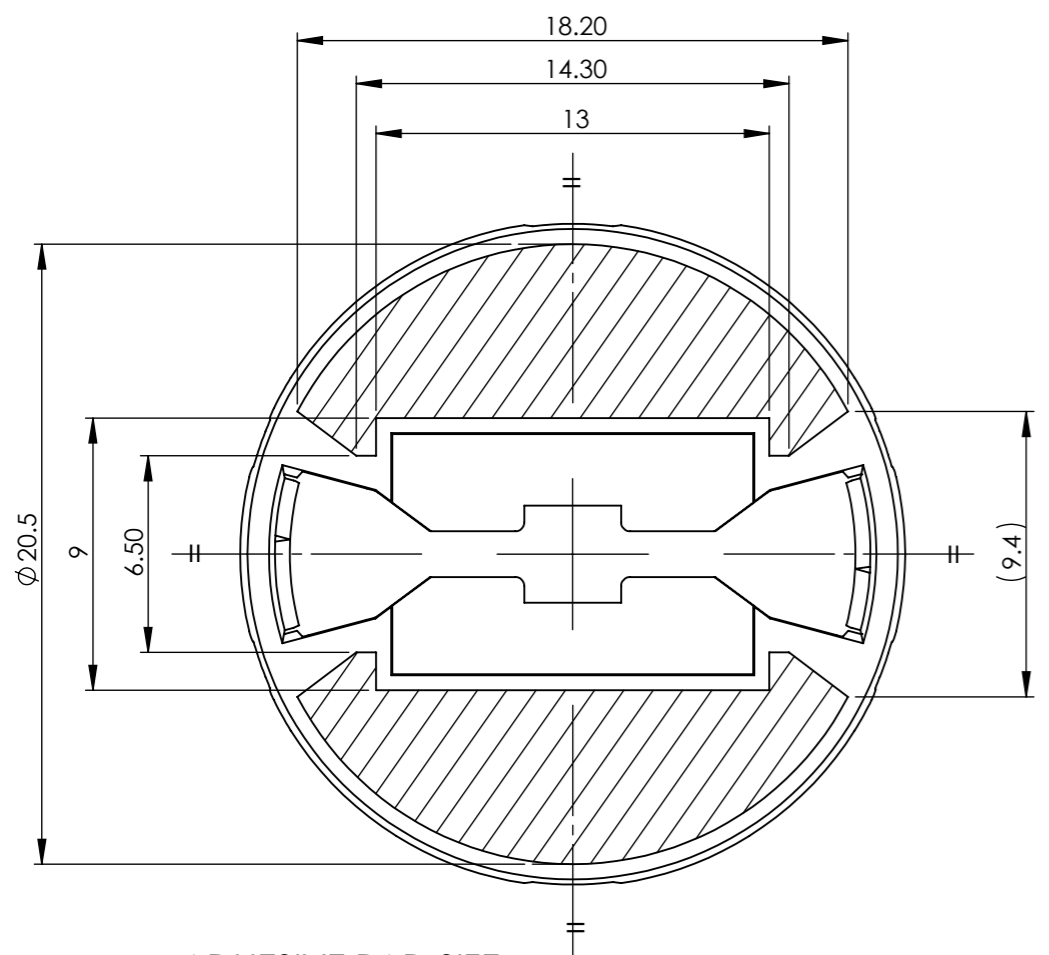
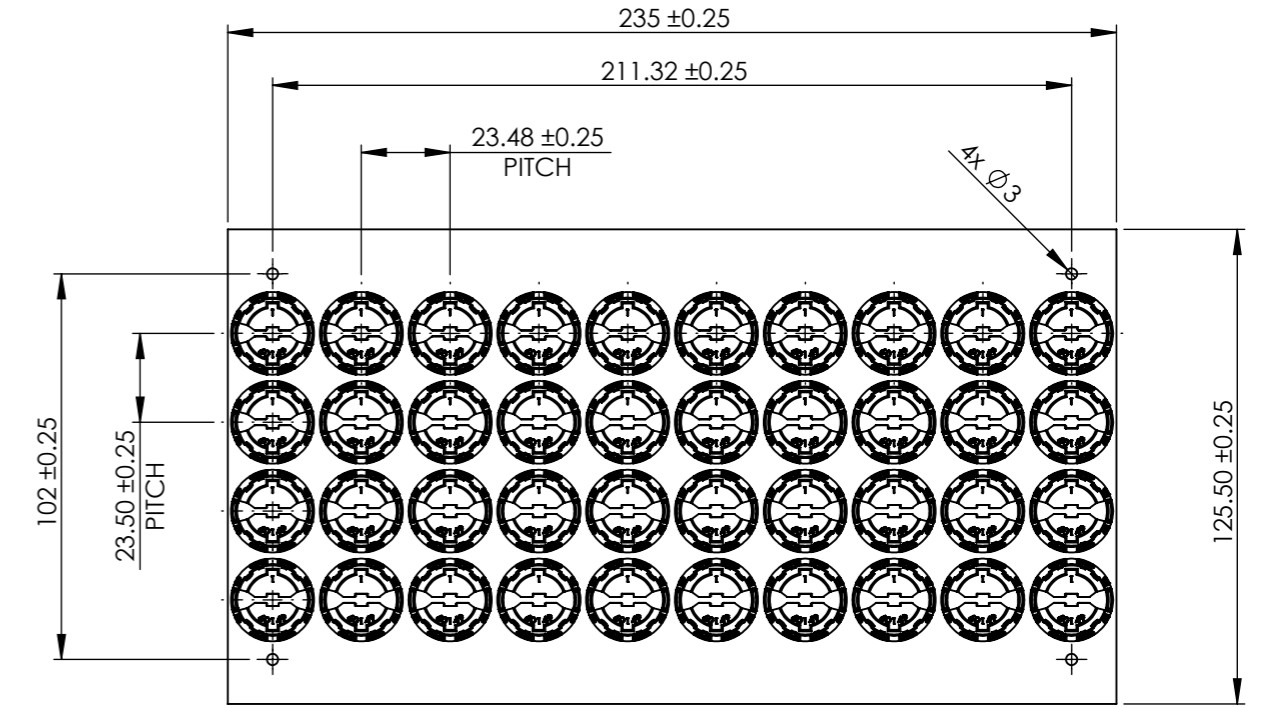


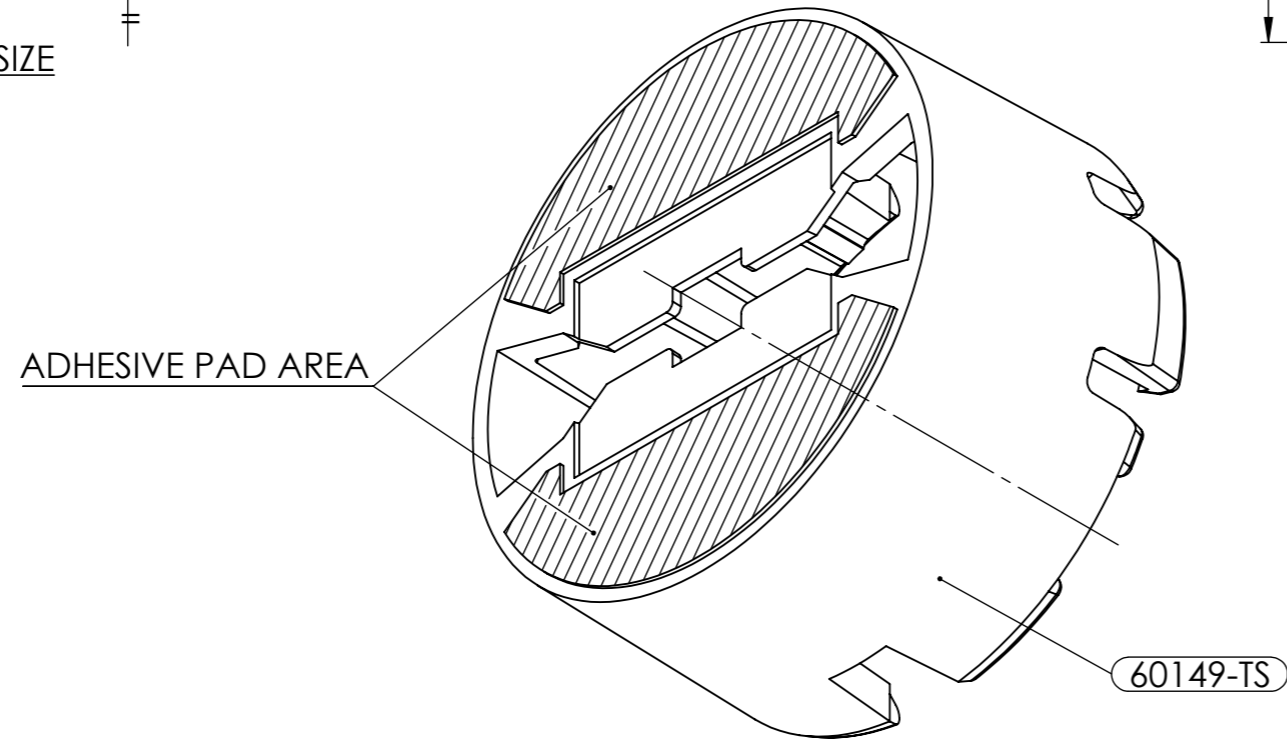
REVISIONS			
REV.	ECN No	DESCRIPTION	DATE
2		RELEASED TO PRODUCTION. M WELLS	11/03/2022



ADHESIVE PAD SIZE



HOLDER LAYOUT 4x10 ON ADHESIVE TAPED SHEET  
SCALE 1:2



ADHESIVE PAD AREA

NOTES:

- 1 - MATERIALS: ADHESIVE PAD SPEC, 3M 9495LE, 0.17mm THICK
- 2 - HOLDERS SUPPLIED IN 4x10 LAYOUT ON TAPED SHEETS
- 3 - GENERAL ADHESIVE PAD POSITION 0.2mm FROM HOLDER EDGE
- 4 - FOR ALL OTHER DIMENSIONS SEE 3D CAD FILE / HOLDER DRAWING 60149
- 5 - CRITICAL TO QUALITY DIMENSIONS (X.XX) ARE FOR INSPECTION  
THEORETICALLY EXACT DIMENSIONS [X.XX] TO ISO 1101  
AUXILIARY DIMENSIONS (X.XX) ARE FOR INFORMATION ONLY

SHEET 1 OF 1

 Unit 6-7 Faraday Road Rabans Lane Industrial Area, Aylesbury, HP19 8RY, UK. Tel: +44(0) 01753 575 011 sales@carclo-optics.com www.carclo-optics.com	Title		HOLDER OH11.2, ø20mm OPTIC (3.0 x 3.0mm LED) TAPED SHEET			
	Drawn by	M WELLS	Customer	CARCLO	Scale	4:1
THIRD ANGLE PROJECTION	GENERAL TOLERANCES UNLESS OTHERWISE STATED ISO 2768-m		DIMENSION IN mm		Format Size	A3
 CARCLO Optics CONFIDENTIAL: UNAUTHORISED COPYING, DISCUSSION & DISTRIBUTION PROHIBITED	CAD File		60149 Rev2 Holder		Part N°	60149-TS
	Project N°		P00882			