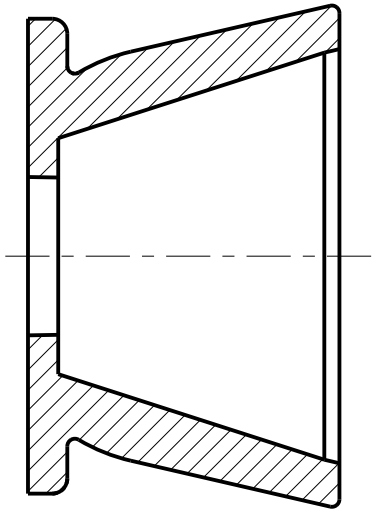


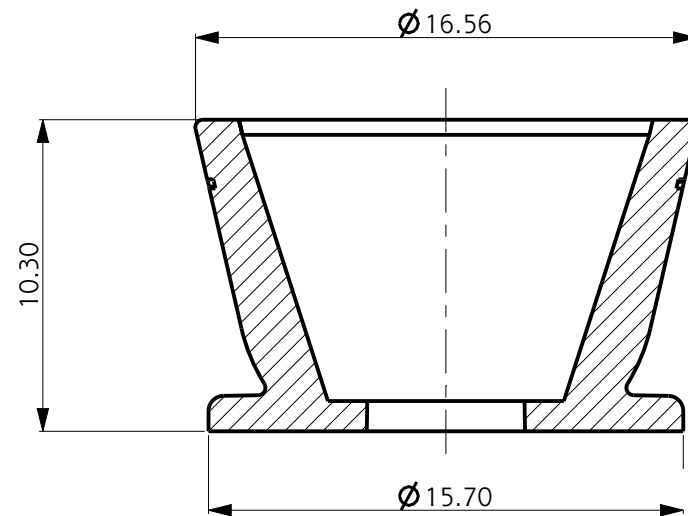
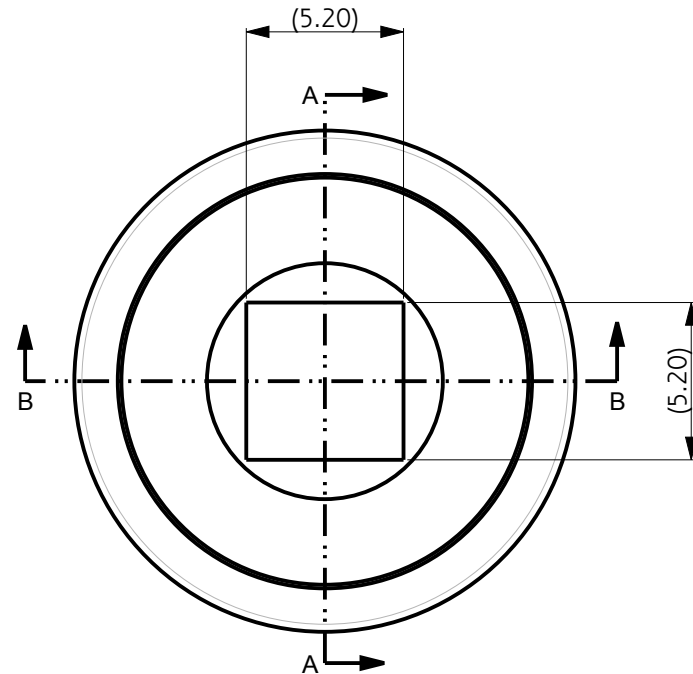
SCALE 1:1

# CUSTOMER DRAWING SHEET 2 ONLY

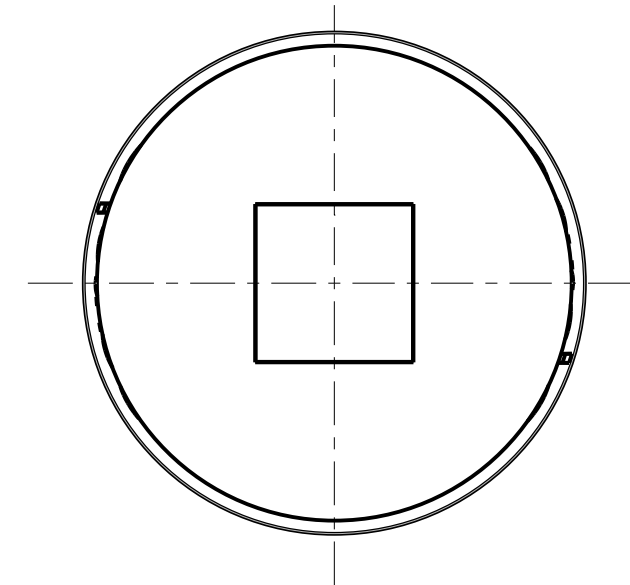
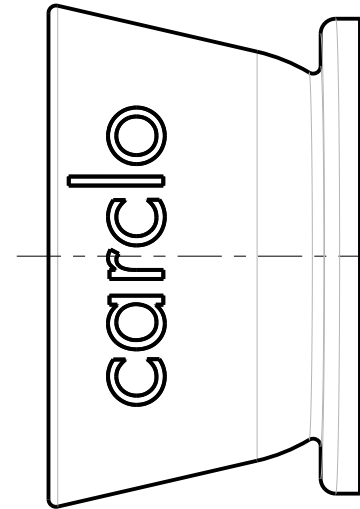
REV.	DATE	D.C.N. No	DESCRIPTION
1	13/01/12		FIRST ISSUE
1A	24/07/12	07/12/1341	ADDED SUBSTRATE TABLE AND TIDIED UP DRAWING
1B	19/01/16	1450 / 1458	TOLS UPDATED TO DIN16742:TG5. REDIMENSIONED FOR INSPECTION. ALT MTL ADDED. P.SUTTON



SECTION A-A



SECTION B-B



NOTES:

- 1 - MATERIAL: POLYCARBONATE
- 2 - FINISH: COMMERCIAL POLISH FOR ALL NON OPTICAL SURFACES
- 3 - OVERALL PART THICKNESS = 1.4mm
- 4 - COLOUR = CARCLO GREY / ALUMINIUM COATED
- 5 - GENERAL DRAFT 1°
- 6 - SIMPLIFIED GEOMETRY SHOWN. NOT SUITABLE FOR OPTICAL RAYTRACE

SCALE 4:1

Sheet 2 of 2

<p>technical plastics 103 BUCKINGHAM AVE, SLOUGH, BERKSHIRE, SL1 4PF, UK Tel: +44 1753 610800 Fax: +44 1753 811359 design@carclo-optics.com www.carclo-optics.com</p>	Title		ARCHIMEDES WIDE BEAM HIGHBAY REFLECTOR - SELF LOCATING			
	Customer		CARCLO			
Drawn by	FP	Material	SEE NOTE		Scale	AS SPEC.
THIRD ANGLE PROJECTION	GENERAL TOLERANCES UNLESS OTHERWISE STATED DIN16742:TG5		CONFIDENTIAL: UNAUTHORISED COPYING, DISCUSSION & DISTRIBUTION PROHIBITED		DIMENSIONS IN mm	
					Format Size	A3
	CAD File		12531-70030_REV-1B_ARCH80SL			
	Drw. N°		70030		Part N° 12531	