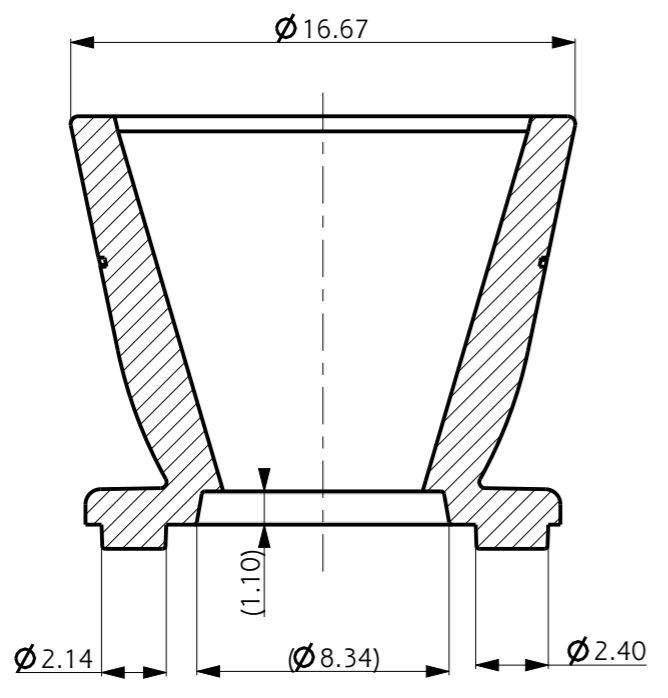
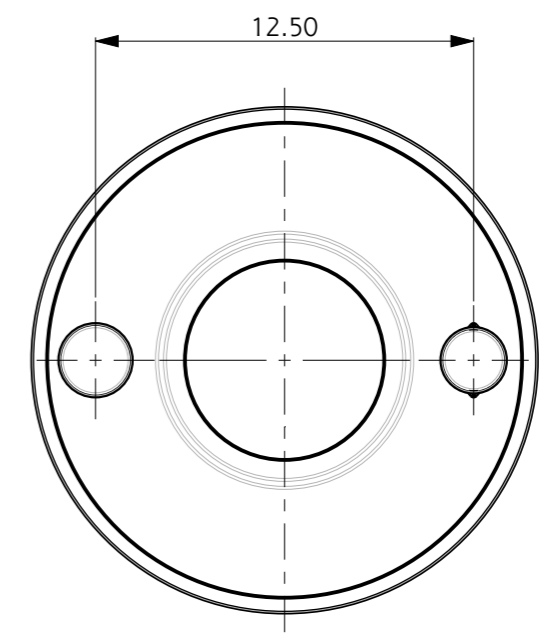
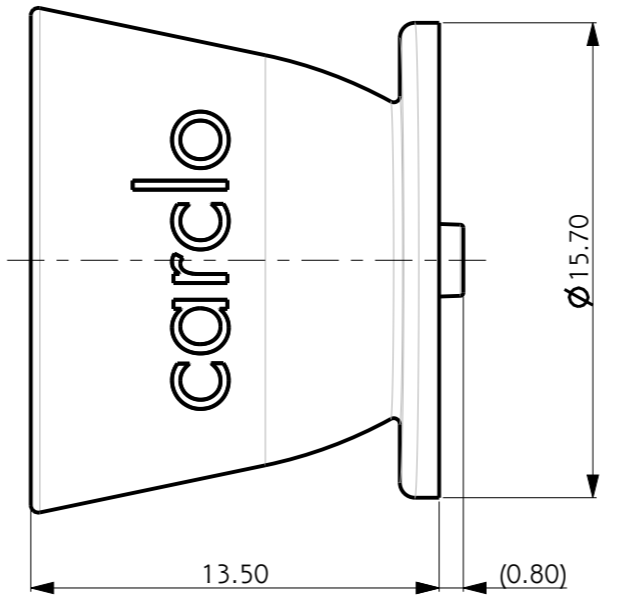
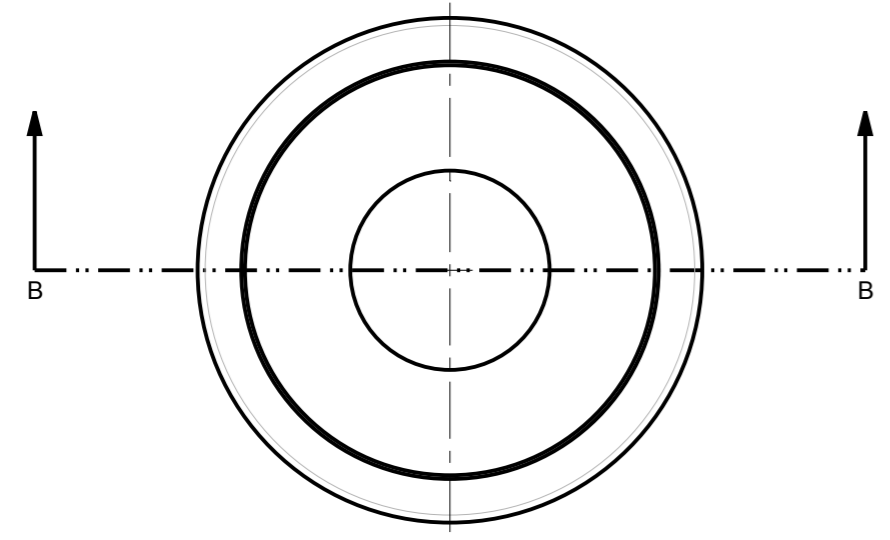


REV.	DATE	D.C.N. No	DESCRIPTION
1	13/01/12		FIRST ISSUE
2	21/06/12	06/12/1337	CHANGED SURFACE TEXTURE TO VDI 21-24 FROM VDI 30-33
2A	15/08/12	07/12/1342	ADDED SUBSTRATE TABLE & TIDIED UP DRAWING.
2B	18/01/16	1450 / 1458	TOLS UPDATED TO DIN16742:TG5. REDIMENSIONED FOR INSPECTION. ALT MTL ADDED. P.SUTTON

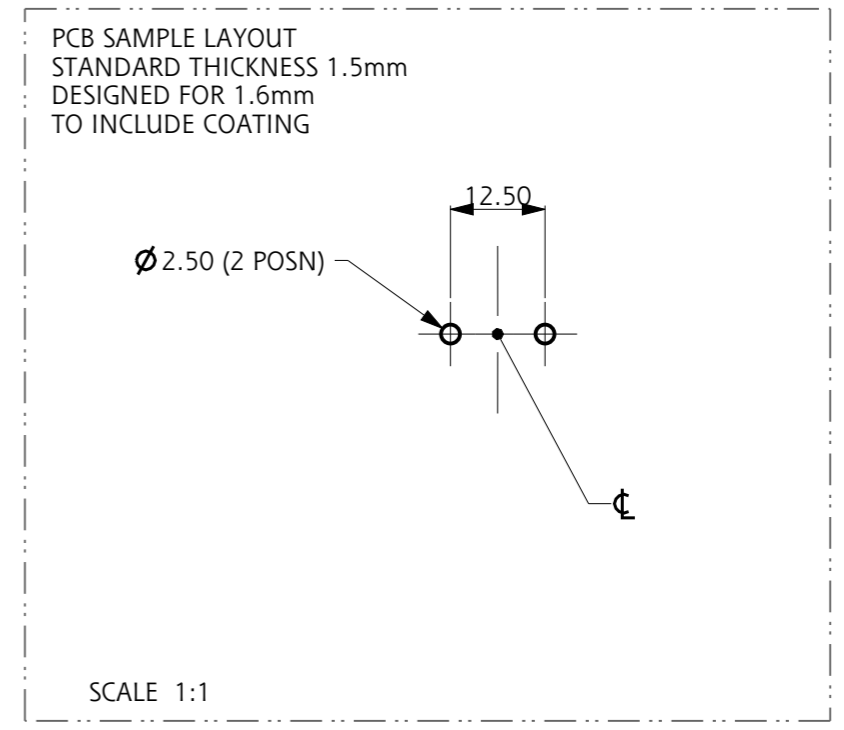
CUSTOMER DRAWING SHEET 2 ONLY



SCALE 1:1



SECTION B-B



- NOTES:
- 1 - MATERIAL: POLYCARBONATE
 - 2 - FINISH: COMMERCIAL POLISH FOR ALL NON OPTICAL SURFACES
 - 3 - OVERALL PART THICKNESS = 1.4mm
 - 4 - COLOUR = CARCLO GREY / ALUMINIUM COATED
 - 5 - GENERAL DRAFT 1°
 - 6 - SIMPLIFIED GEOMETRY SHOWN. NOT SUITABLE FOR OPTICAL RAYTRACE

SCALE 4:1

SCALE 1:1

<p>technical plastics 103 BUCKINGHAM AVE, SLOUGH, BERKSHIRE, SL1 4PF, UK Tel: +44 1753 610800 Fax: +44 1753 811359 design@carclo-optics.com www.carclo-optics.com</p>	Title		ARCHIMEDES MEDIUM BEAM HIGHBAY REFLECTOR - GLUE			
	Customer		CARCLO			
THIRD ANGLE PROJECTION	Drawn by	FP	Material	SEE NOTE	Scale	AS SPEC.
<p>GENERAL TOLERANCES UNLESS OTHERWISE STATED DIN16742:TG5</p>	DIMENSIONS IN mm			Format Size	A3	
	CAD File	12530-70029_REV-2B_REFL_60_GLUE		Drw. N°	70029	
<p>CONFIDENTIAL: UNAUTHORISED COPYING, DISCUSSION & DISTRIBUTION PROHIBITED</p>	Part N°	12530				