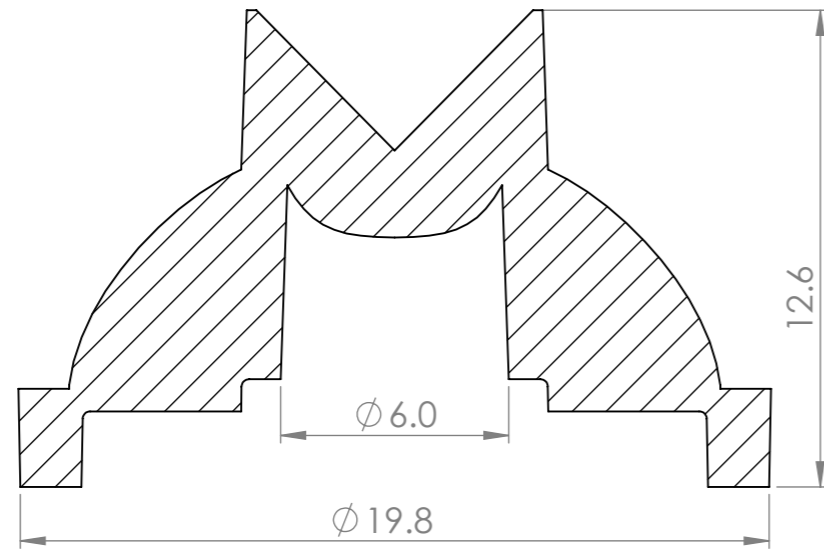
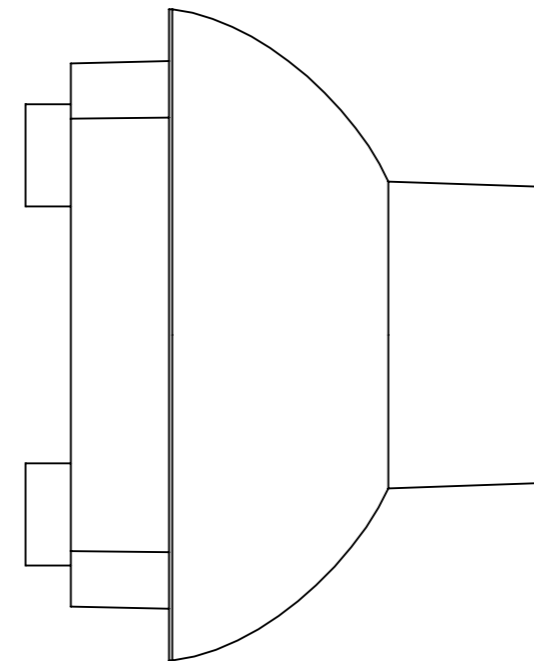
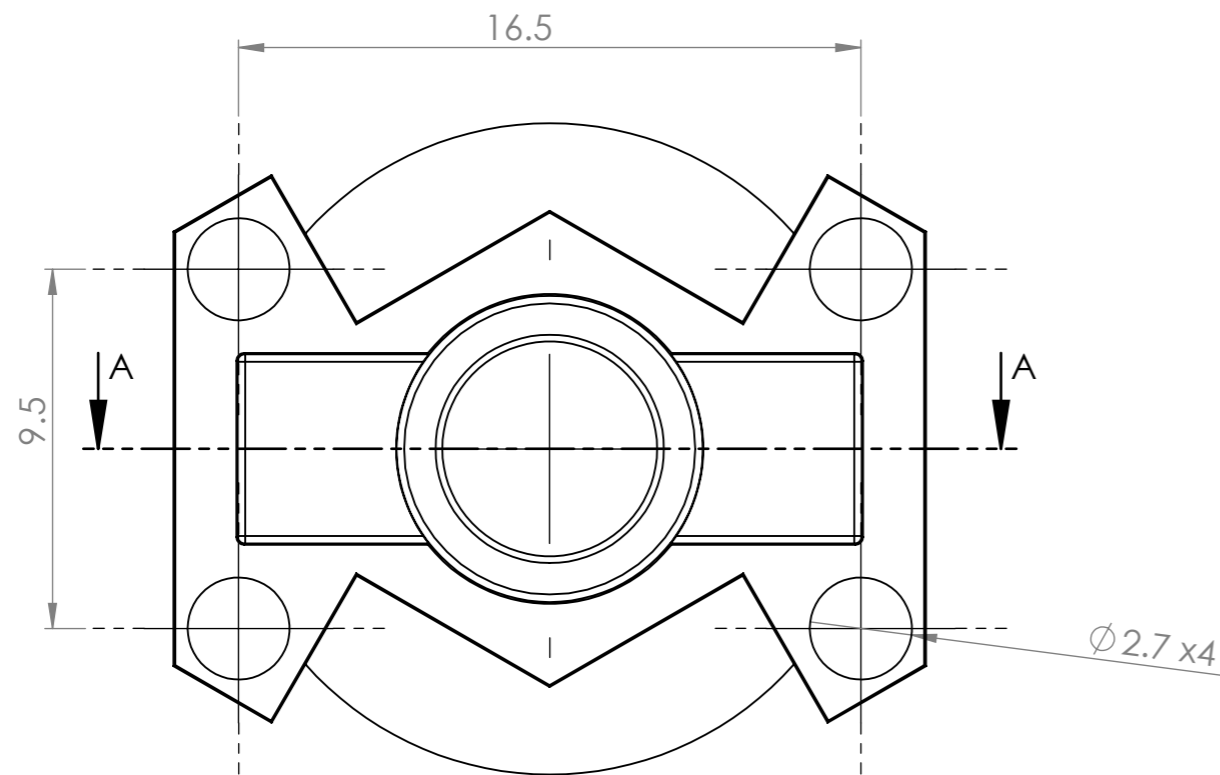
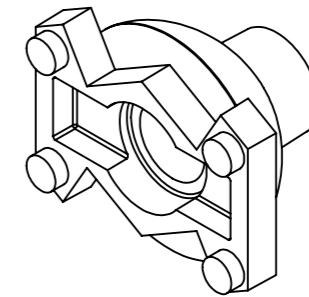


# CUSTOMER DRAWING

ISS.	DATE	E.C.N.	DESCRIPTION
1	24 MAR 04		FIRST ISSUE
2	28 MAY 04	05/4/1148	DRAFT MODIFICATIONS
3	18 OCT 04		PART NUMBER CHANGED TO 10071





SECTION A-A



## NOTES:

- 1 - MATERIAL: POLYCARBONATE
- 2 - FINISH:  
OPTICAL SURFACES ARE OPTICALLY POLISHED TO SPI-A1  
COMMERCIAL POLISH SP1-A3 FOR ALL NON OPTICAL SURFACES.
- 3 - OVERALL PART THICKNESS = SEE 3D FILE
- 4 - GENERAL DRAFT 2°
- 5 - GENERAL FILLET 0.25MM
- 6 - TRUE OPTICAL SURFACES ARE HIDDEN - NOT SUITABLE FOR RAY TRACING

SHEET 1 OF 1

 Unit 6-7 Faraday Road Rabans Lane Industrial Area, Aylesbury, HP19 8RY, UK. Tel: +44(0) 01753 575 011 sales@carclo-optics.com www.carclo-optics.com		Title		LED OPTIC SIDE EMITTER 1W		
		Drawn by	AC	Customer		Scale
THIRD ANGLE PROJECTION	GENERAL TOLERANCES UNLESS OTHERWISE STATED		DIMENSION IN mm		Format Size	A3
	LINEAR	ANGULAR	CAD File	10071_60364_sideEmitterModified		
	0 ±0.25 0.0 ±0.1 0.00 ±0.05	0 ±1° 0.0 ±0.5° 0.00 ±0.1°	Part N°	10071	RFQ N°	
CARCLO Optics CONFIDENTIAL: UNAUTHORISED COPYING, DISCUSSION & DISTRIBUTION PROHIBITED						