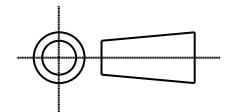


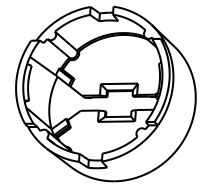
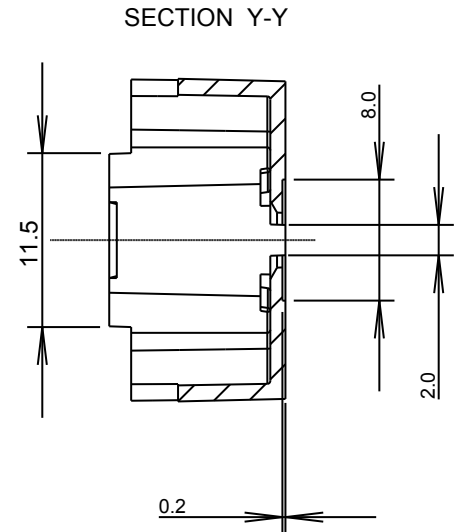
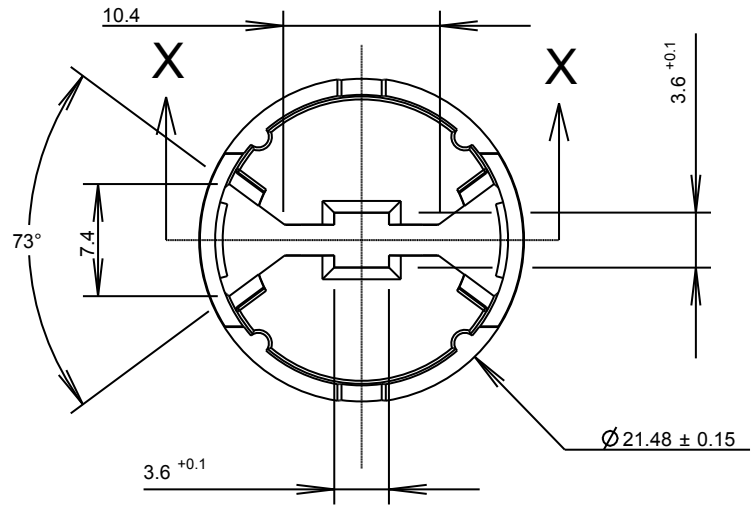
| | | | |
|------|-----------|--------|-------------|
| ISS. | DATE | E.C.N. | DESCRIPTION |
| 1 | 14-Oct-08 | | FIRST ISSUE |

© 2008 CARCLO
ALL DIMENSIONS IN mm

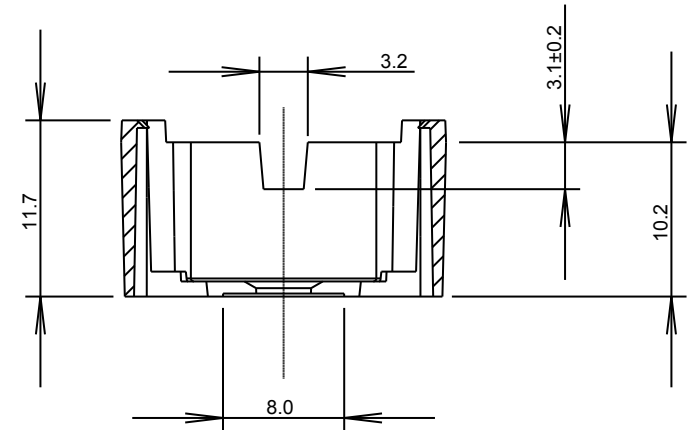


CARCLO TECHNICAL PLASTICS (SLOUGH)
111 BUCKINGHAM AVE, SLOUGH
SL1 4PF, ENGLAND
TEL: +44 1753 575011 FAX: +44 1753 811359
e-mail: design@carclo-optics.com}

CUSTOMER DRAWING



3D GENERAL VIEW
SCALE 1:1



SECTION X-X

NOTES:
1. MATERIAL: POLYCARBONATE
2. GENERAL WALL THICKNESS 1mm

| PART No. | DESCRIPTION |
|----------|-------------|
| 10566 | BLACK |
| 10567 | WHITE |
| 10568 | CLEAR |

GENERAL TOLERANCES (UNLESS STATED)

| LINEAR | ANGULAR |
|---------------|---------------|
| X +/- 0.25 | X +/- 1° |
| X.X +/- 0.1 | X.X +/- 0.5° |
| X.XX +/- 0.05 | X.XX +/- 0.1° |

| | | |
|--|-----------------|--------|
| CUSTOMER | | |
| CARCLO | | |
| TITLE | | |
| 20MM DIA LED OPTIC HOLDER FOR 3.5 x 3.5MM LEDS | | |
| DRAWN | DATE | |
| AJD | 14-Oct-08 | |
| CHK'D | DATE | |
| APP'D | DATE | |
| SCALE | CARCLO PART No. | |
| 2:1 | SEE TABLE | |
| SIZE | CARCLO DRG. No. | SHEET |
| A4 | 60544 | 1 OF 1 |